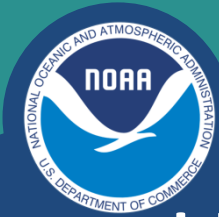


Science, Service, Stewardship



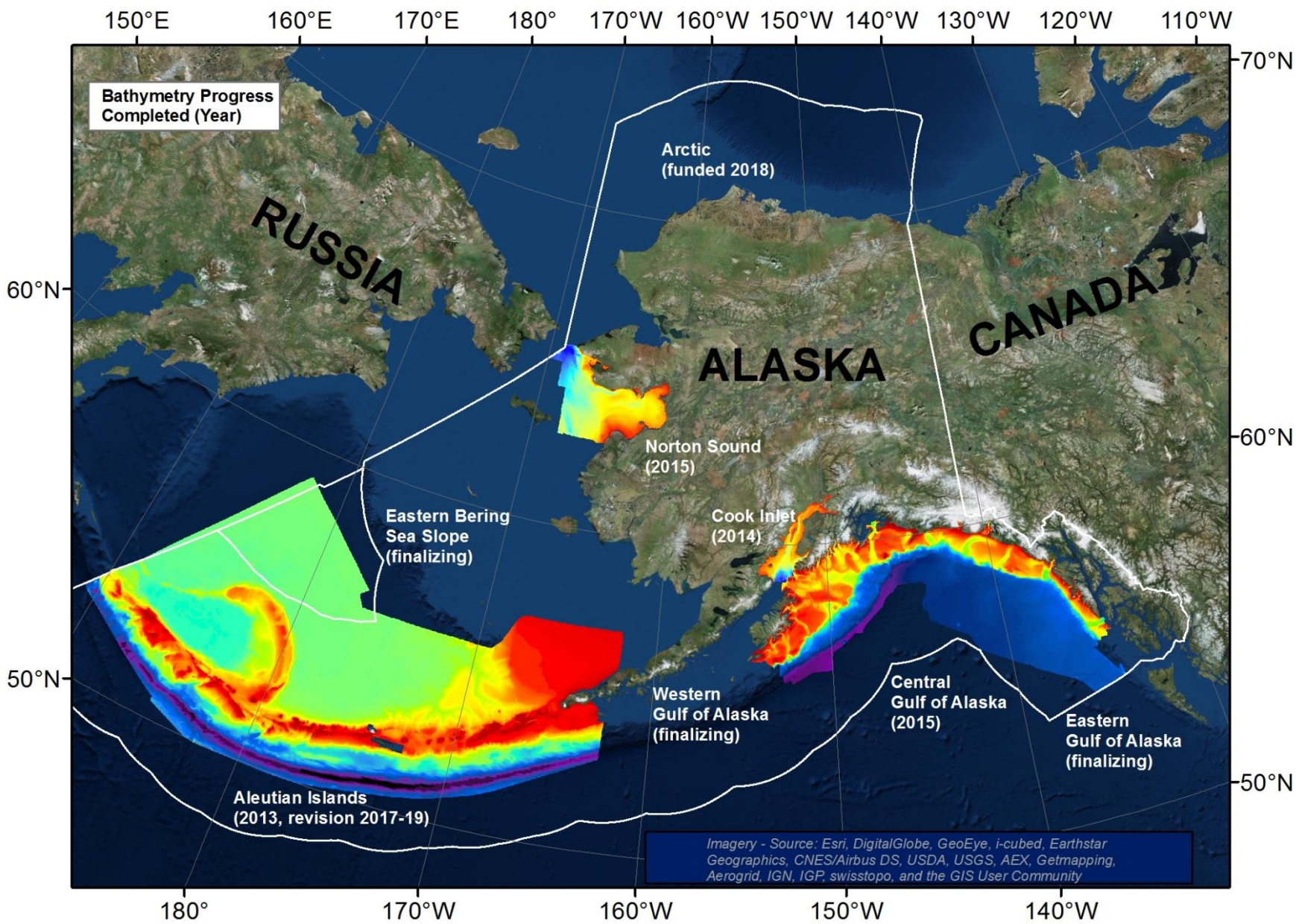
Update on Alaska bathymetry: products for improving fisheries management

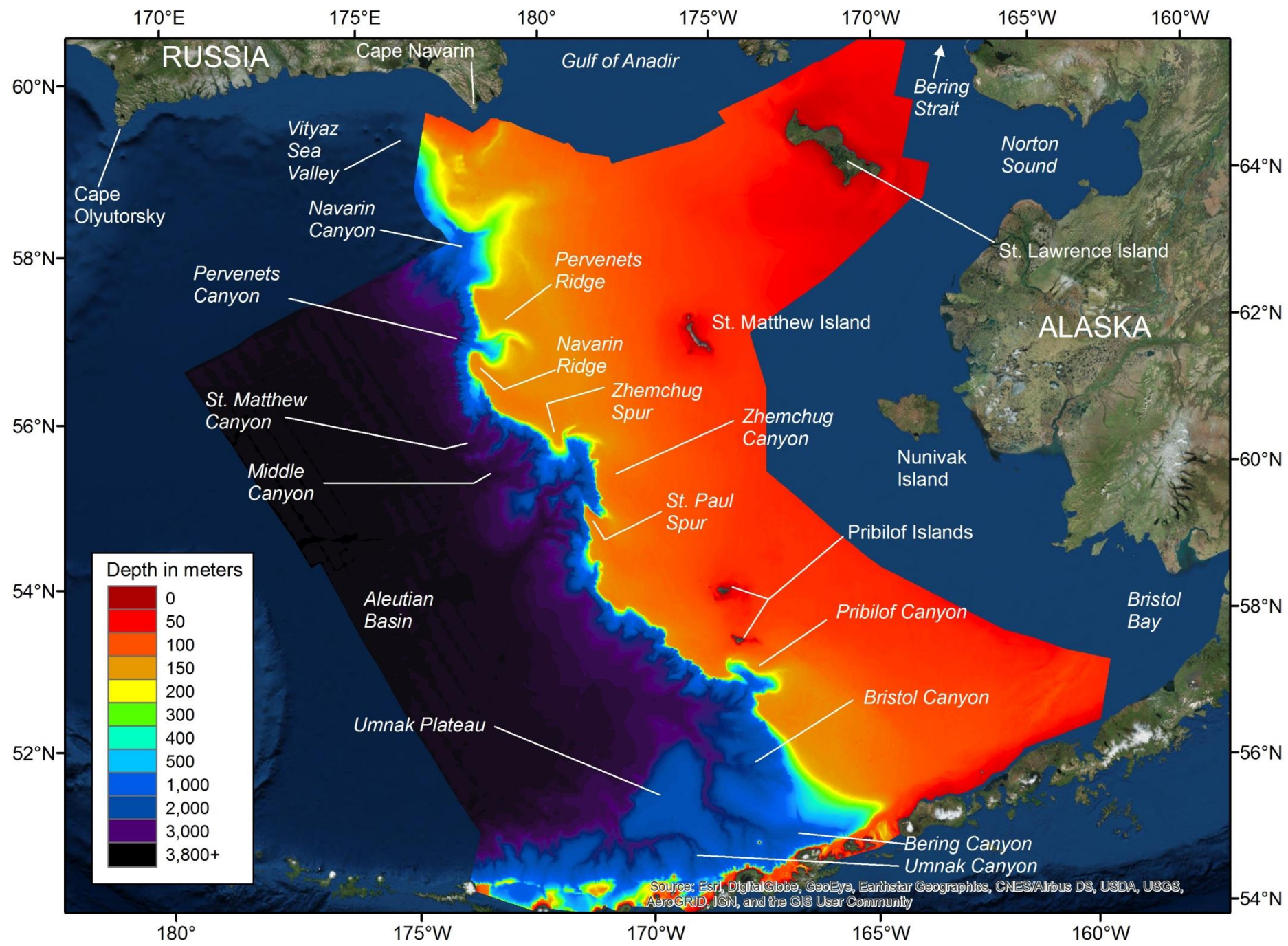
Mark Zimmermann – Fishery Biologist

Megan Prescott – GIS Technician

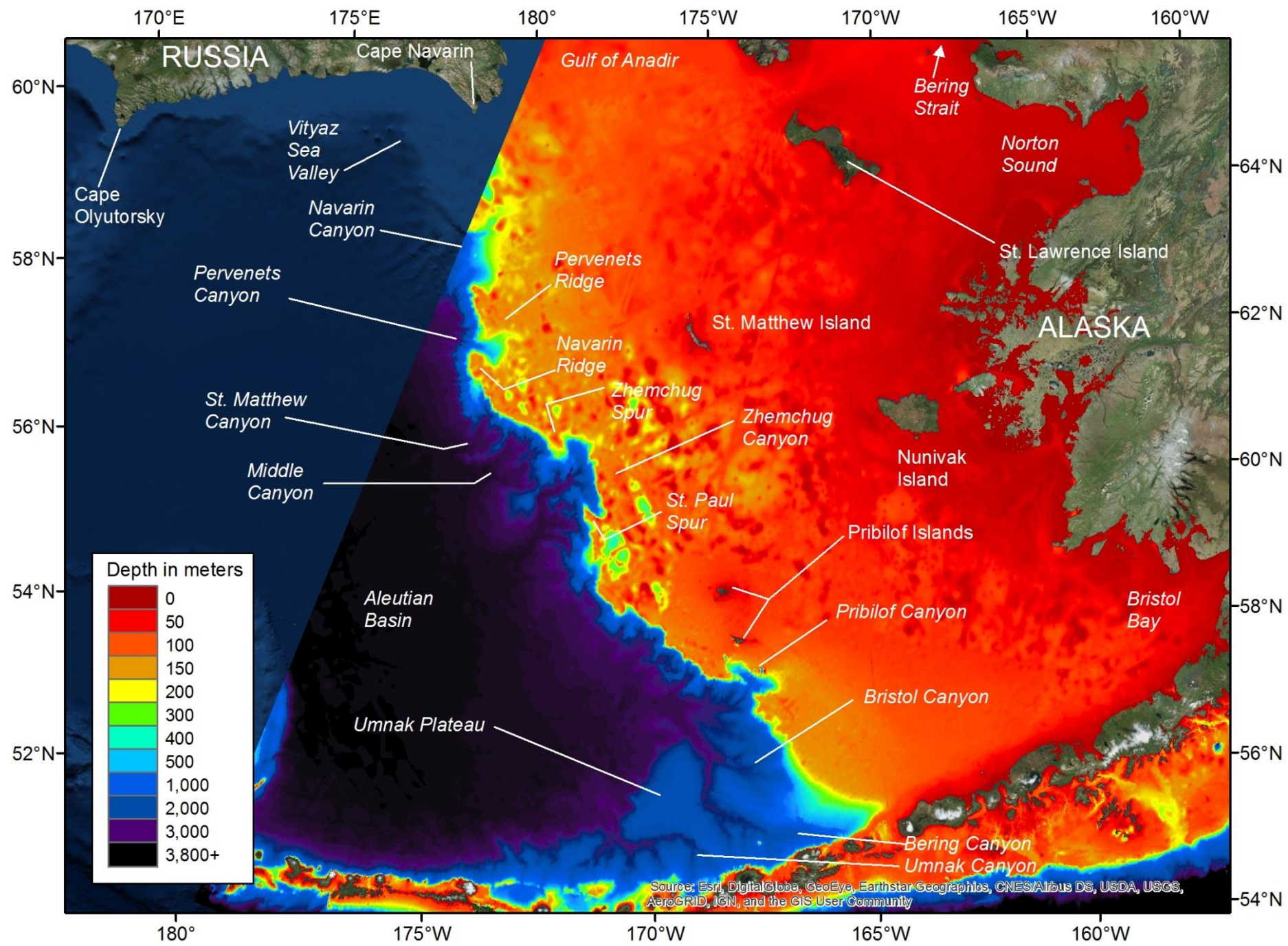
NOAA

**NATIONAL
MARINE
FISHERIES
SERVICE**

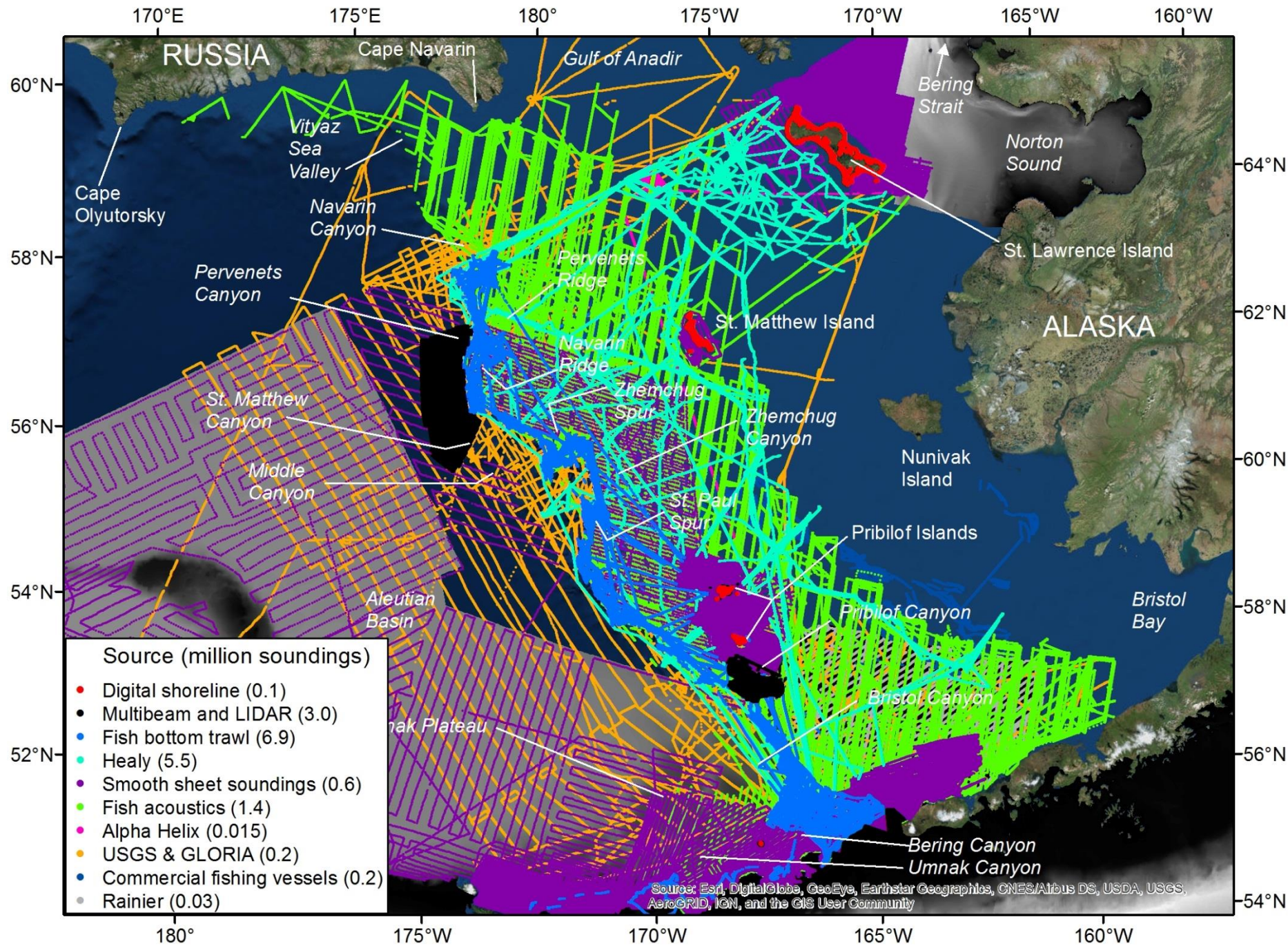


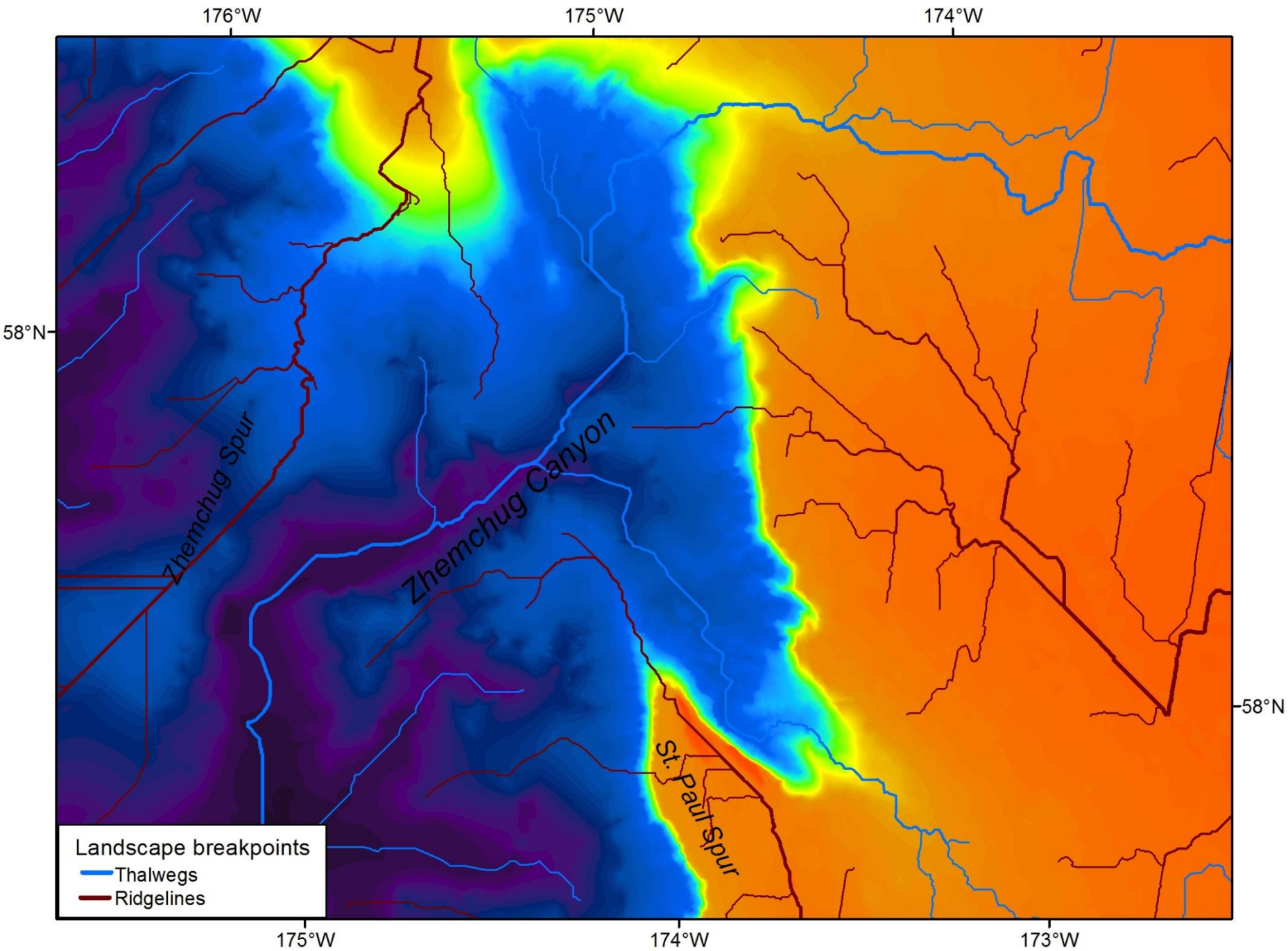


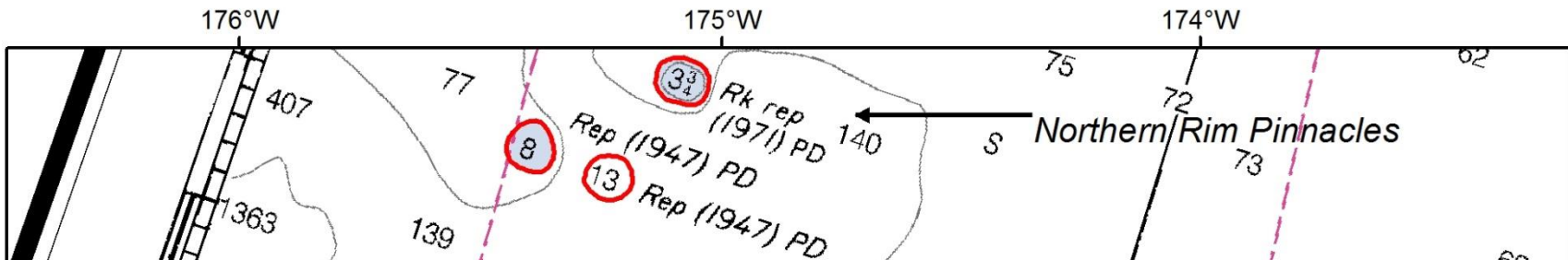
Source: Esri, DigitalGlobe, GeoEye, Earthstar Geographics, CNES/Airbus DS, USDA, USGS, AeroGRID, IGN, and the GIS User Community



Source: Esri, DigitalGlobe, GeoEye, Earthstar Geographics, CNES/Airbus DS, USDA, USGS, AeroGRID, IGN, and the GIS User Community







7(515)72. (1 reported northw (1971), exists in

SECTION IV 71

NOTICE TO MARINERS MARINE INFORMATION REPORT AND SUGGESTION SHEET

Observer QM3 ROLAND E. BART

Ship's Name CGC JARVIS (WHEC-725) Master/Commanding Officer CAPT. B.F. HOLLINGSWORTH

Mailing Address FPO SAN FRANCISCO, CALIF. 96601

Date of Observation 10 MAY 1974 Time of Observation (GMT) 1300Z

Position: Lat. 57°39.2' N Long. 173°24' W

Charts affected (Nationality) 16006 (USA) Ed. No. 23

Corrected thru N.M. 17 of 19 74 16011 25th ED 21/74
530 16th ED 20/74

Publication affected (Nationality) _____ Page No. _____

Corrected thru N.M. _____ of 19 _____

—Sunken rock (s), Rock, Rep. (ingrad, 71.)

0005 (X) Res

0427 (X) Pas

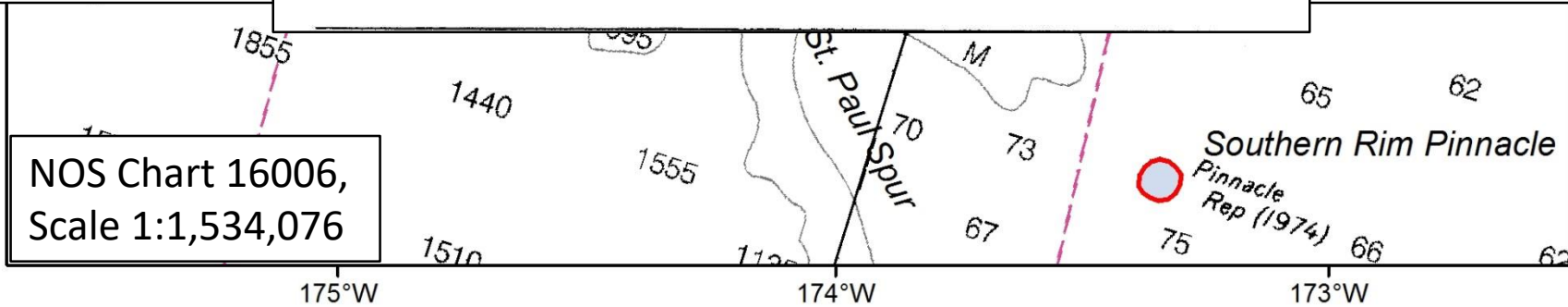
Lat

tin

Position

atly is con-

Water



NOS Chart 16006,
Scale 1:1,534,076

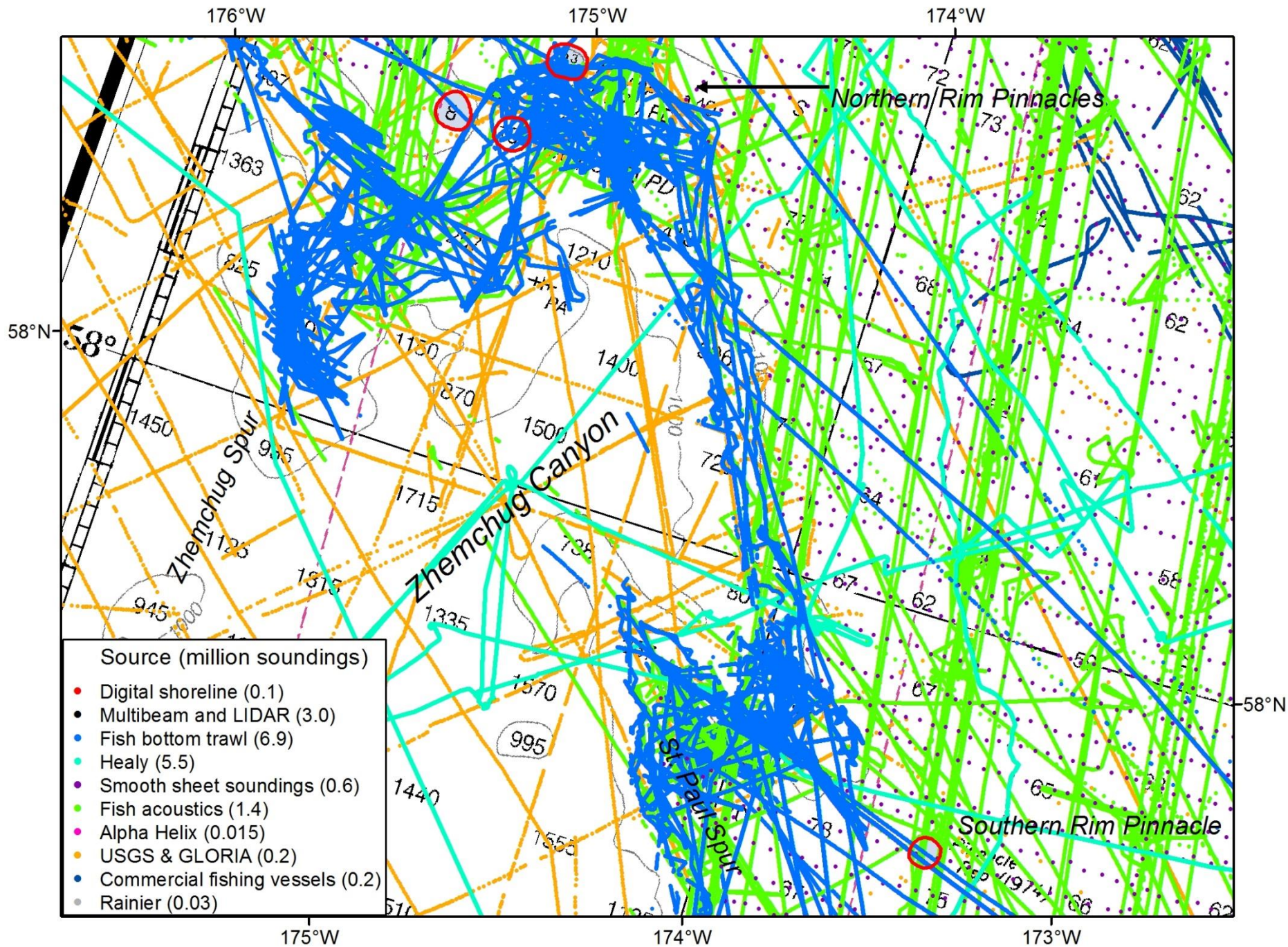
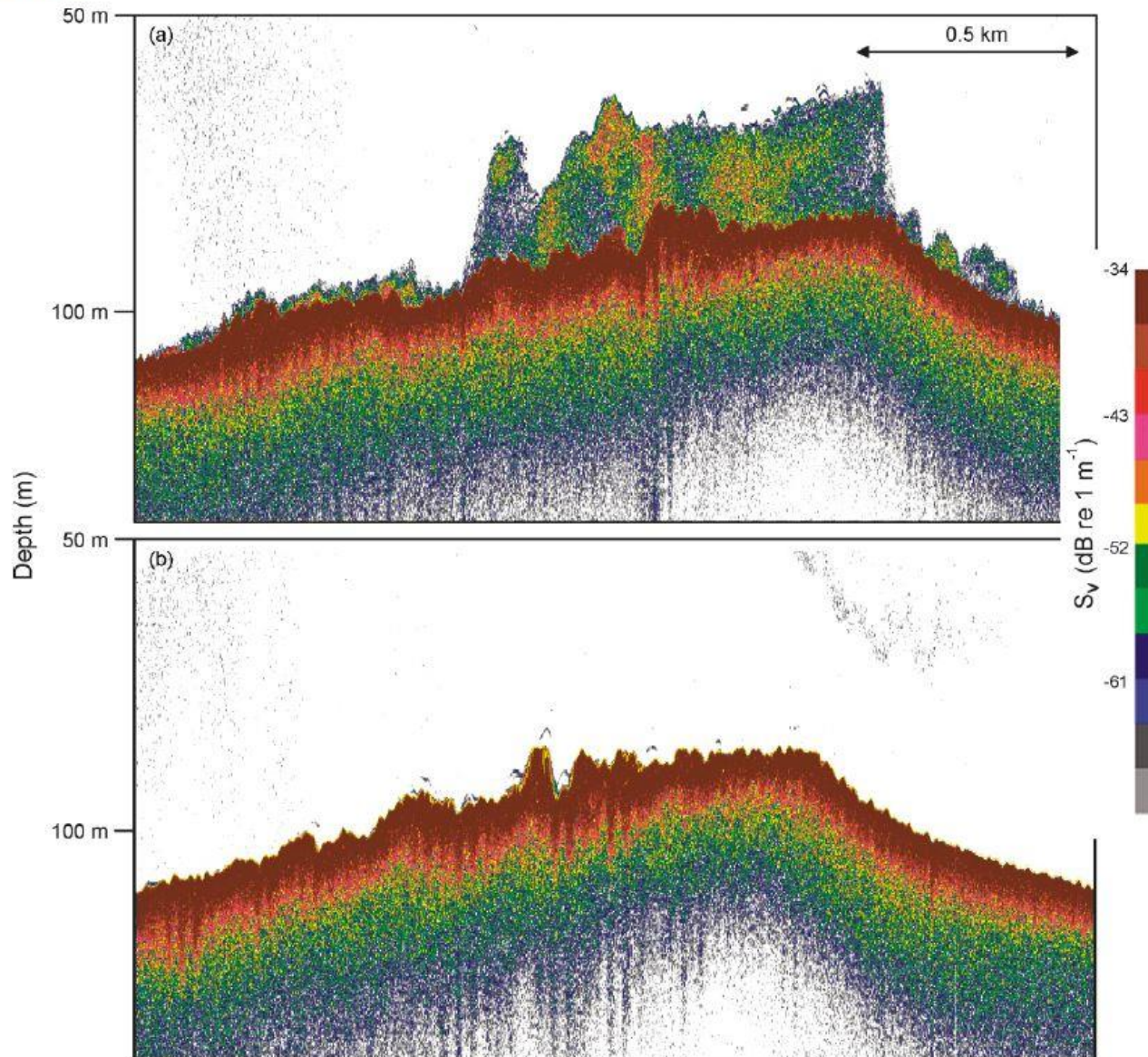
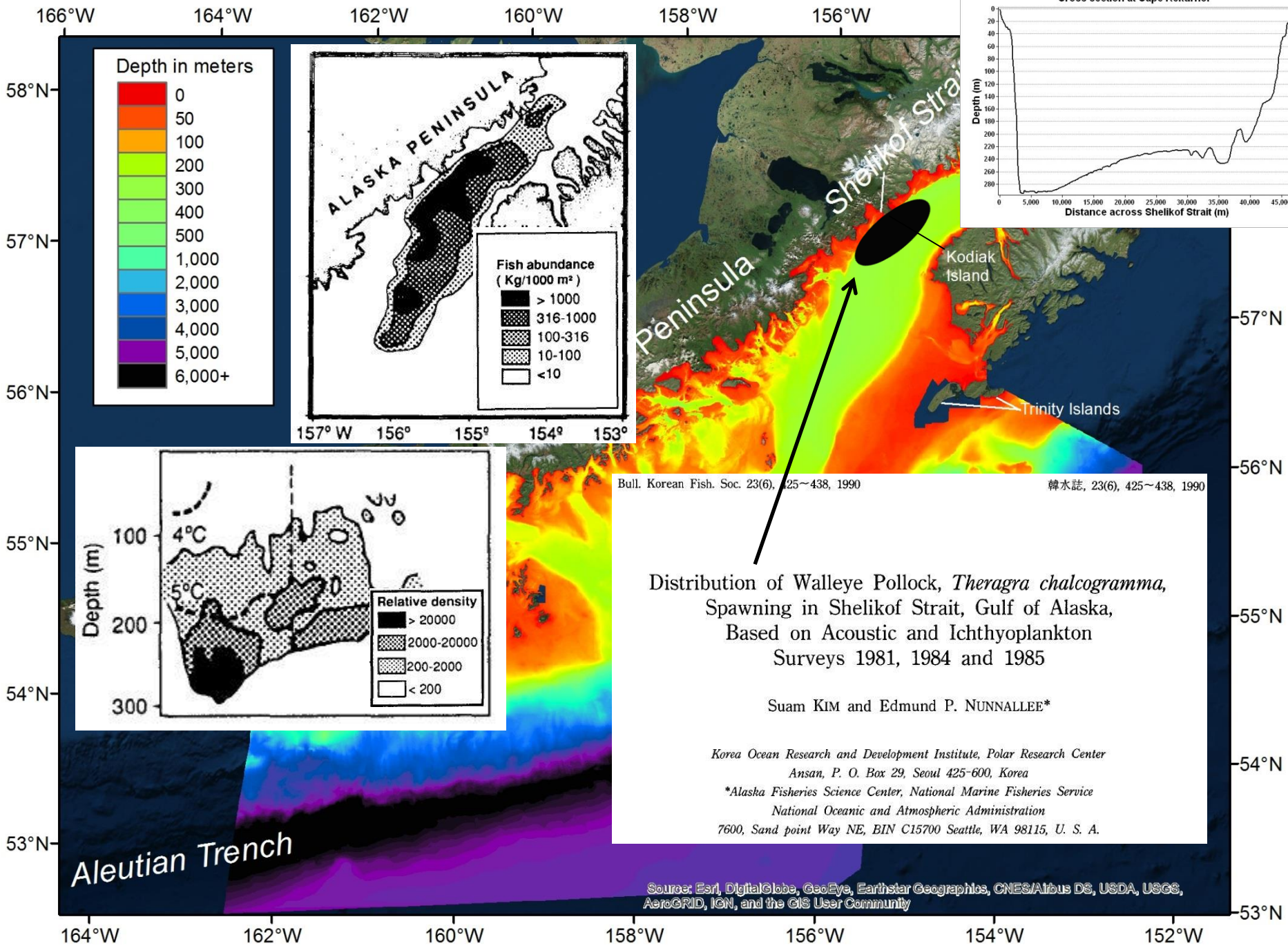


Fig. 8. Acoustic volume backscatter strength (S_v , dB re 1 m^{-1}) from transects over the Zhemchug ridges showing (a) daytime and (b) nighttime volume backscatter in the water column from 40 m below surface to the seafloor. Data were collected using a calibrated 38 kHz Simrad ES-60 echosounder.





Bull. Korean Fish. Soc. 23(6), 425~438, 1990 韓水誌, 23(6), 425~438, 1990

Distribution of Walleye Pollock, *Theragra chalcogramma*,
 Spawning in Shelikof Strait, Gulf of Alaska,
 Based on Acoustic and Ichthyoplankton
 Surveys 1981, 1984 and 1985

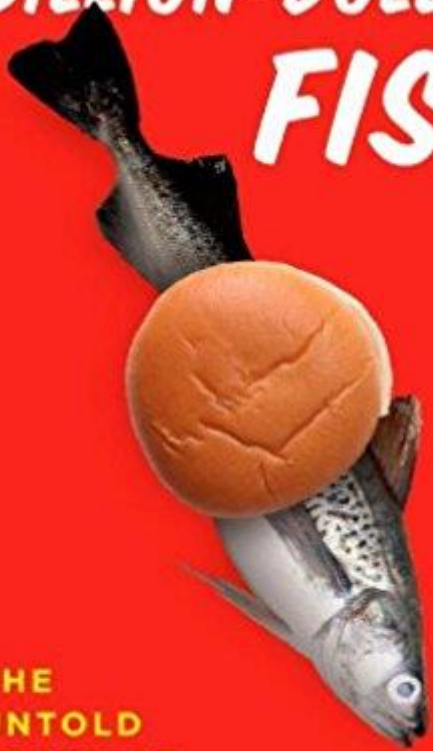
Suam KIM and Edmund P. NUNNALLEE*

Korea Ocean Research and Development Institute, Polar Research Center
 Ansan, P. O. Box 29, Seoul 425-600, Korea
 *Alaska Fisheries Science Center, National Marine Fisheries Service
 National Oceanic and Atmospheric Administration
 7600, Sand point Way NE, BIN C15700 Seattle, WA 98115, U. S. A.

Source: Esri, DigitalGlobe, GeoEye, Earthstar Geographics, CNES/Airbus DS, USDA, USGS, AeroGRID, IGN, and the GIS User Community

Copyrighted Material

BILLION-DOLLAR FISH



THE
UNTOLD
STORY OF
ALASKA
POLLOCK

Kevin M. Bailey

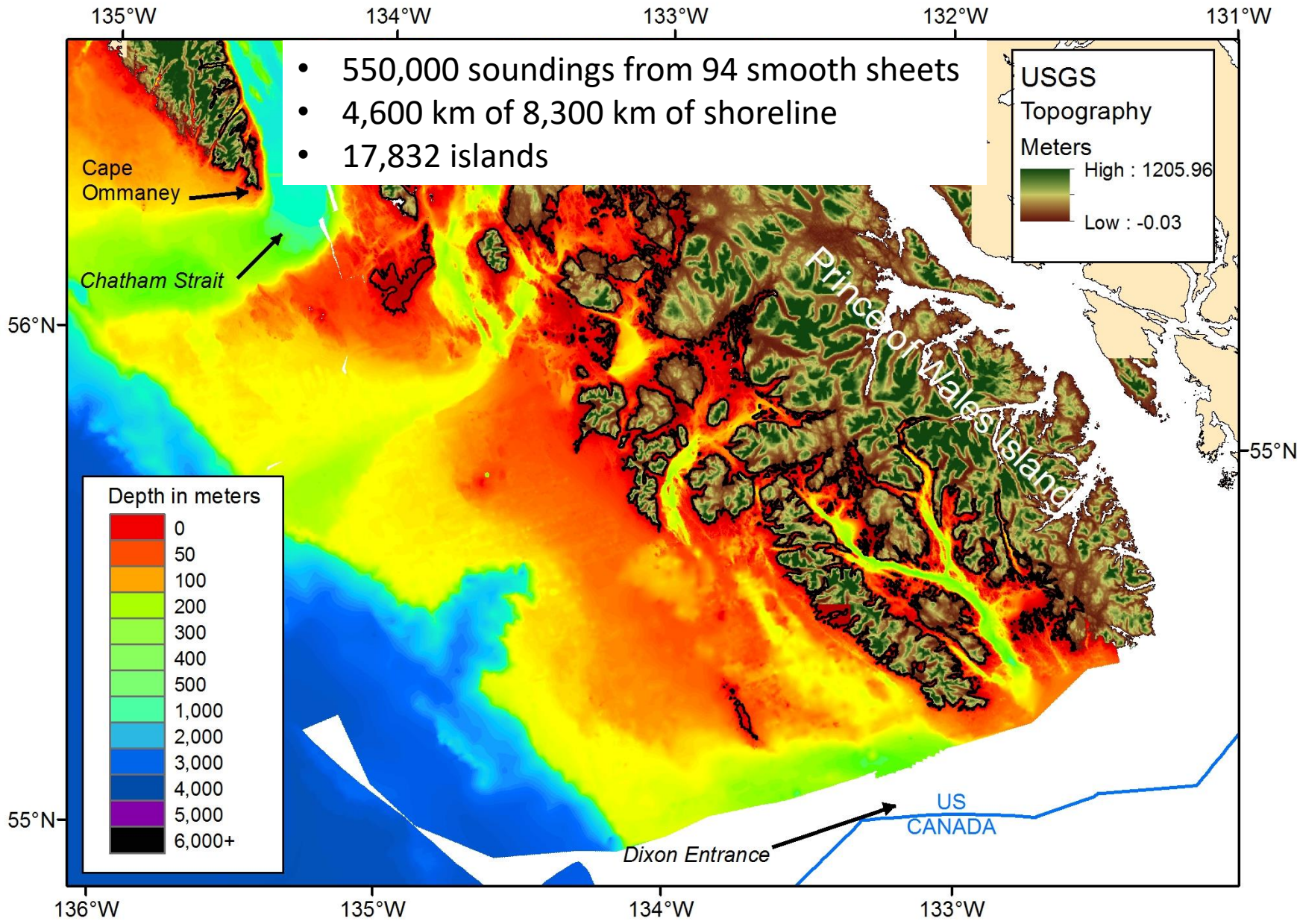
Copyrighted Material

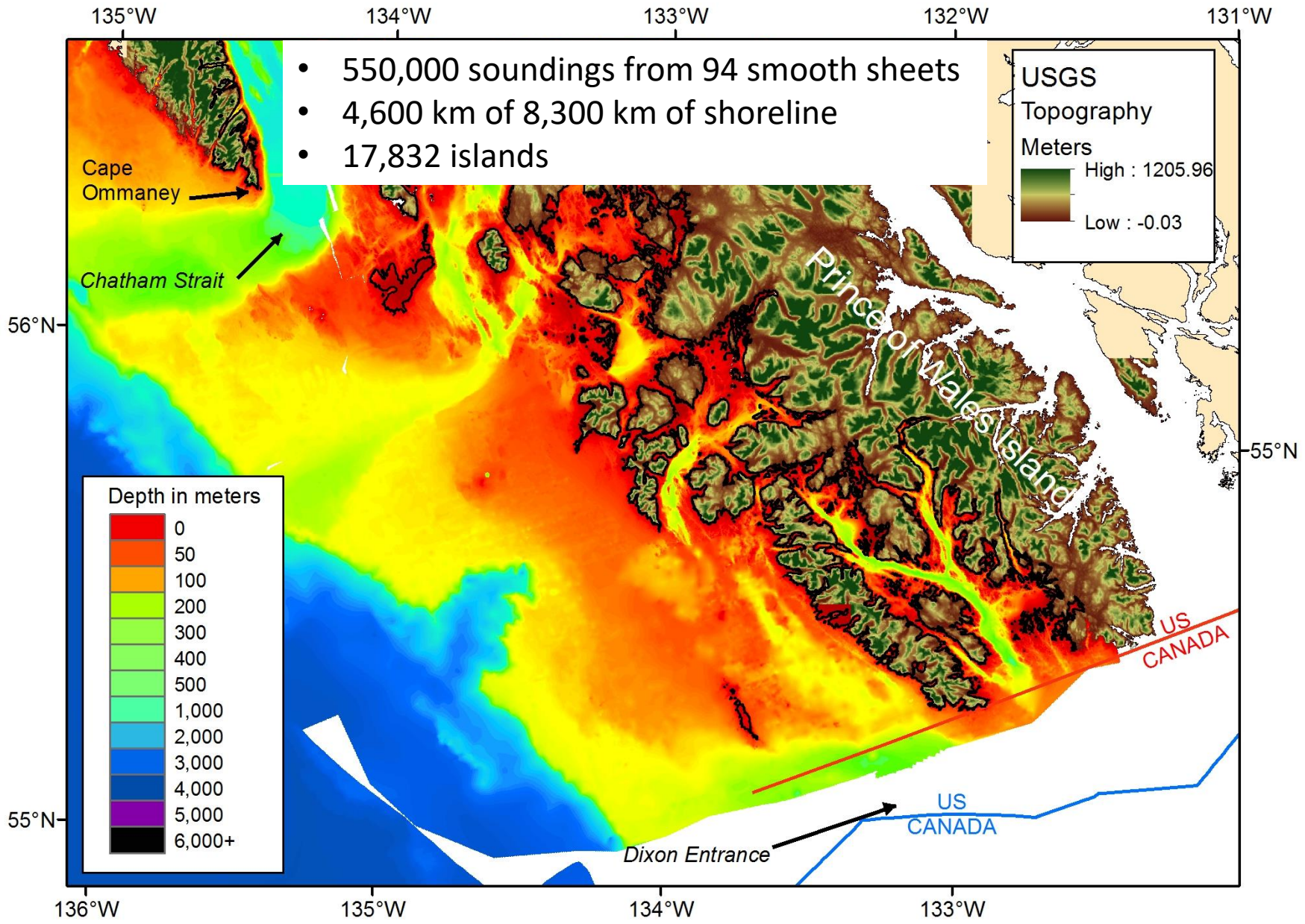


FOR US THERE'S
ONLY ONE FISH
IN THE SEA.

Alaska
pollock.



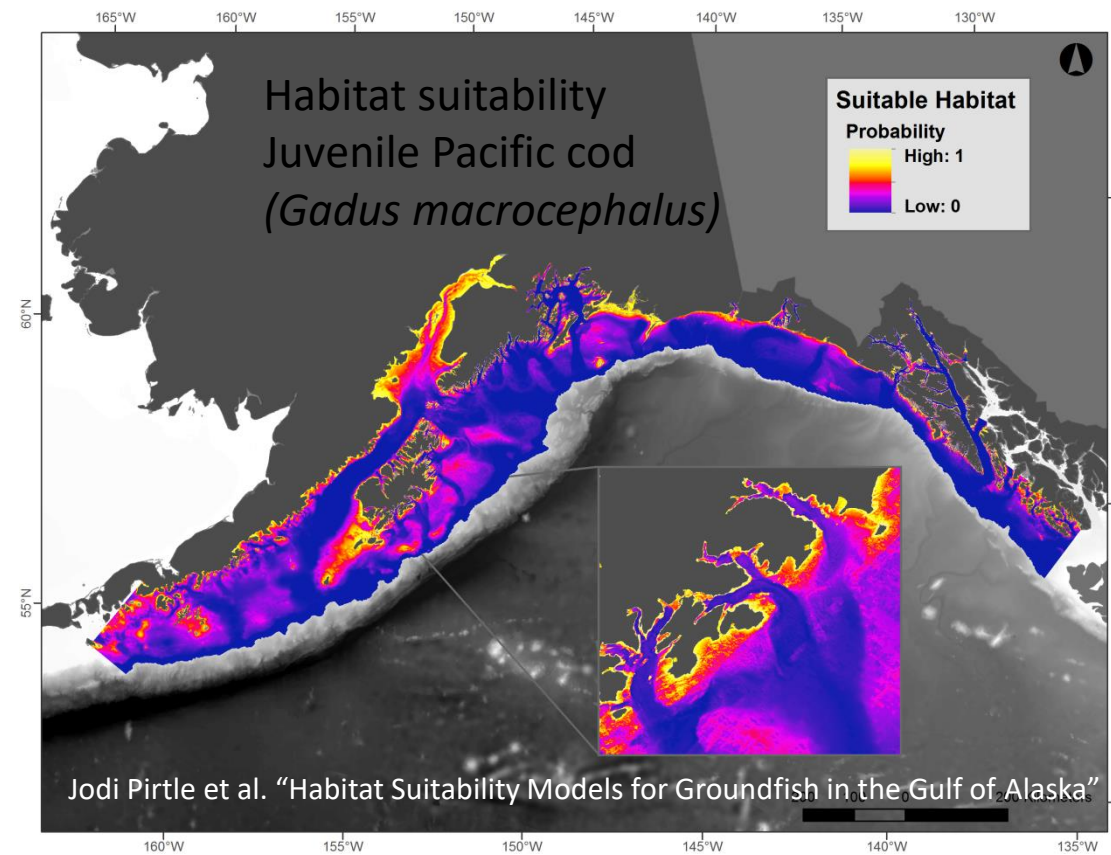




Juvenile groundfish habitat modeling



Species	Sample size	AUC Test mean \pm SD	Variable-1 (%)	Variable-2 (%)	Variable-3 (%)	Variable-4 (%)
Sablefish						
HSM	758	0.71 \pm 0.03	BPI-33 (47.1)	Depth (39.8)	Slope (6.9)	Eastness (2.3)
HSM with Substrate	579	0.73 \pm 0.03	Depth (38.7)	BPI-65 (30.9)	Rockiness (19.9)	Slope (8.4)
Pacific cod						
HSM	284	0.87 \pm 0.02	Depth (88.3)	BPI-17 (4.8)	Slope (3.4)	Curv. Pro. (2.4)
HSM with Substrate	112	0.90 \pm 0.02	Depth (85.3)	Rockiness (7.2)	BPI-9 (2.6)	Northness (1.9)
Pollock						
HSM	1,696	0.70 \pm 0.02	Depth (47.4)	BPI-33 (29.1)	Curv. Pro. (12.1)	Slope (5.8)
HSM with Substrate	812	0.73 \pm 0.02	Depth (40.4)	BPI-65 (34.0)	Rockiness (15.2)	Slope (3.8)
Arrowtooth flounder						
HSM	1,668	0.72 \pm 0.01	Depth (57.3)	BPI-33 (33.1)	Slope (5.2)	Curv. Pro. (1.9)
HSM with Substrate	1,052	0.74 \pm 0.01	Depth (59.6)	BPI-65 (20.7)	Rockiness (16.3)	Eastness (1.5)
Pacific ocean perch						
HSM	1,449	0.76 \pm 0.01	Depth (84.8)	BPI-65 (8.0)	Northness (2.3)	Curv. Pln. (1.6)
HSM with Substrate	997	0.74 \pm 0.02	Depth (85.5)	BPI-65 (6.7)	Rockiness (4.3)	Northness (1.9)

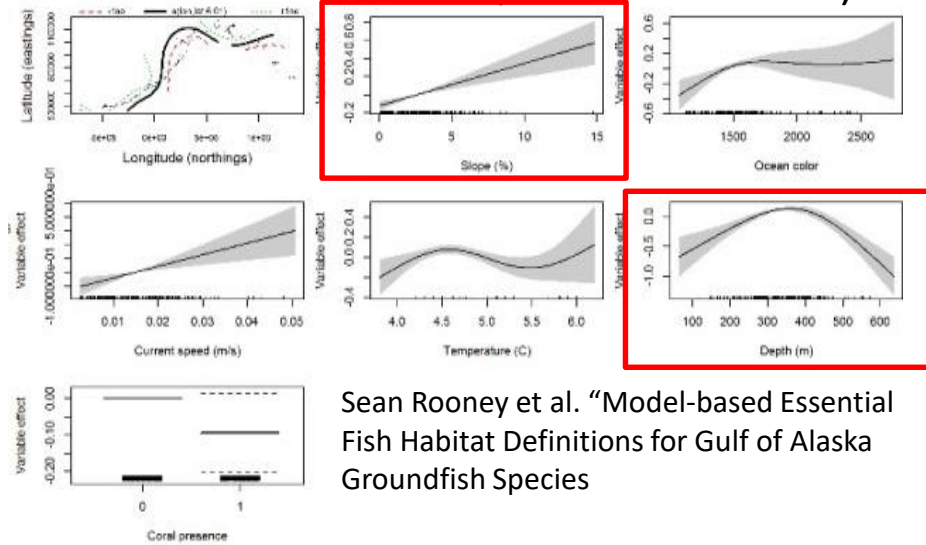




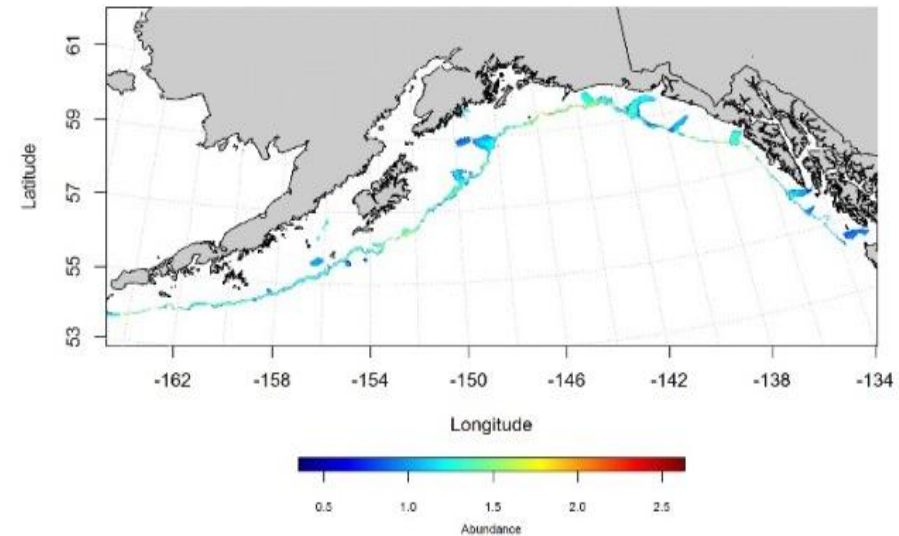
Habitat Protection
Reaches Milestone

ESSENTIAL FISH HABITAT

Shorttraker rockfish (*Sebastes borealis*)



Sean Rooney et al. "Model-based Essential Fish Habitat Definitions for Gulf of Alaska Groundfish Species"



Future work

- Publish EBS, wGOA and eGOA bathymetry
- Revise Aleutian Islands (2017-2019)
- Arctic IBCAO (2018)
- Data gaps map for Alaska
- Acquire more commercial fisher data