

THE SURVEYOR ROV RESOLUTION @ SPEED





SURVEYOR INTERCEPTOR (SROV)



Benefits

Unsurpassed resolution and performance with substantial cost savings

Features

- Pure sensor carrier
- Increased speed up to 4 times existing ROVs
- Stable and accurate
- Unlimited power and data transmission

Flexible

- No switch-over needed between reconnaissance and detailed survey
- 700 kg payload
- Operational between 10 m - 2000 m

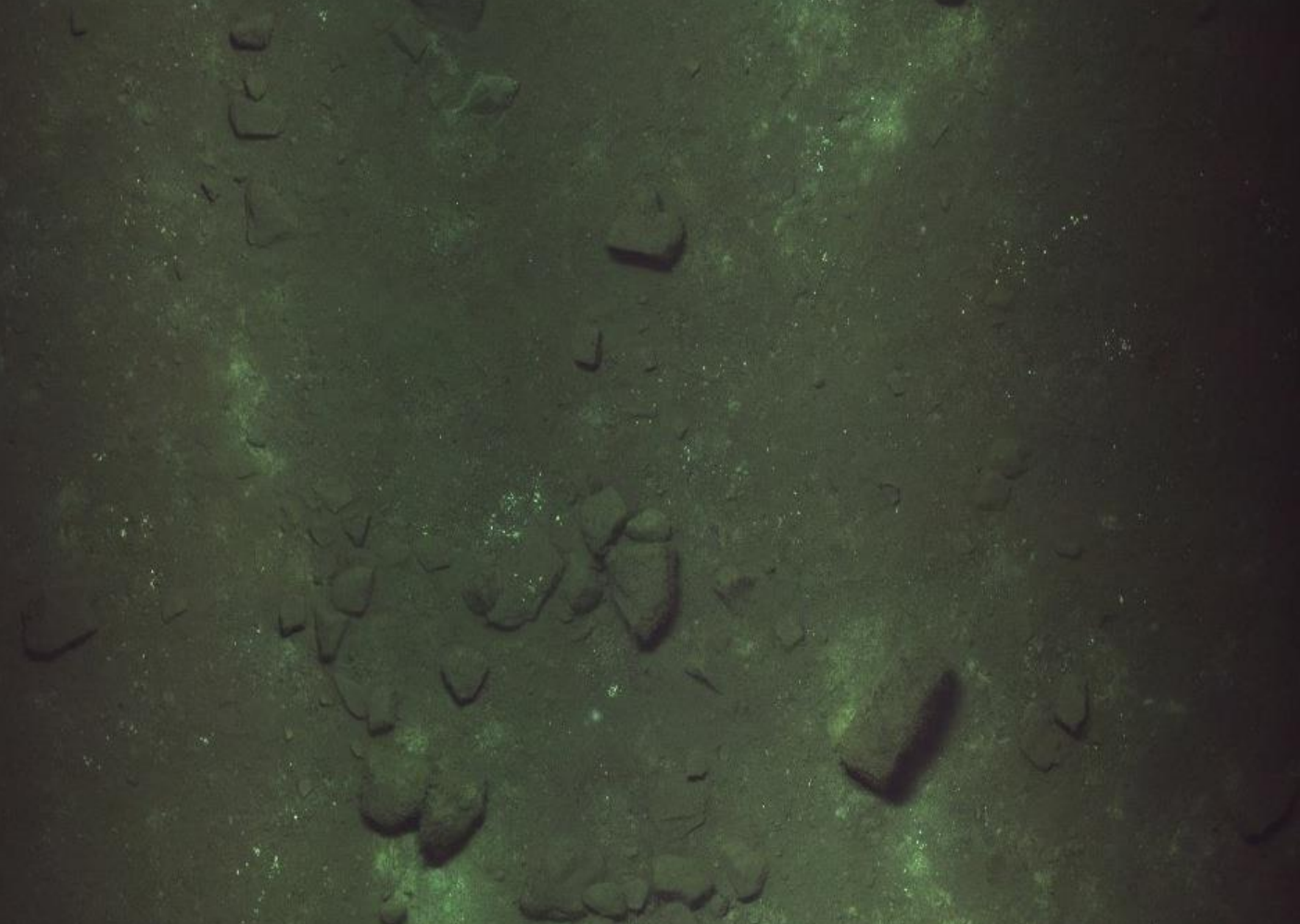
5 m long 3.5 tonnes
10 knots 24/7

Multibeam
Side Scan Sonar
Sub Bottom Profiler

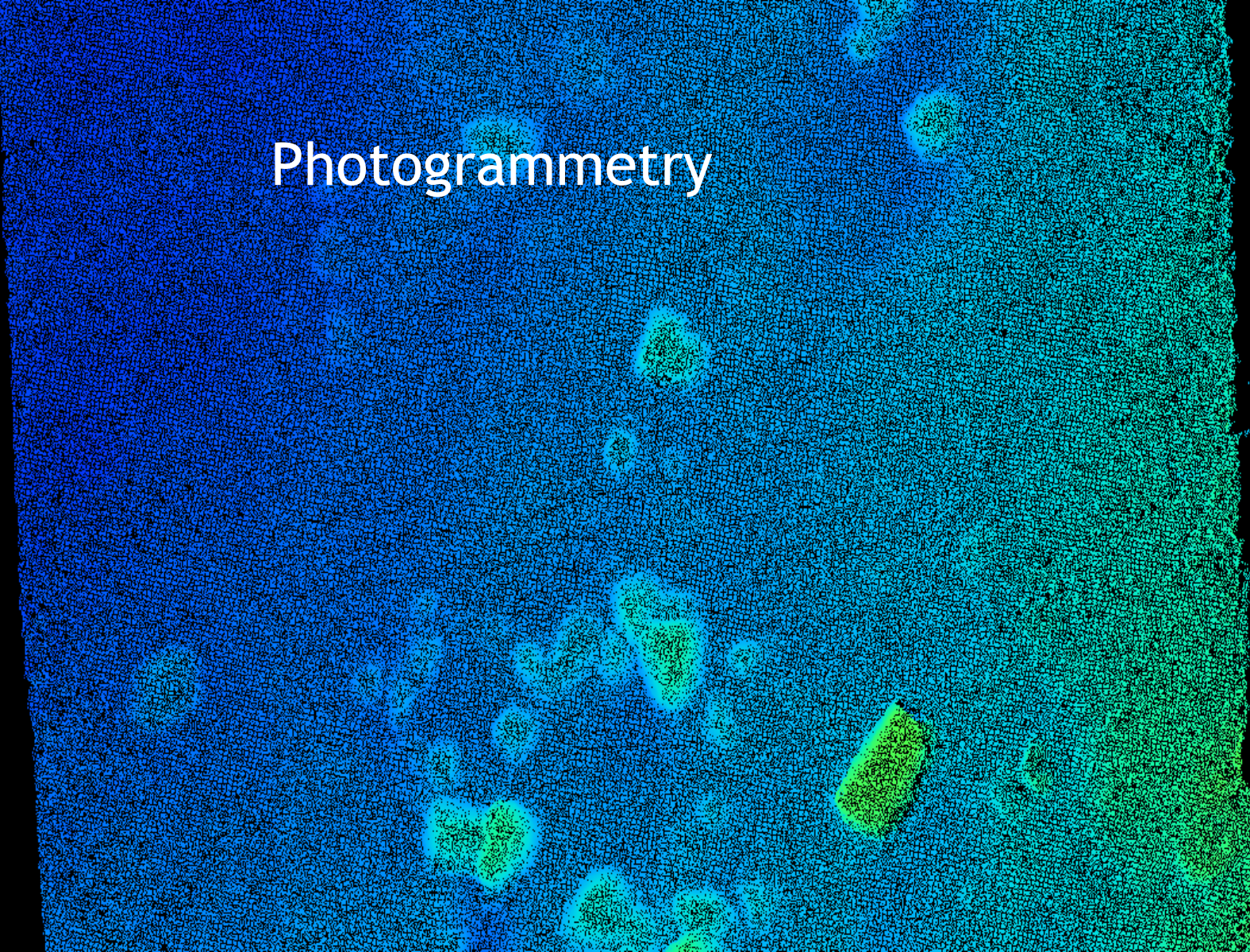
5 12MP still cameras
1 500 000 Lumen flashes
Laser bathymetry



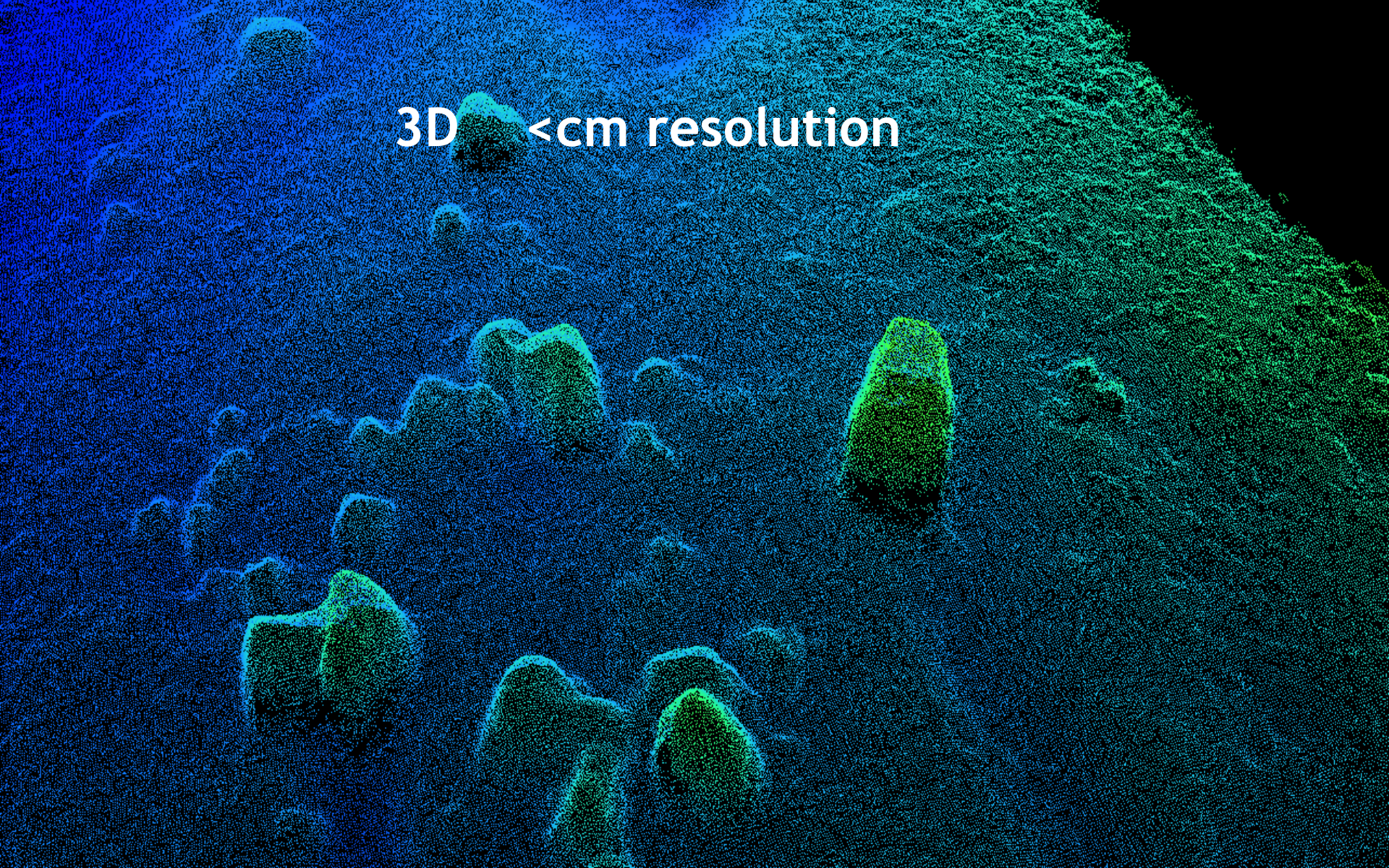
Ortophoto Baltic 5 m 4 knots



Photogrammetry



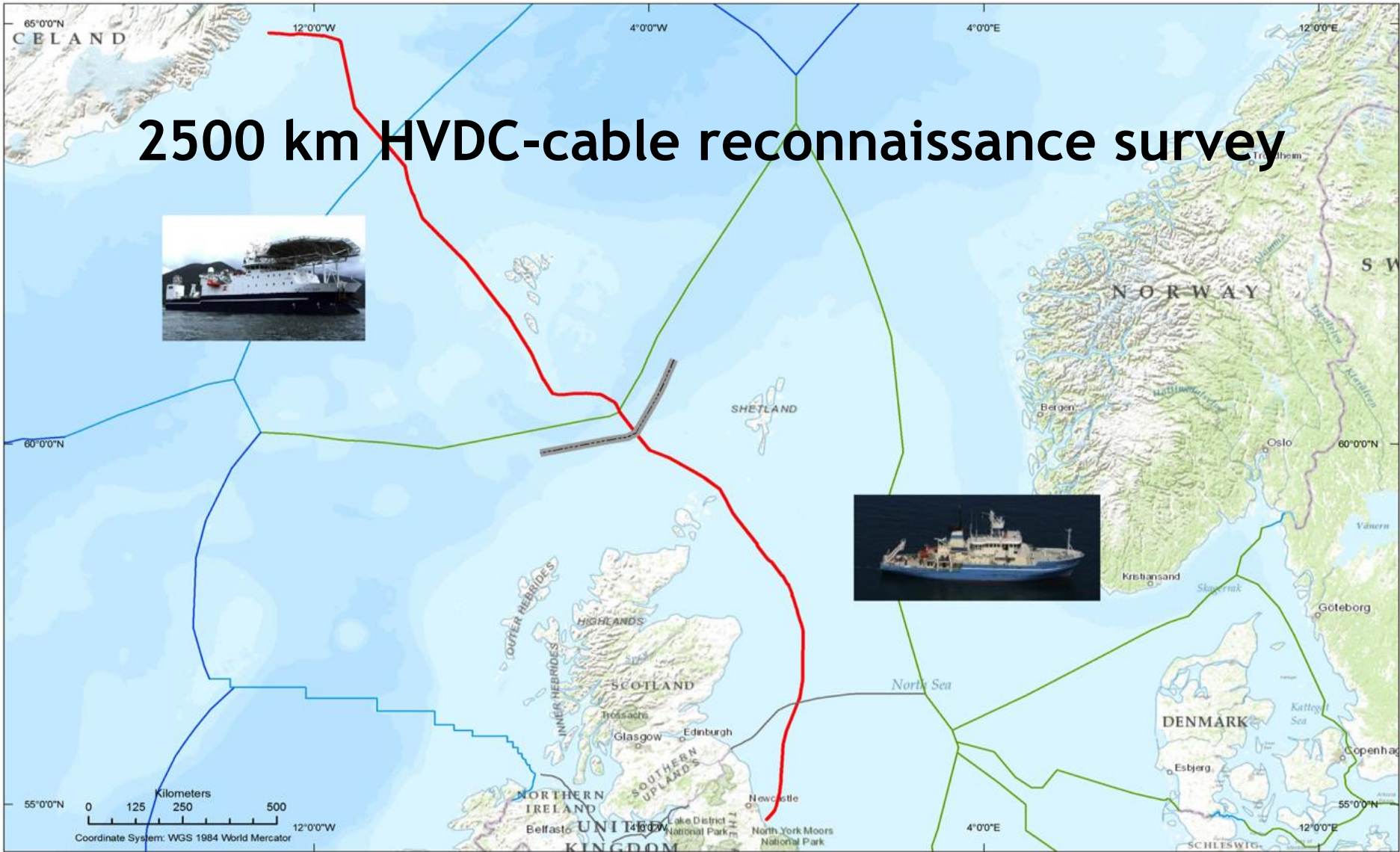
3D <cm resolution



Multibeam for comparison

The image displays a 2D diffraction pattern, likely from a crystal lattice. The pattern consists of a central spot and several surrounding spots, arranged in a roughly hexagonal or square grid. The spots are colored in shades of red, orange, yellow, green, and blue, indicating different intensities or phases. The background is dark, and the spots are arranged in a regular, repeating pattern. The text "Multibeam for comparison" is overlaid in white at the top center of the image.

2500 km HVDC-cable reconnaissance survey

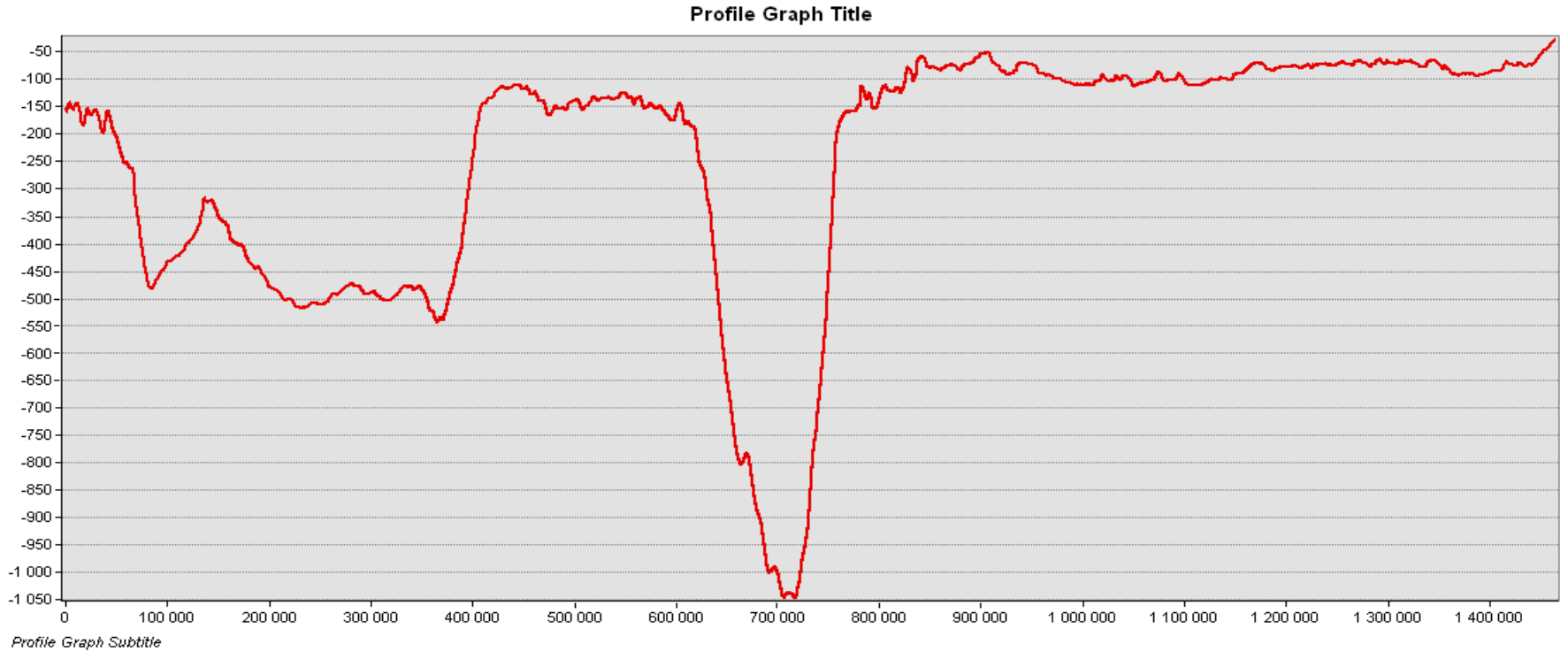


Length Profile

Iceland

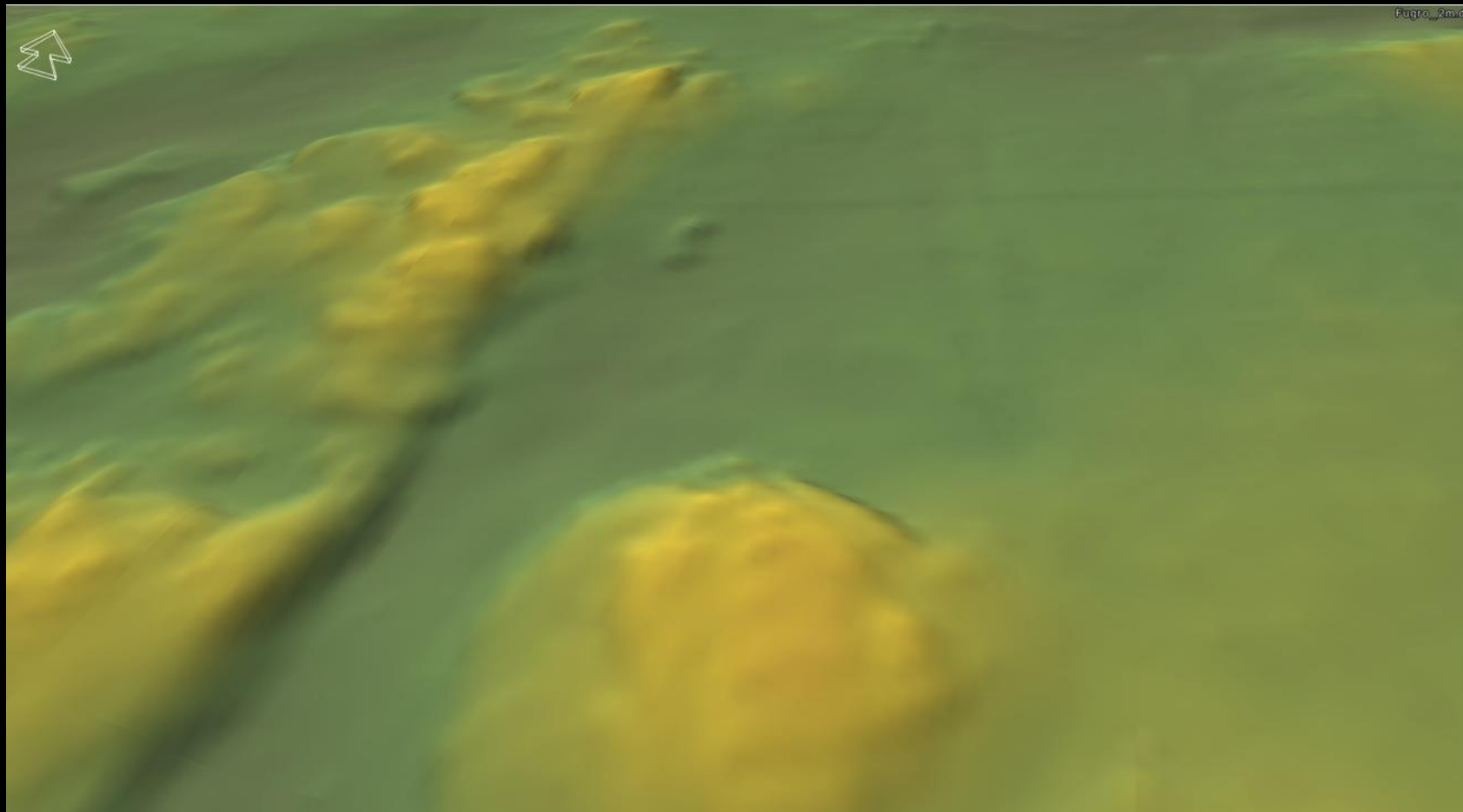
1 500 km

England

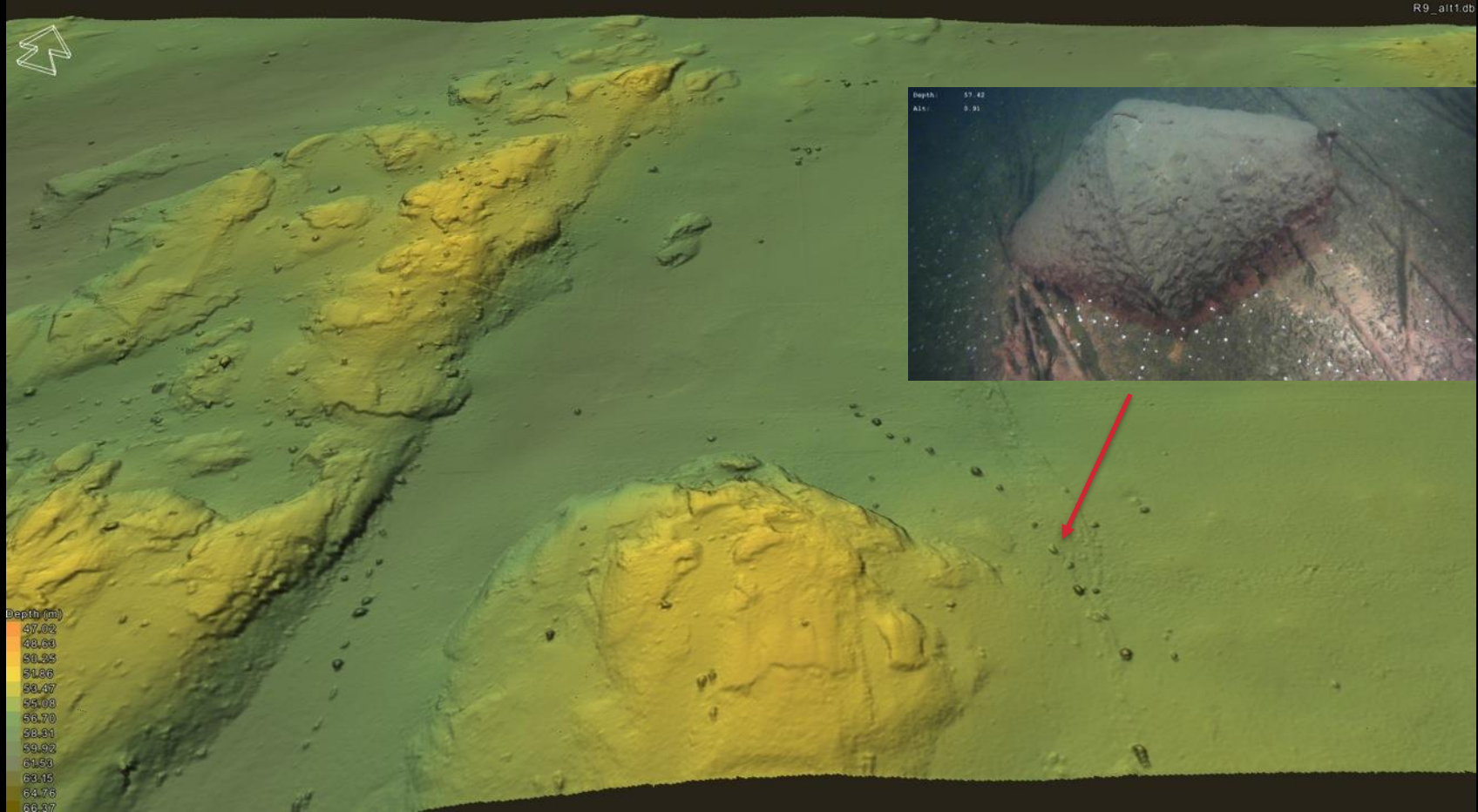




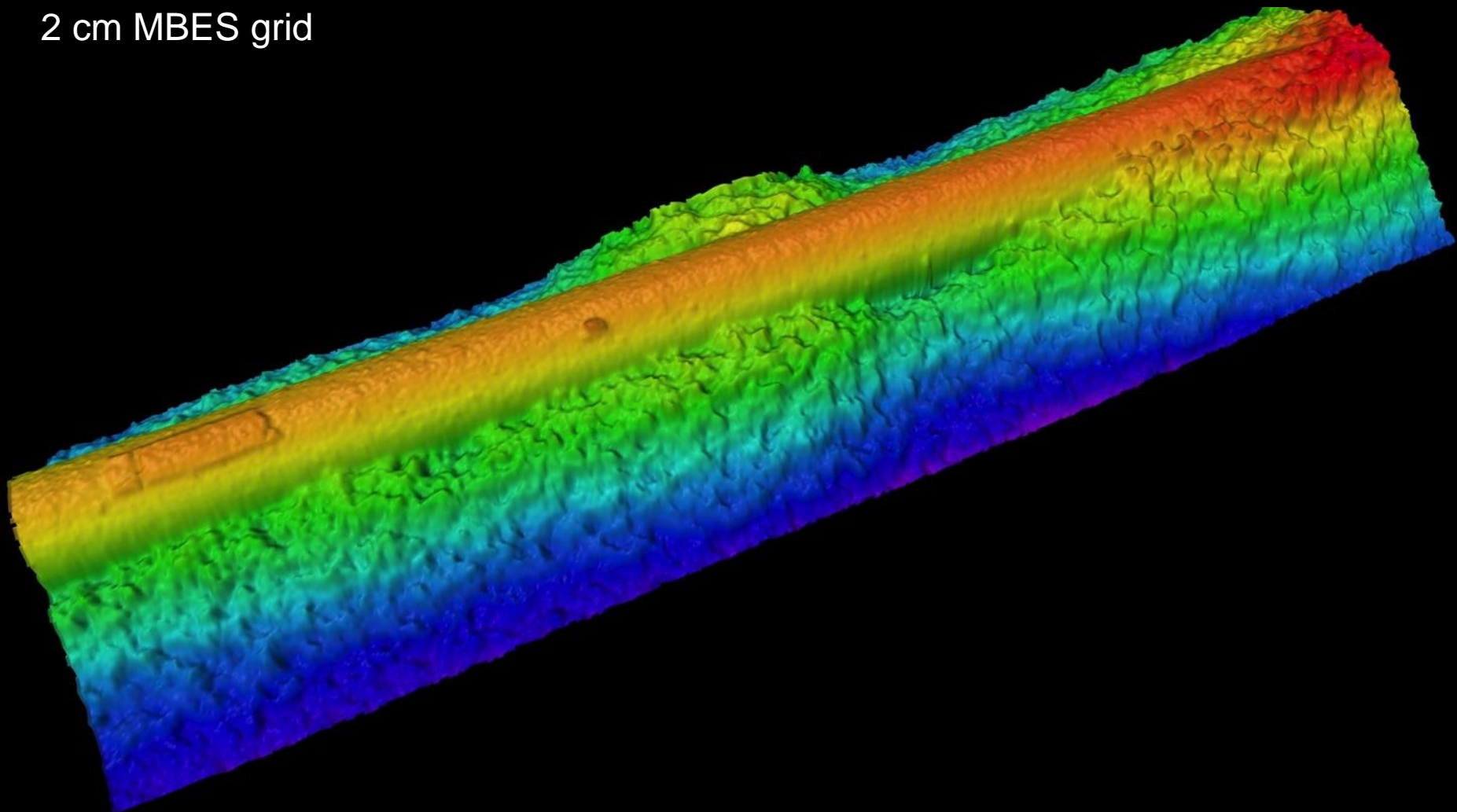
Vessel based survey 100 m

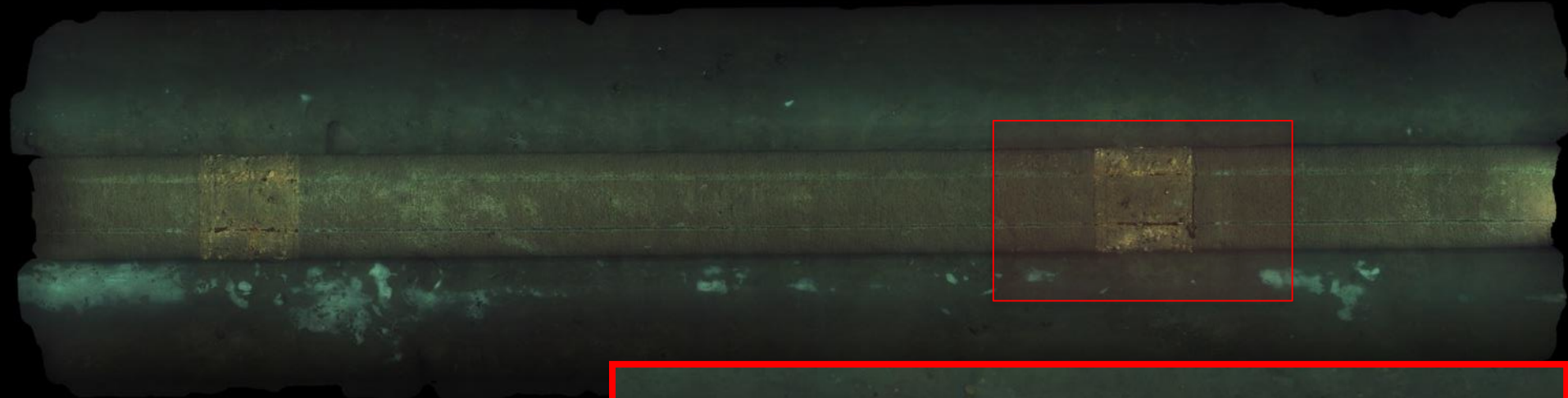


Detailed SROV MBES 15 m above sea floor



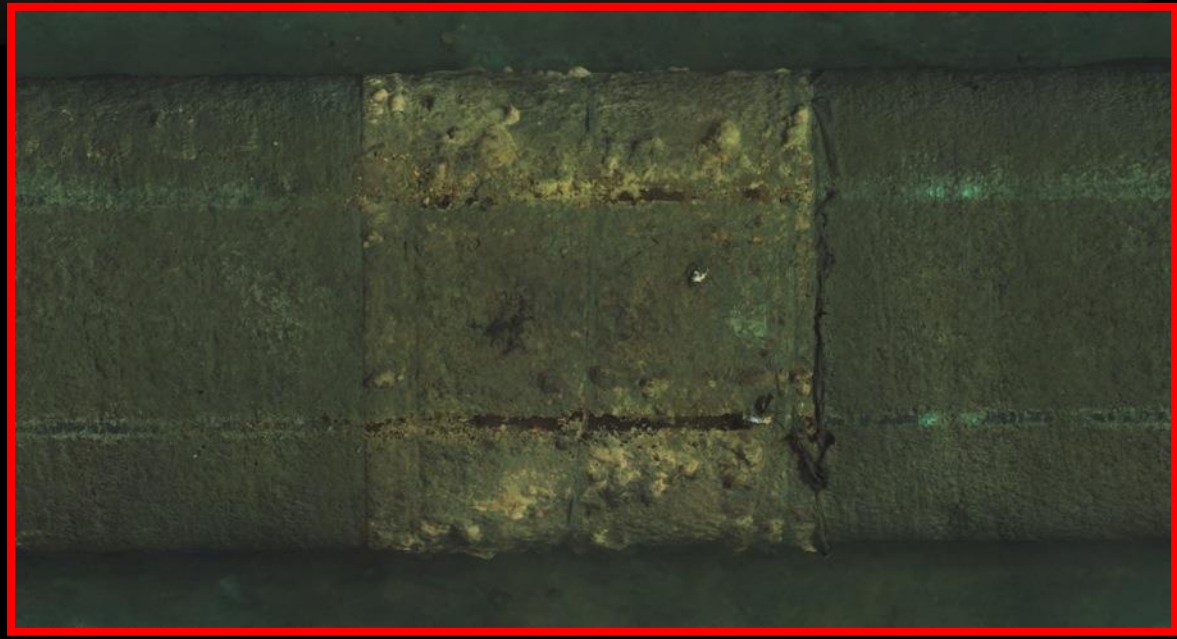
2 cm MBES grid

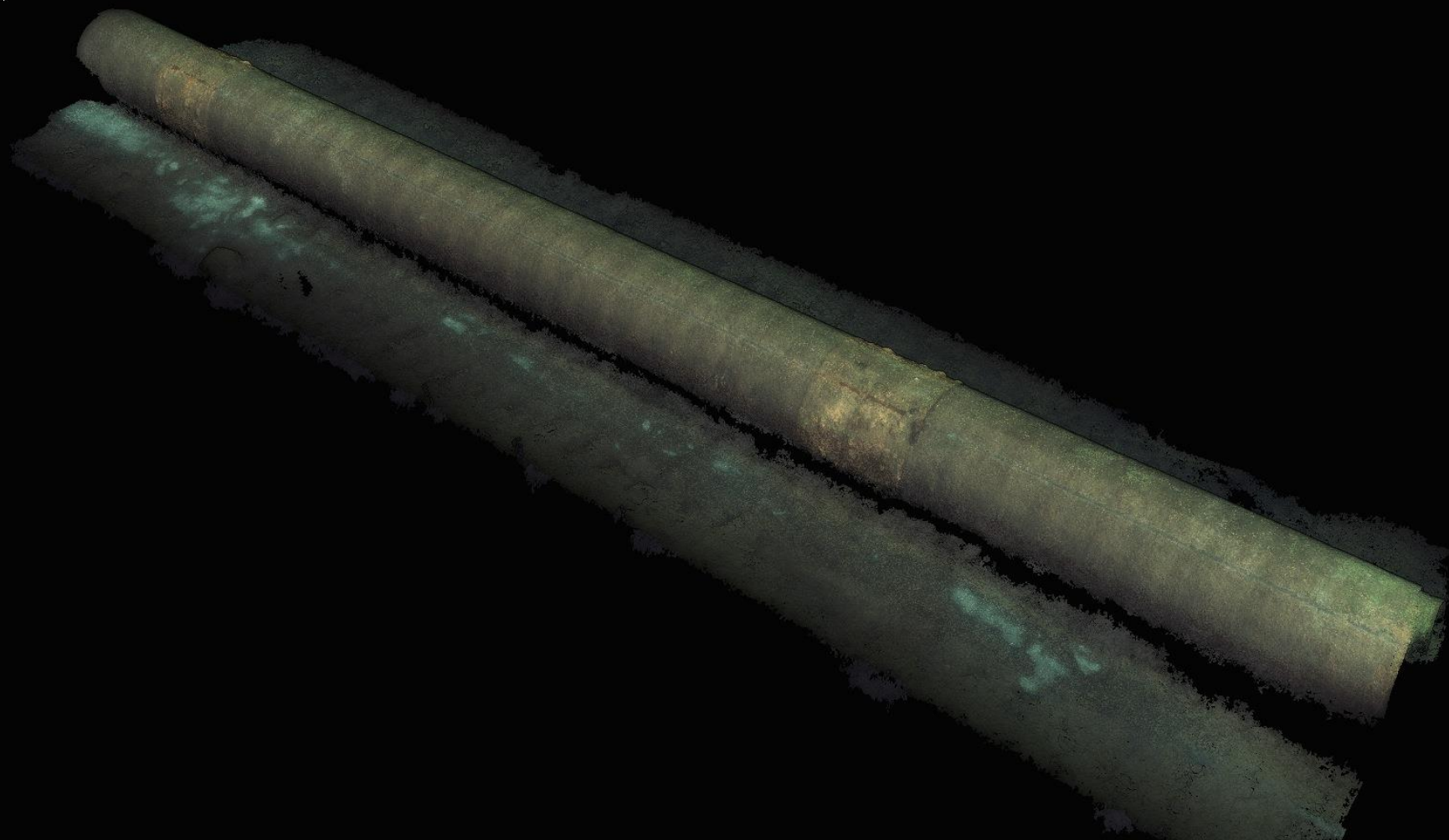


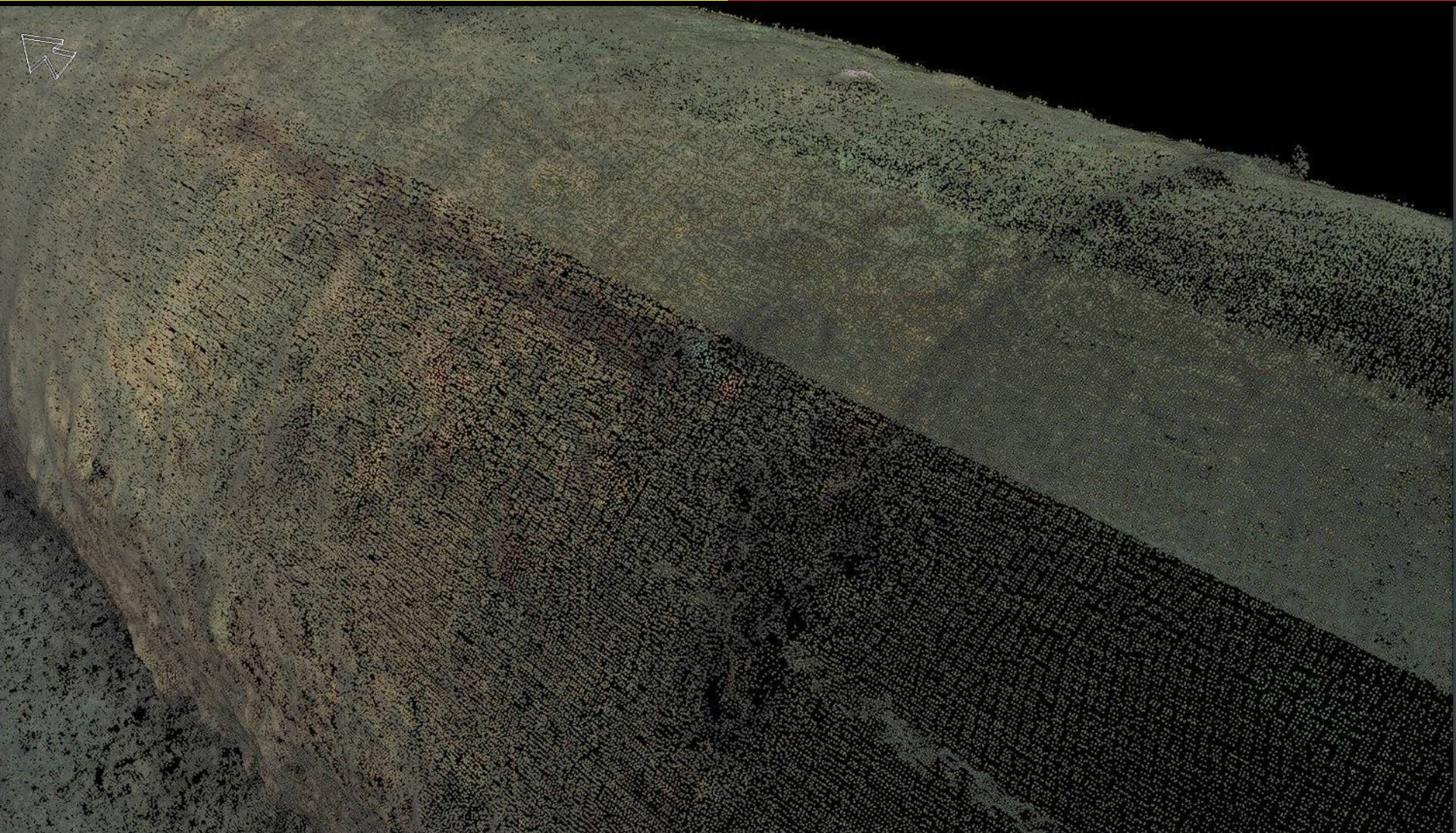


Photomosaic of 20m pipe
section

178 images 5 cameras

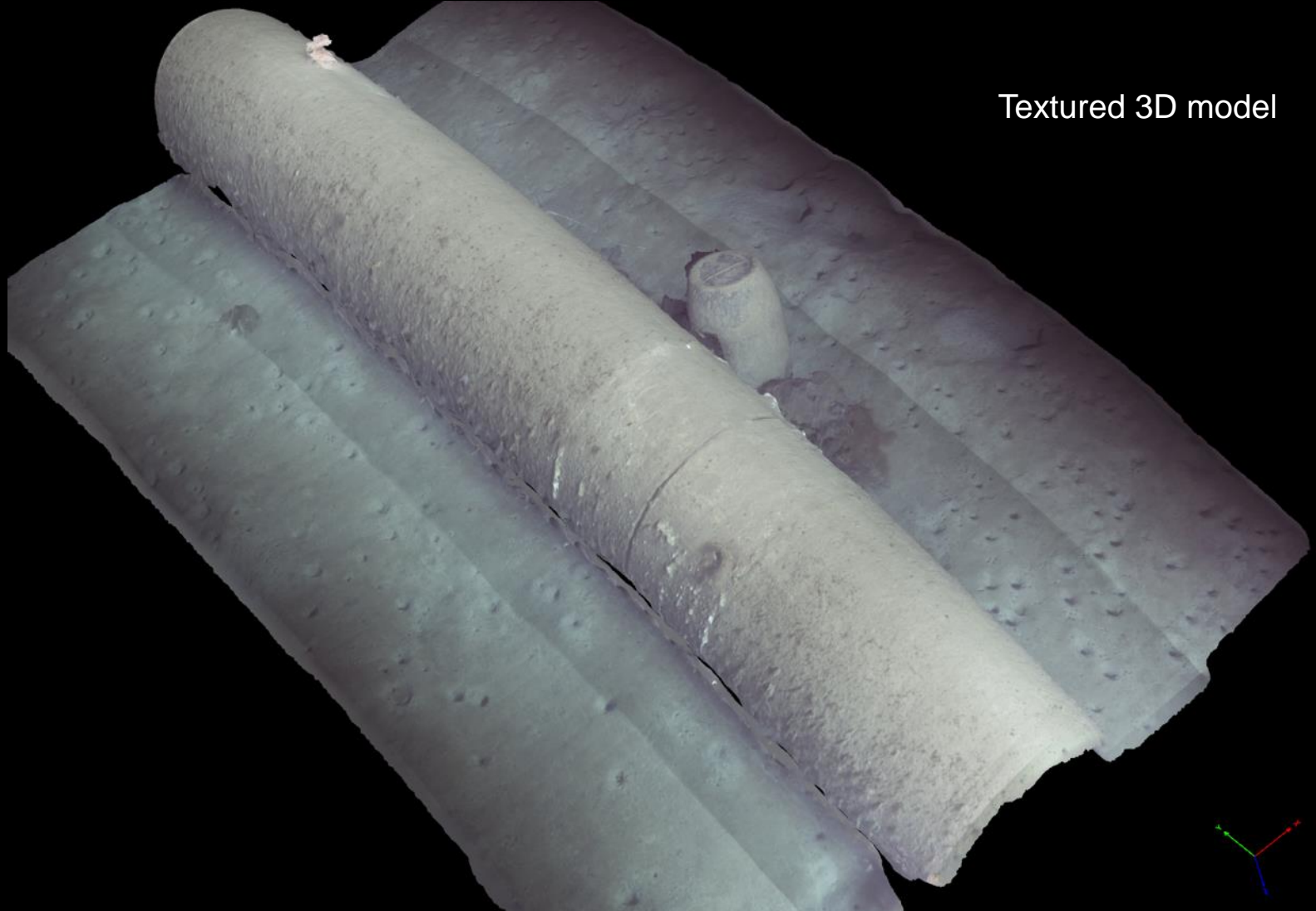




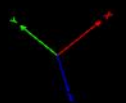


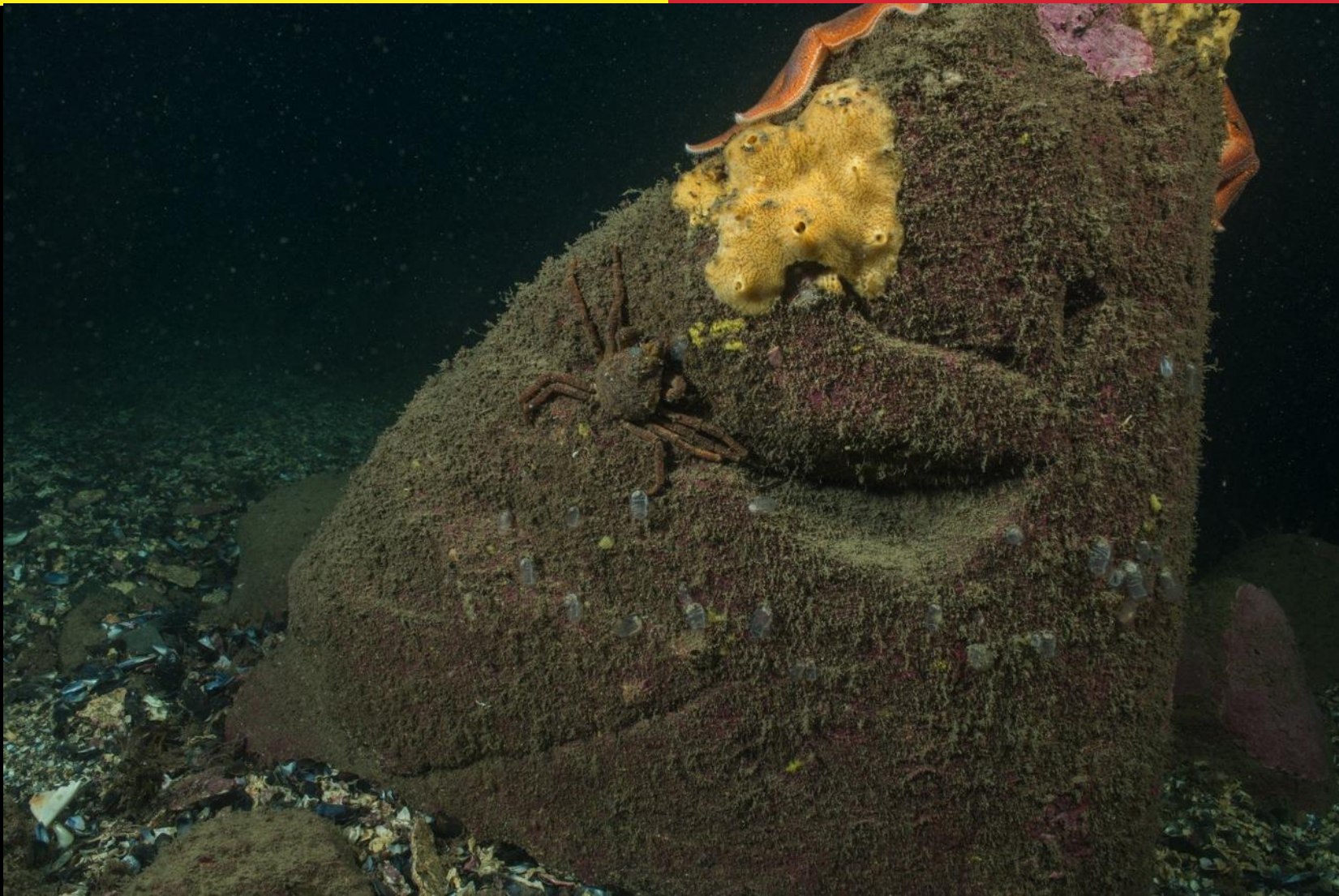






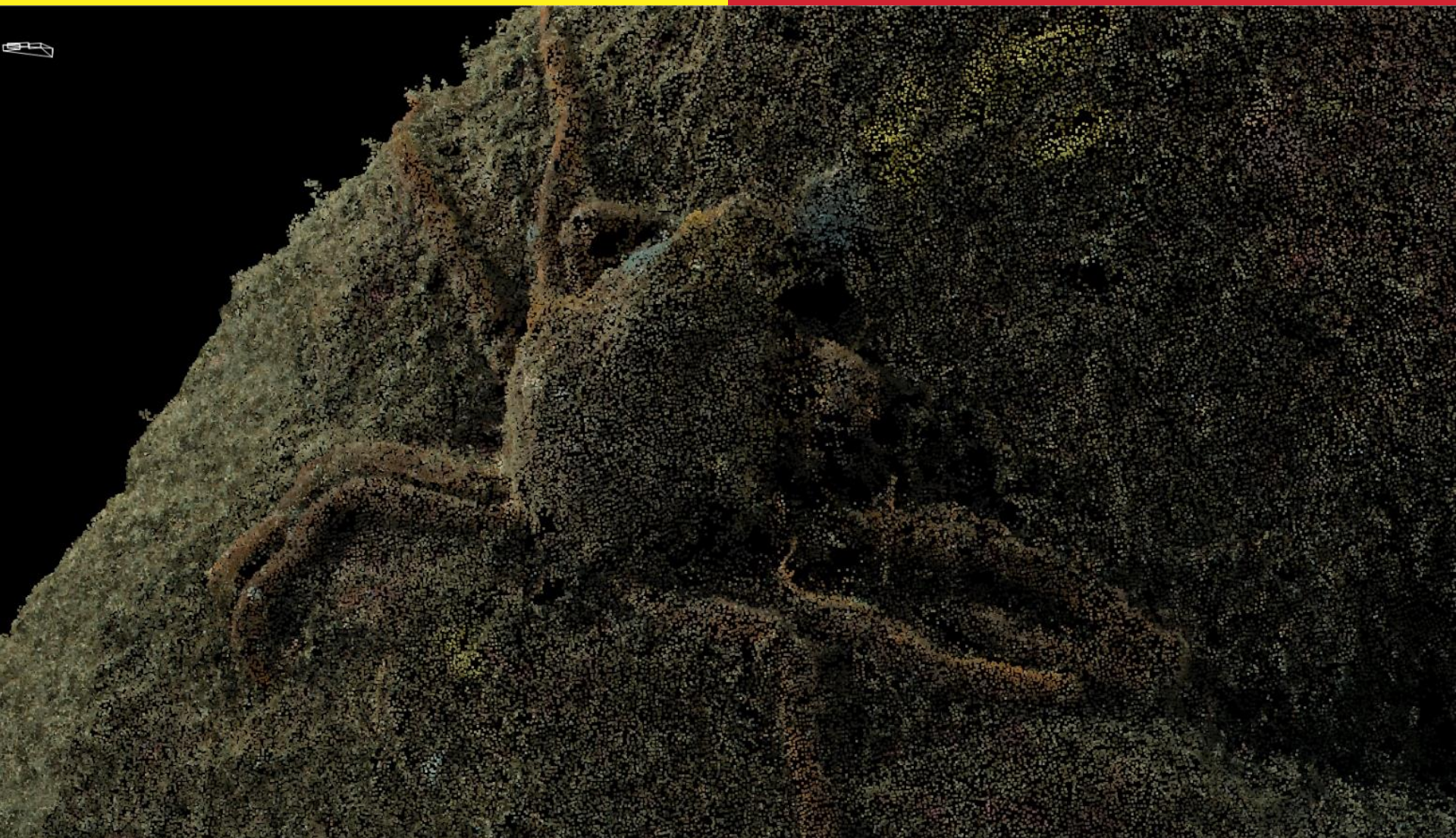
Textured 3D model













THANK YOU!

Ola Oskarsson
ola.oskarsson@mmt.se

Head Office:
MMT SWEDEN AB
Sven Källfelts Gata 11
SE-426 71 Västra Frölunda, Sweden
Phone: +46 (0)31 762 03 00

UK Office:
MMT (UK) LTD
2A Banbury Office Village, Noral Way
Banbury, Oxon, OX16 2SB, UK
Phone: +44 1295 817 740

Norway Office:
MMT NORWAY AS
Haraldsgata 190
5527 Haugesund, Norway
Phone: +46 (0)31 762 03 00

info@mmt.se