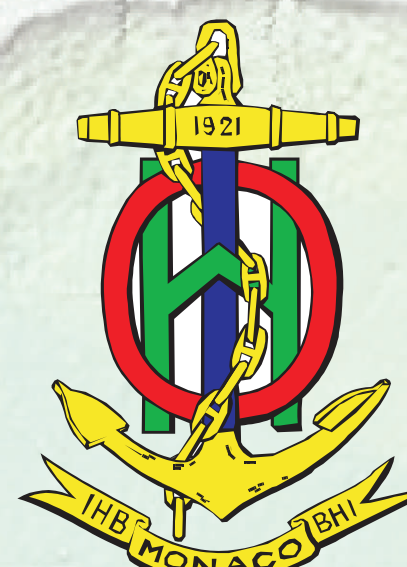


# Global Gridded Bathymetry Data



## General Bathymetric Chart of the Oceans (GEBCO)

Pauline Weatherall, GEBCO Digital Atlas Manger, British Oceanographic Data Centre (BODC), UK, Email: [paw@bodc.ac.uk](mailto:paw@bodc.ac.uk)

The GEBCO community consists of an international group of experts who work on the development of a range of bathymetric data sets and data products with the aim of providing the most authoritative, publicly-available bathymetry for the world's oceans.

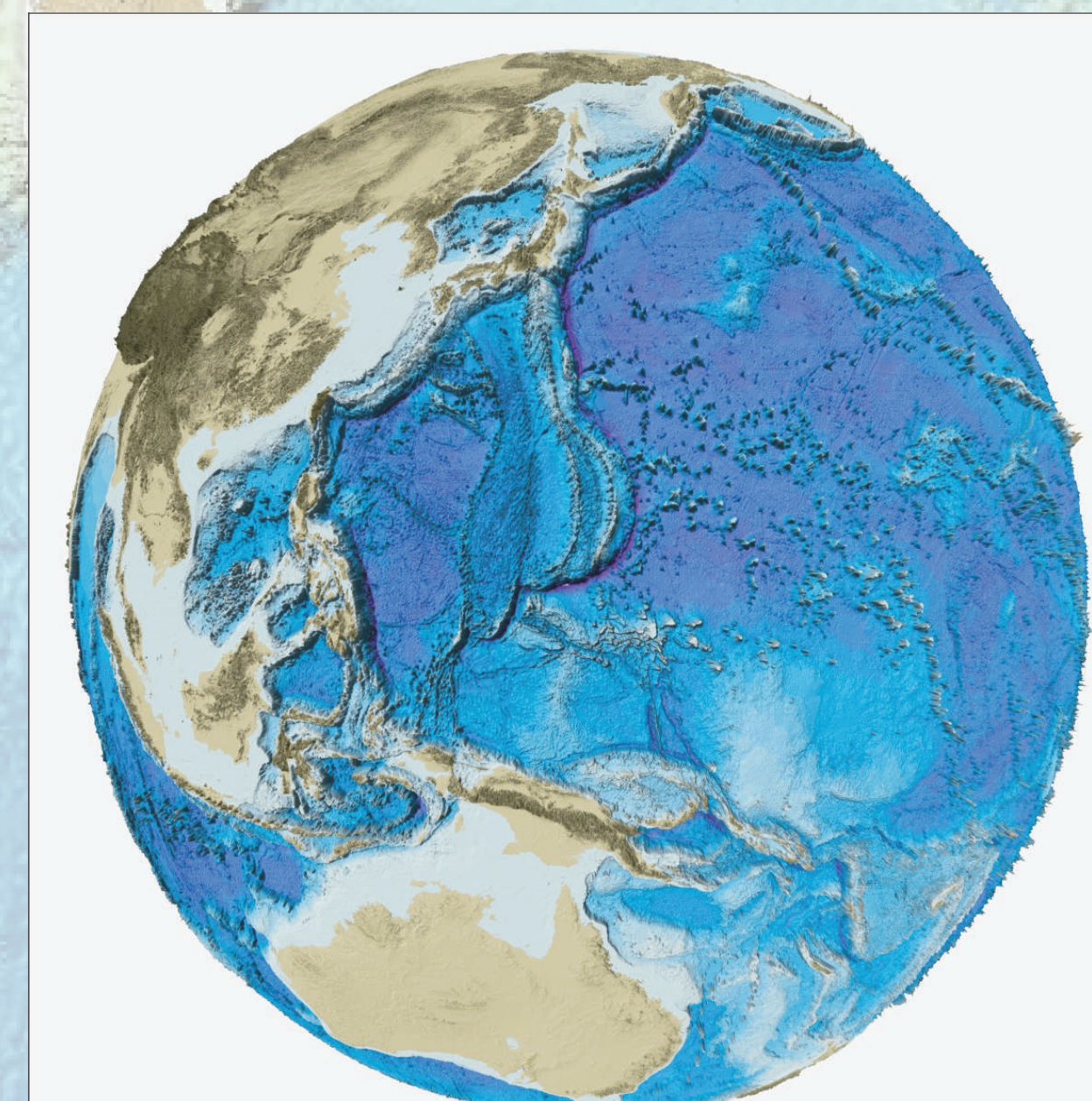
It operates under the joint auspices of the Intergovernmental Oceanographic Commission (IOC) and the International Hydrographic Organization (IHO).

### Bathymetric grids

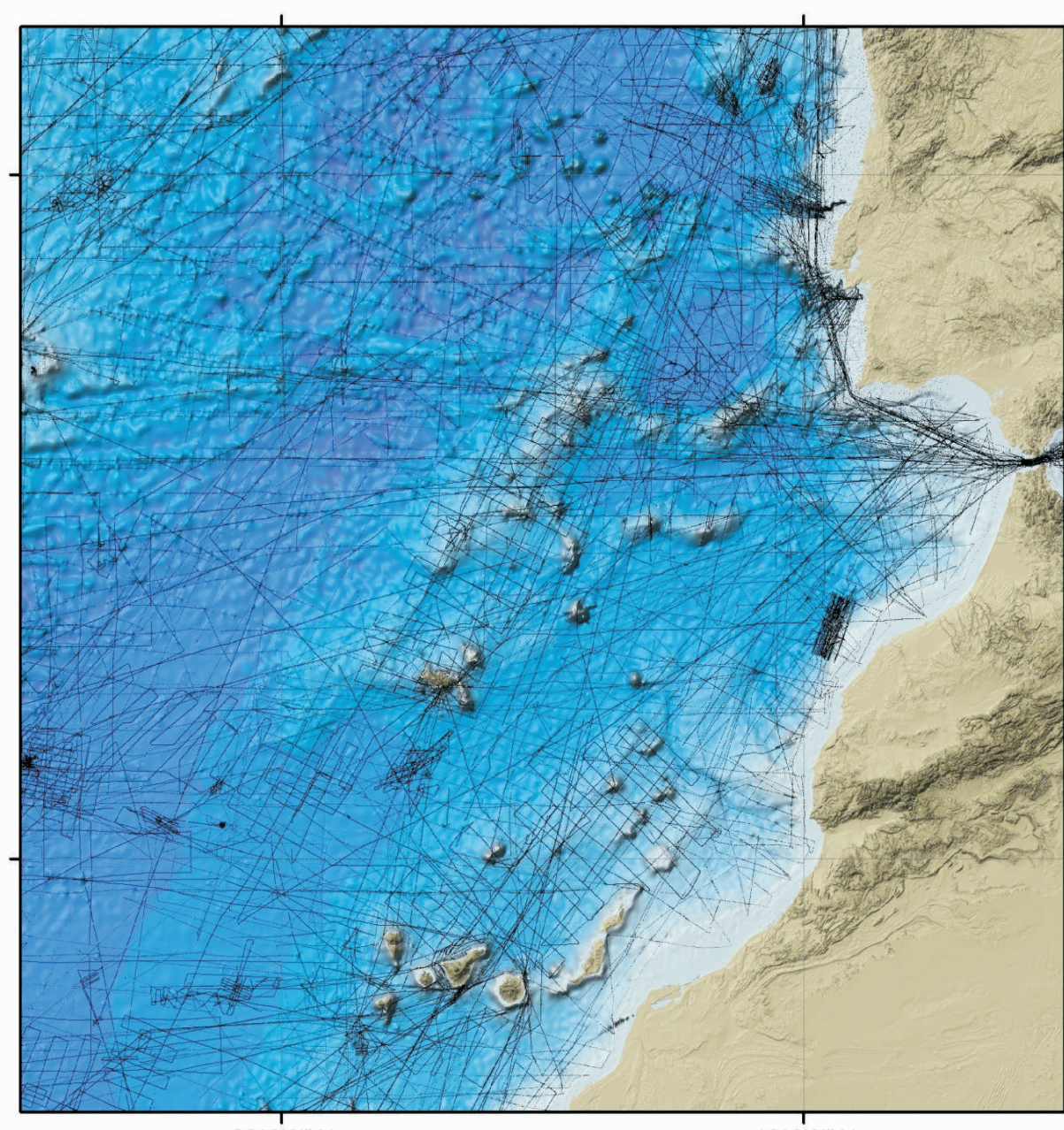
GEBCO's latest gridded bathymetric data set is the GEBCO\_08 Grid. This is a global terrain model at 30 arc-second intervals. The bathymetric

portion of the grid is largely based on a database of ship track soundings with predicted depths between the sounding points guided by satellite-derived gravity data. Some areas are based on existing bathymetric grids. Land data are largely taken from the SRTM30 elevation model.

A 'Source Identifier' (SID) grid has been released. This data set identifies which cells in the GEBCO\_08 Grid are based on soundings or taken from grids and which are interpolated.



Bathymetry data from the GEBCO\_08 Grid

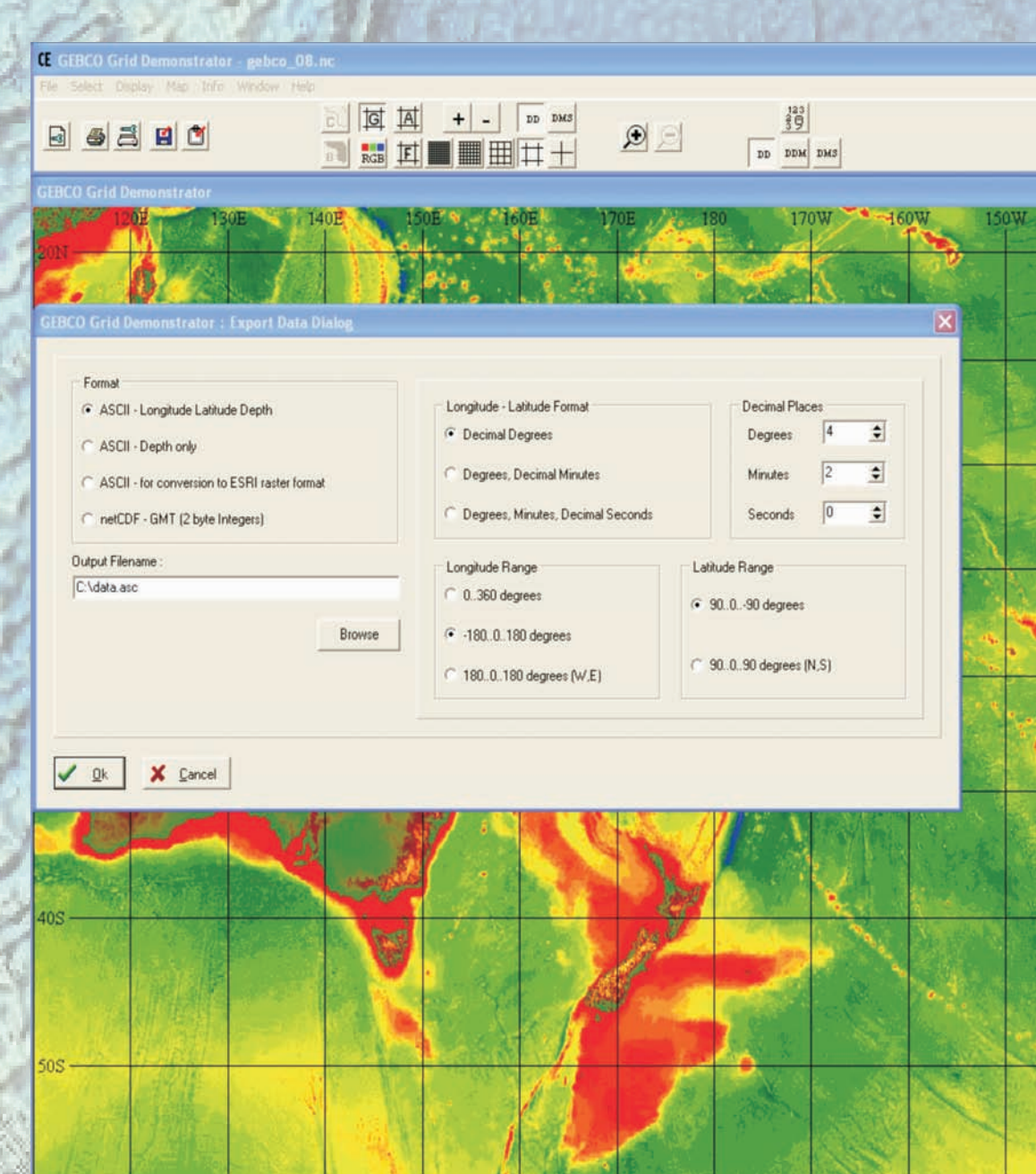


The SID grid (shown in black) indicates which cells in the GEBCO\_08 Grid are based on soundings and which have been interpolated with the help of satellite-derived gravity data.

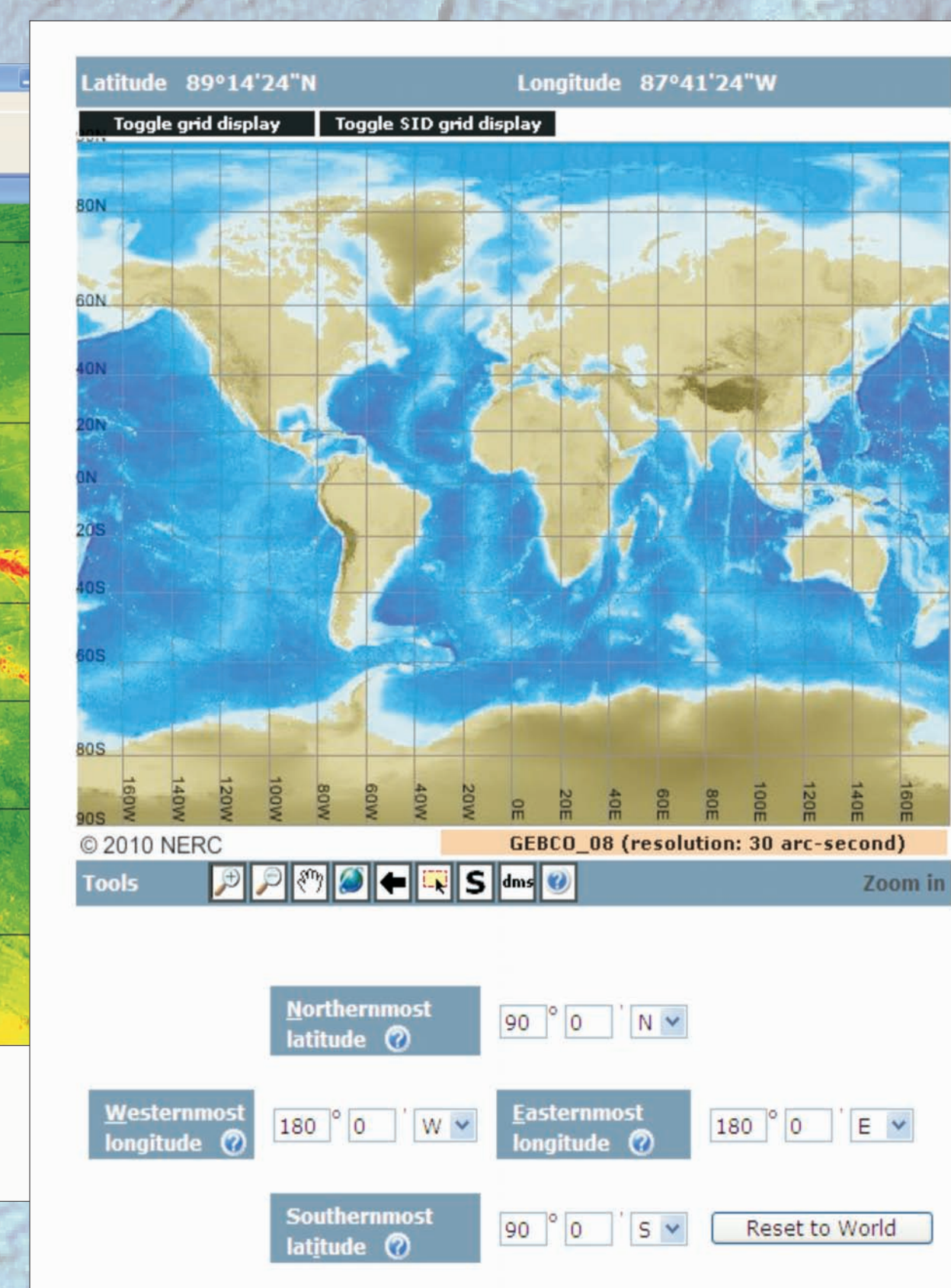
### Data delivery

Through a map interface, the grids are available to download from the web. Select to download the global grids or data for a user-defined area. Software for viewing and accessing the data sets is also available for download.

The grids are also included in the GEBCO Digital Atlas DVD.

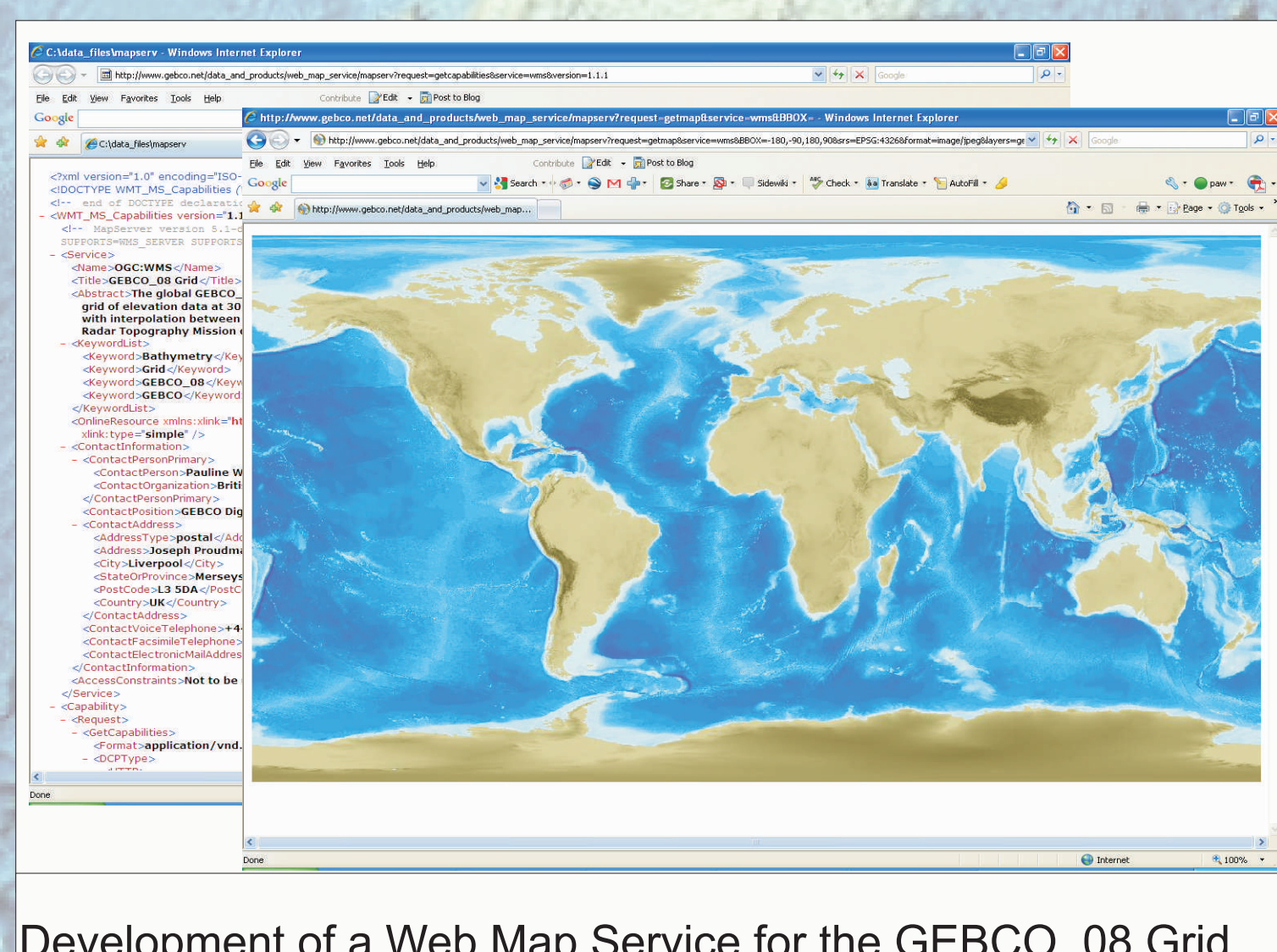


Through the software interface, view and access GEBCO's gridded data sets in netCDF and ASCII formats.



Web map interface for selecting data from GEBCO's gridded bathymetric data sets for download. Either define the area by drawing a

### Web services and data set interoperability development work



Development of a Web Map Service for the GEBCO\_08 Grid

To help with interoperability between data sets, work is underway to develop a version of the GEBCO\_08 grid which uses climate and forecast (CF) metadata conventions. These conventions have been designed to promote the processing and sharing of netCDF files and define metadata that provide a description of what the data in each variable represents, and their spatial properties.

A Web Map Service is also being developed for delivering imagery from the GEBCO\_08 Grid.

### Find out more

GEBCO's web site: [www.gebco.net](http://www.gebco.net)

GEBCO's gridded bathymetry data sets: [www.bodc.ac.uk/data/online\\_delivery/gebco/](http://www.bodc.ac.uk/data/online_delivery/gebco/)

GEBCO Digital Atlas: [www.gebco.net/data\\_and\\_products/gebco\\_digital\\_atlas](http://www.gebco.net/data_and_products/gebco_digital_atlas)

On behalf of the GEBCO community, GEBCO's bathymetric data sets are maintained and made available by the British Oceanographic Data Centre (BODC).