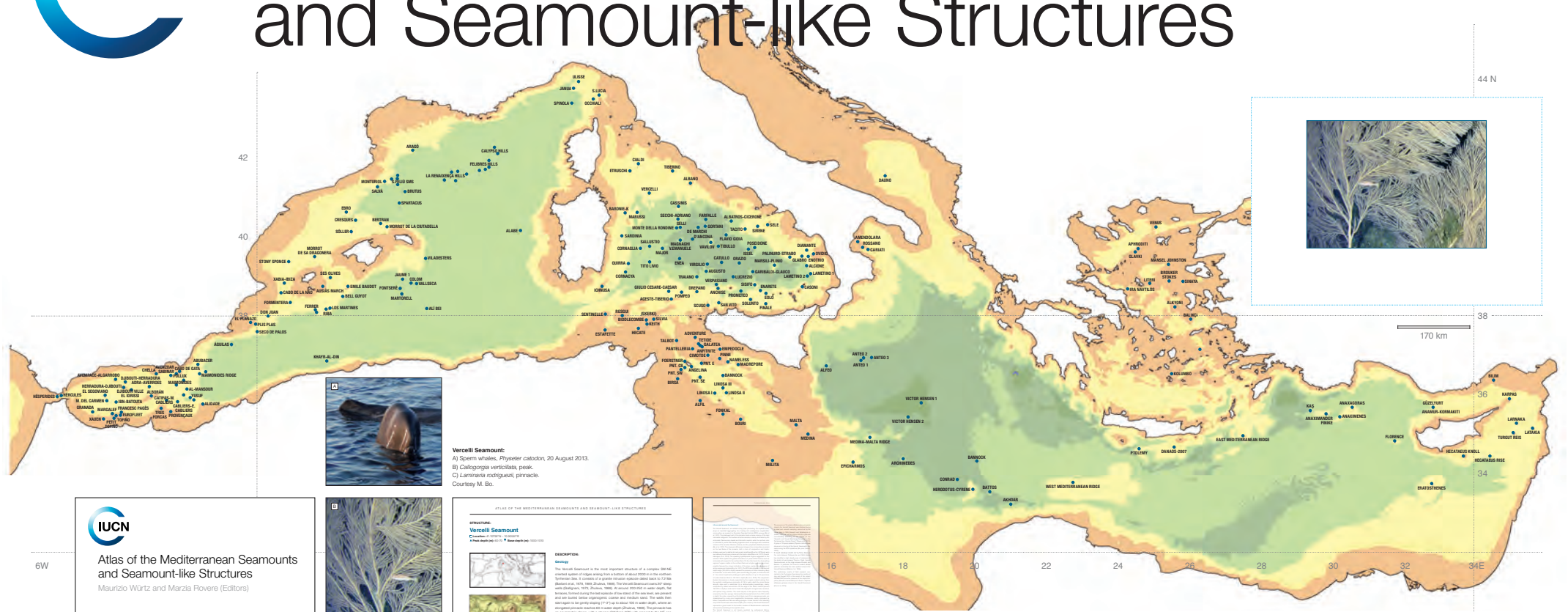
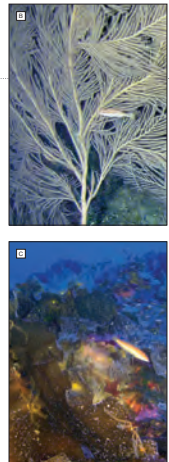
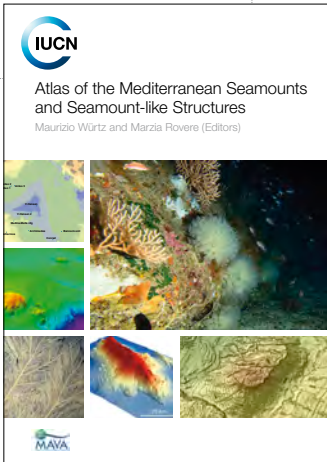




Atlas of the Mediterranean Seamounts and Seamount-like Structures



Verrelli Seamount:
A) Sperm whales, *Physeter catodon*, 20 August 2013.
B) *Calligorgia verticillata*, peak.
C) *Laminaria rodriguesi*, pinnacle.
Courtesy M. Bo.



ATLAS OF THE MEDITERRANEAN SEAMOUNTS AND SEAMOUNT-LIKE STRUCTURES

STRUCTURE
Verrelli Seamount
Coordinates: 42°00'N, 16°00'E
Depth: 1000 m

DESCRIPTION
Seamount
The Verrelli Seamount is the most important structure of a complex that includes several other seamounts and seamount-like structures in the Verrelli Seamount area. It is located in the eastern part of the Verrelli Seamount, 17 km from the island of Sicily. The Verrelli Seamount is a volcanic structure that was formed during the Miocene. It is a conical structure that rises from the seafloor to a depth of 1000 m. The Verrelli Seamount is a volcanic structure that was formed during the Miocene. It is a conical structure that rises from the seafloor to a depth of 1000 m. The Verrelli Seamount is a volcanic structure that was formed during the Miocene. It is a conical structure that rises from the seafloor to a depth of 1000 m.

Conservation in the Mediterranean :
Developed by an international group of experts, a first new tool for decision-making with extensive references and upgradable, on line.

Würtz, M. & M. Rovere (eds) (2015).
Atlas of the Mediterranean Seamounts and Seamount-like Structures. Gland, Switzerland and Málaga, Spain: IUCN. 276 pp.

ISBN: 978-2-8317-1750-0
DOI: <http://dx.doi.org/10.2305/IUCN.CH.2015.07.en>
<https://portals.iucn.org/library/node/45816>

