

The North Atlantic Data Portal – a prototype

A current approach to improving marine geophysical data discovery & access

Jennifer Jencks

National Oceanic and Atmospheric Administration
National Centers for Environmental Information
Boulder, Colorado USA

The Atlantic Seabed Mapping International Working Group

(ASMIWG) was established in December 2014 by the Tri-Partite Galway Statement Implementation Committee to identify the steps required to implement a seabed mapping strategy to underpin the objectives of the Galway Statement. This strategy includes improving data sharing, discovery, and access to ultimately allow potential mapping targets to be designated. The ASMIWG recommends that all bathymetric data that currently exists (and newly collected data) be identified and made accessible to the public through the establishment of a North Atlantic Data Portal.

Galway Statement on Atlantic Ocean Cooperation

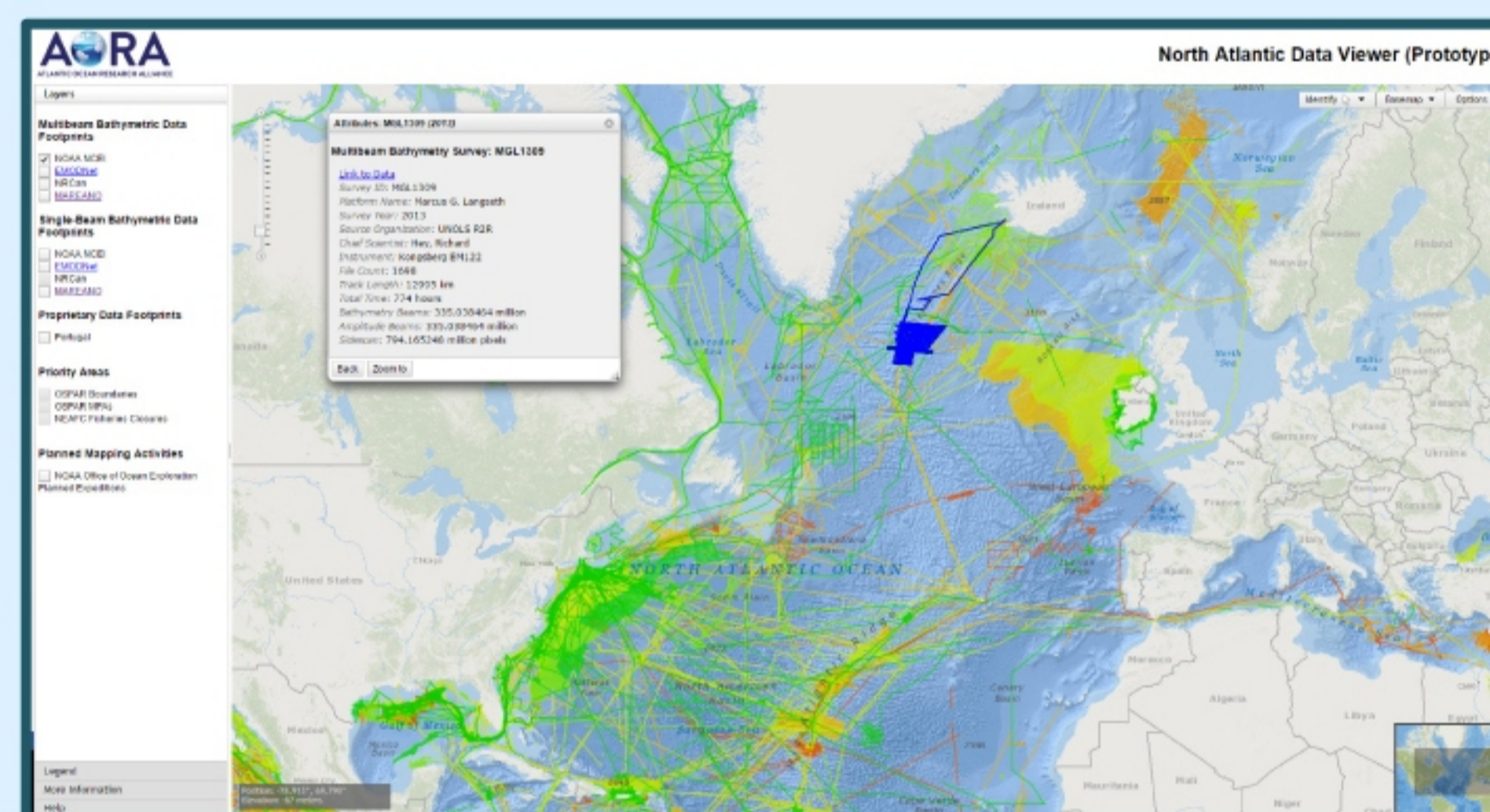
The Galway Statement was signed by the European Union, Canada, and the United States in May 2013 and has led to a new international mapping coordination effort. The intent of the Galway Statement is to foster cooperation and increase knowledge of the Atlantic Ocean through improved coordination and collaboration in ocean observation efforts with goals to improve ocean health and stewardship and promote sustainable management of its resources. This agreement aims to connect the ocean observation efforts of the three partners.



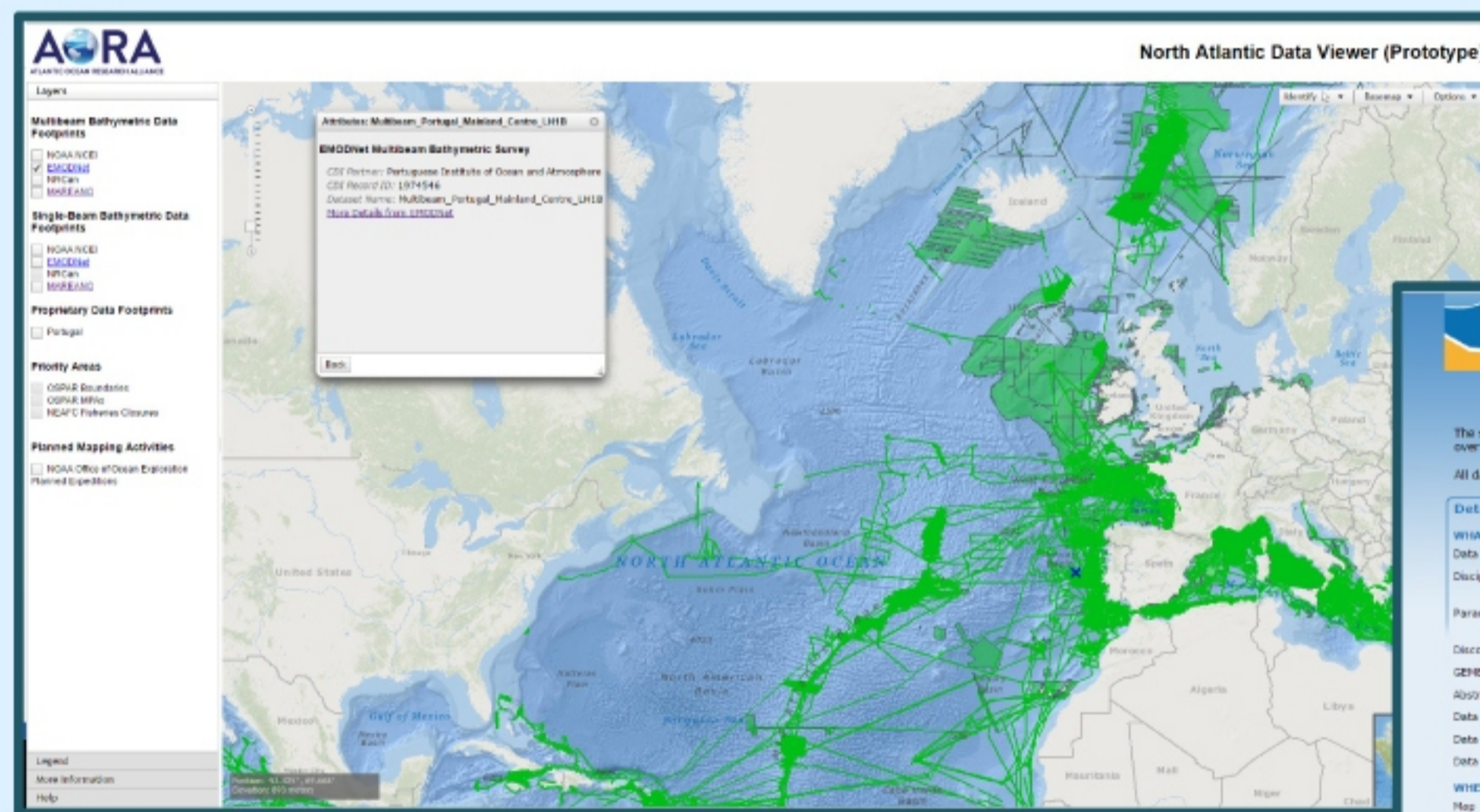
Data Contributors

NCEI utilizes geospatial services to improve discovery and access to data. The North Atlantic Data Portal incorporates a number of services, or 'building blocks', some of which are hosted at NCEI and many from other organizations, resulting in an easy to use geographical interface to display, select, and download many different types of data.

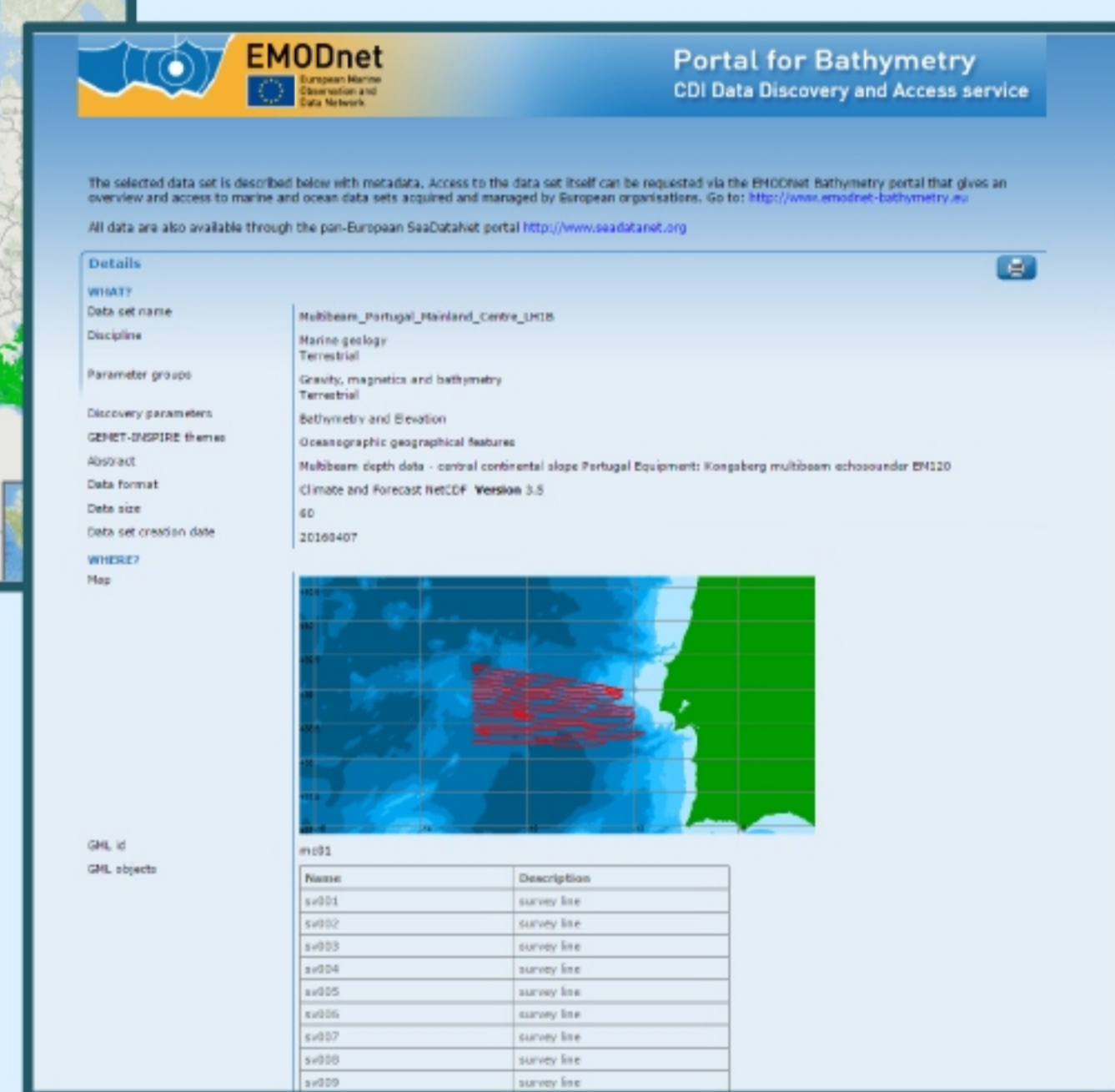
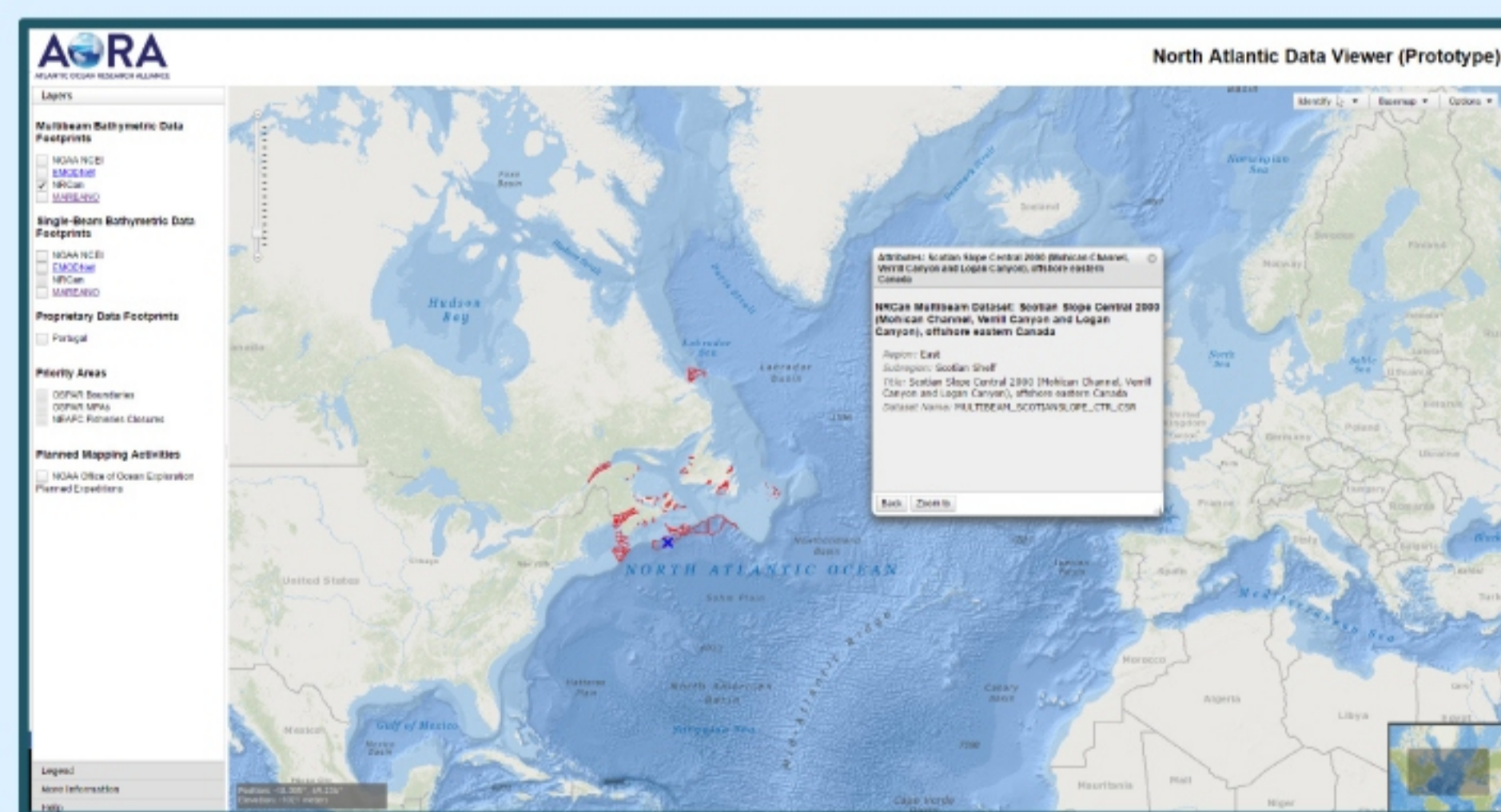
IHO's DCDB's (co-located at NOAA's NCEI) multibeam bathymetric holdings. The user can select a trackline of interest, learn about that dataset from attribute information that's been populated by standard metadata, and directly download the dataset.



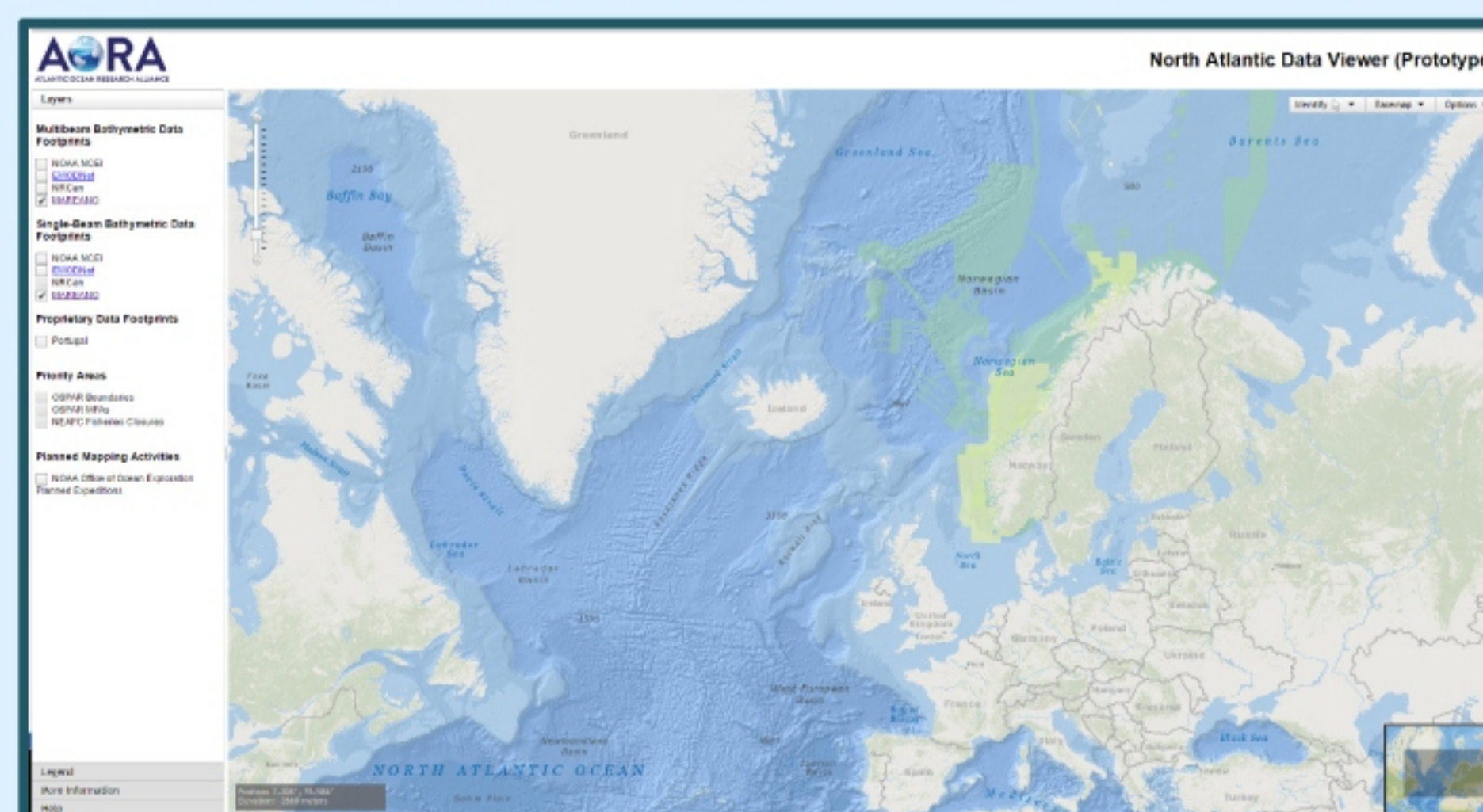
The European Marine Observation and Data Network (EMODnet) multibeam bathymetric data holdings. The user can select a trackline/polygon, learn about that dataset, and link to EMODnet's Portal for Bathymetry to learn even more information and directly download the dataset.



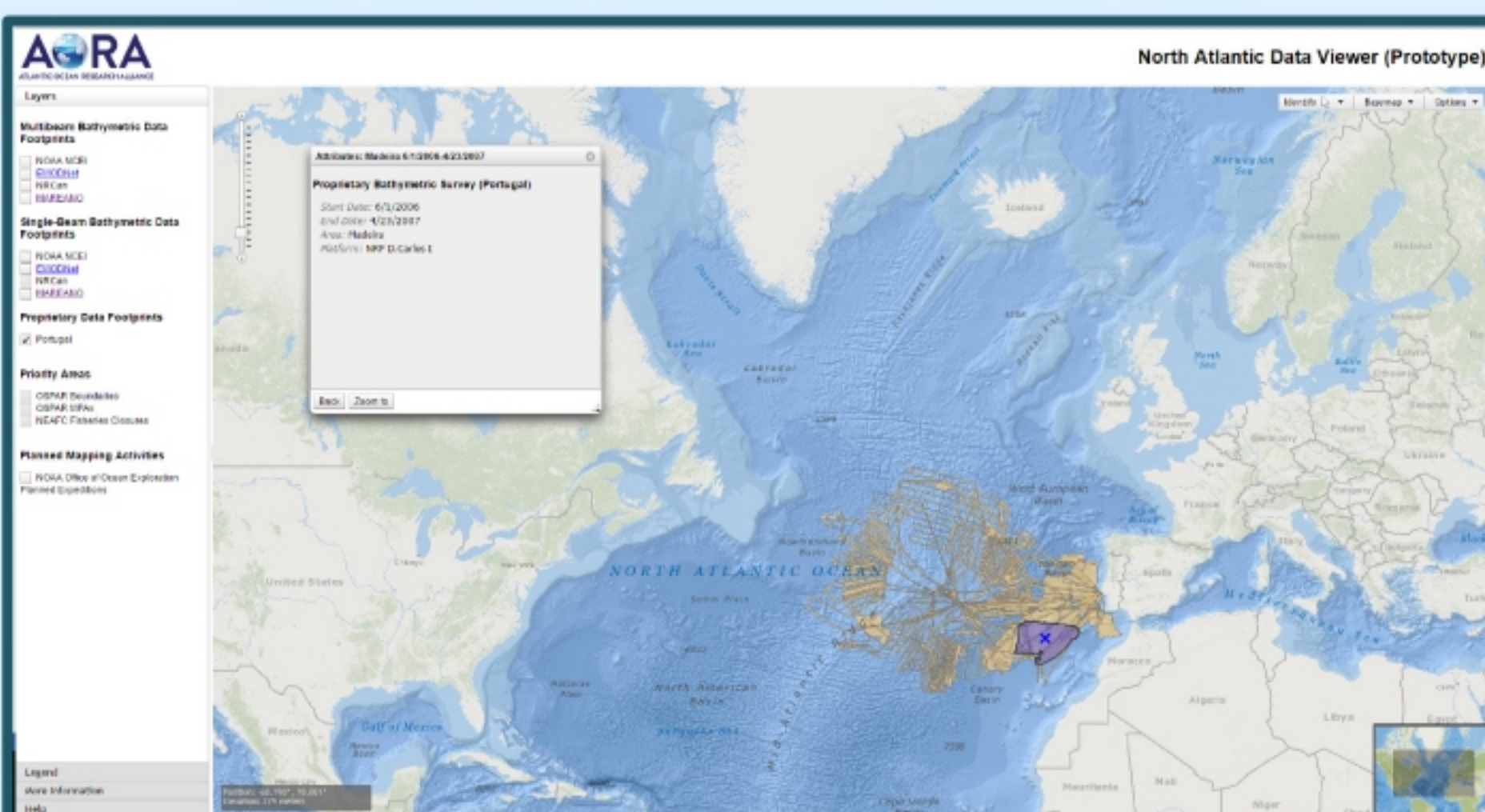
Public multibeam bathymetric data holdings from Natural Resources Canada. The user can select a trackline/polygon of interest and learn more information about that dataset.



Public multibeam bathymetric data holdings from Norway's MAREANO project.

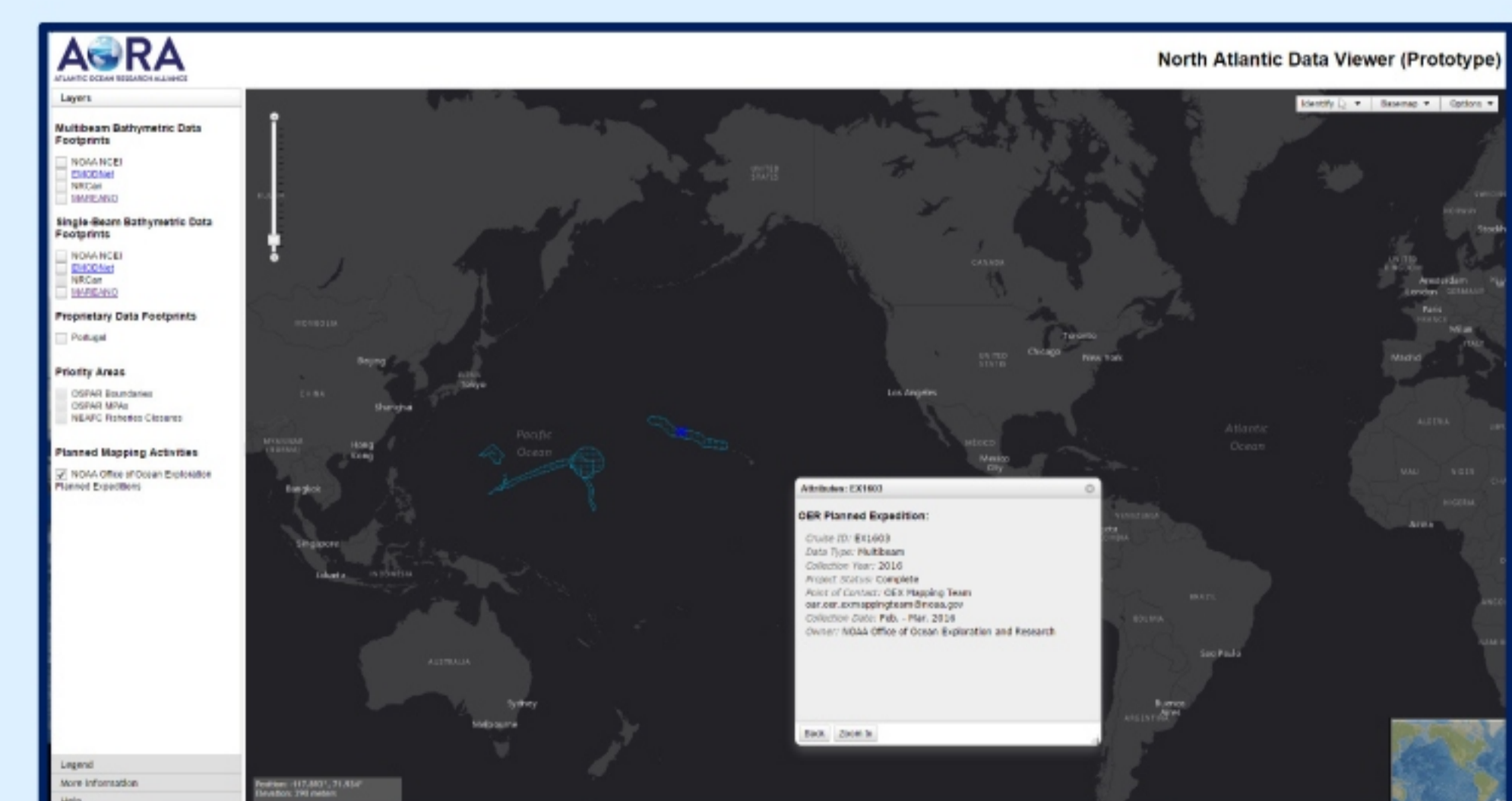


Proprietary bathymetric data holdings from Portugal.



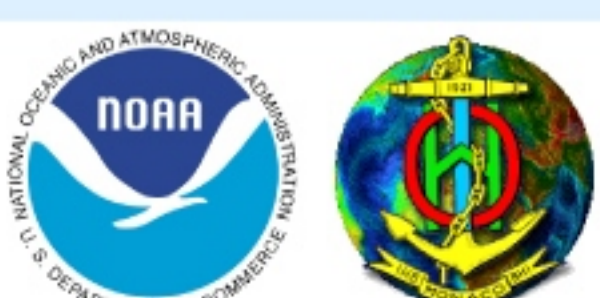
The North Atlantic Data Portal is envisioned to be a one-stop-shop for planned survey and bathymetric data discovery, contribution, and download. The prototype has been stood up by leveraging the International Hydrographic Office's Data Center for Digital Bathymetry (IHO DCDB) infrastructure, which is co-located at NOAA's National Centers for Environmental Information (NCEI) and ultimately could allow the user community to:

1. Locate and access **publicly available data** in the North Atlantic from participating agencies using a single web portal. This portal would display all data holdings from participating institutes by integrating their existing web map services.
2. Identify locations of **proprietary data** in the North Atlantic from participating agencies and provide contact information, allowing further inquiry about potential data access using the same single portal.
3. Stay informed about all proposed and planned upcoming surveys in a given area providing the opportunity for potential collaboration.
4. Easily contribute new data to the IHO DCDB.



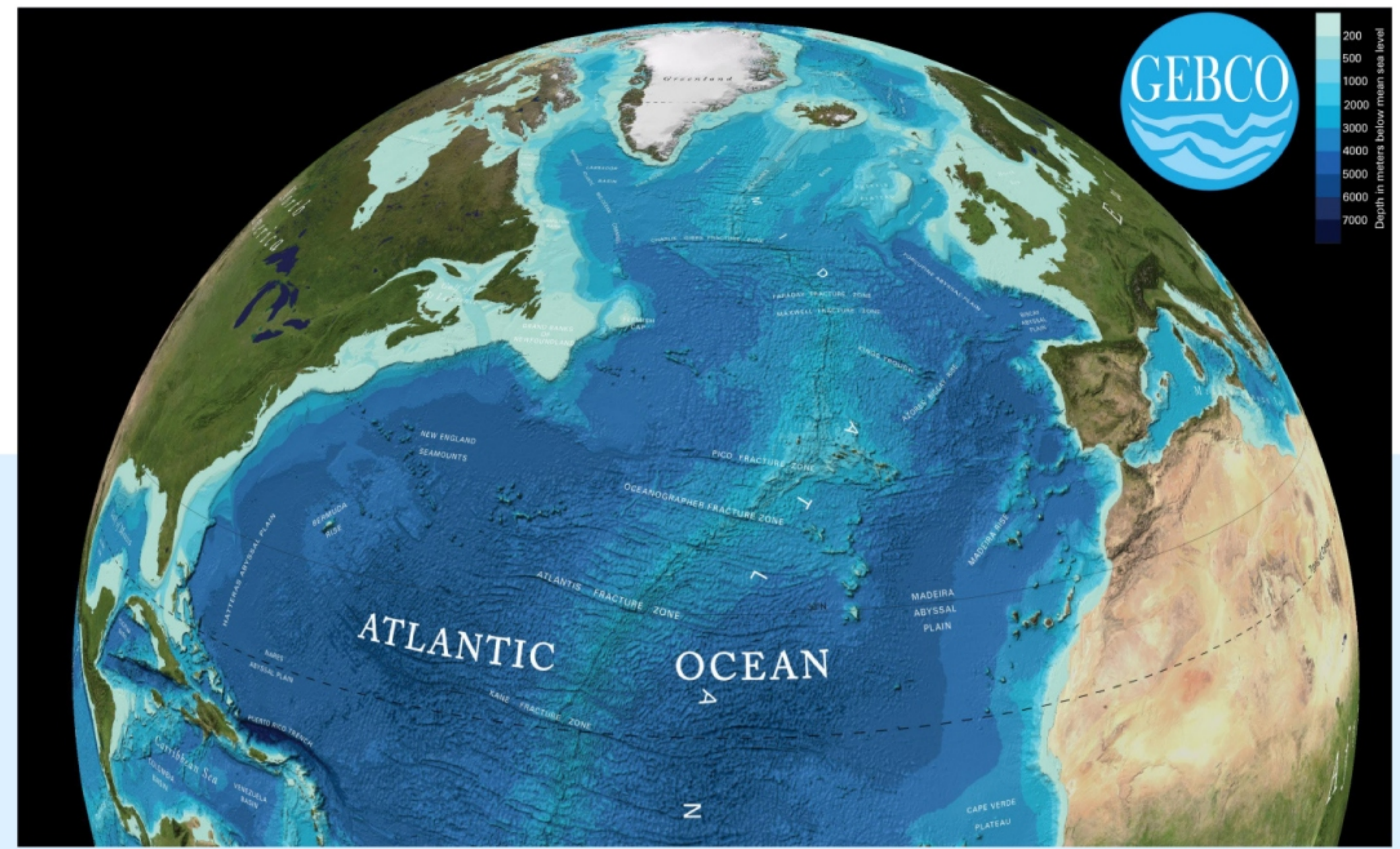
Planned mapping activities for NOAA's Office of Ocean Exploration.

Working together, we can ensure that valuable data are made available to the broadest community.

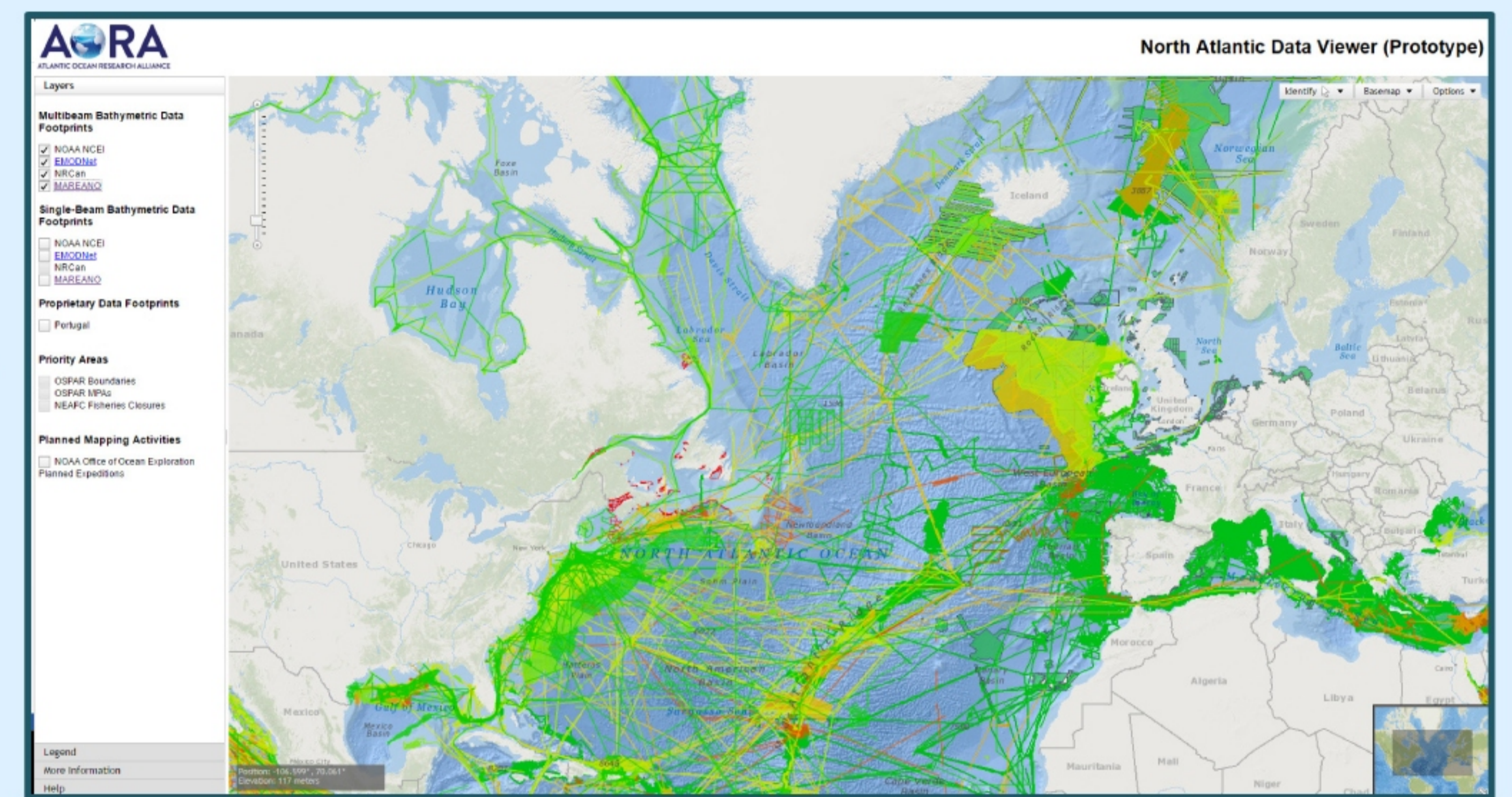


The International Hydrographic Organization (IHO) participates in this effort and NOAA's NCEI hosts the IHO Data Center for Digital Bathymetry on behalf of the IHO Member Countries. The viewer was created by staff from NCEI and takes advantage of the software framework and technology developed for other NCEI map applications.

The ASMIWG works closely with the Atlantic Ocean Research Alliance - Coordination and Support Action (AORA-CSA, BG14), which includes Seabed Mapping as a priority area for Research Cooperation.



The North Atlantic Data Portal



http://maps.ngdc.noaa.gov/viewers/north_atlantic/