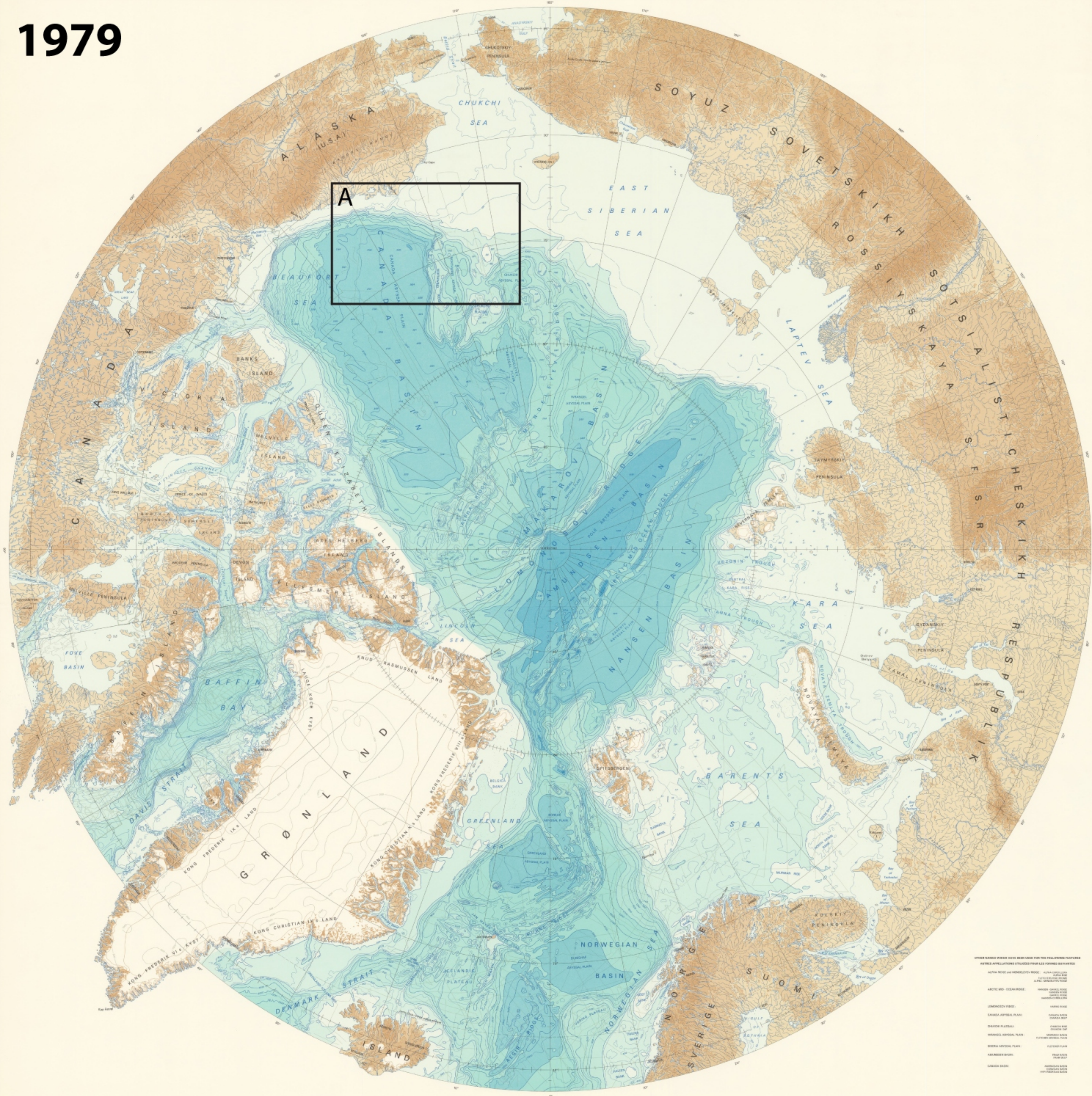


1979



GENERAL BATHYMETRIC CHART OF THE OCEANS (GEBCO)
 SERIE CRÉÉE PAR S.A.S. LE PRINCE ALBERT II DE MONACO EN 1980
 Série créée par S.A.S. LE PRINCE ALBERT II DE MONACO EN 1980

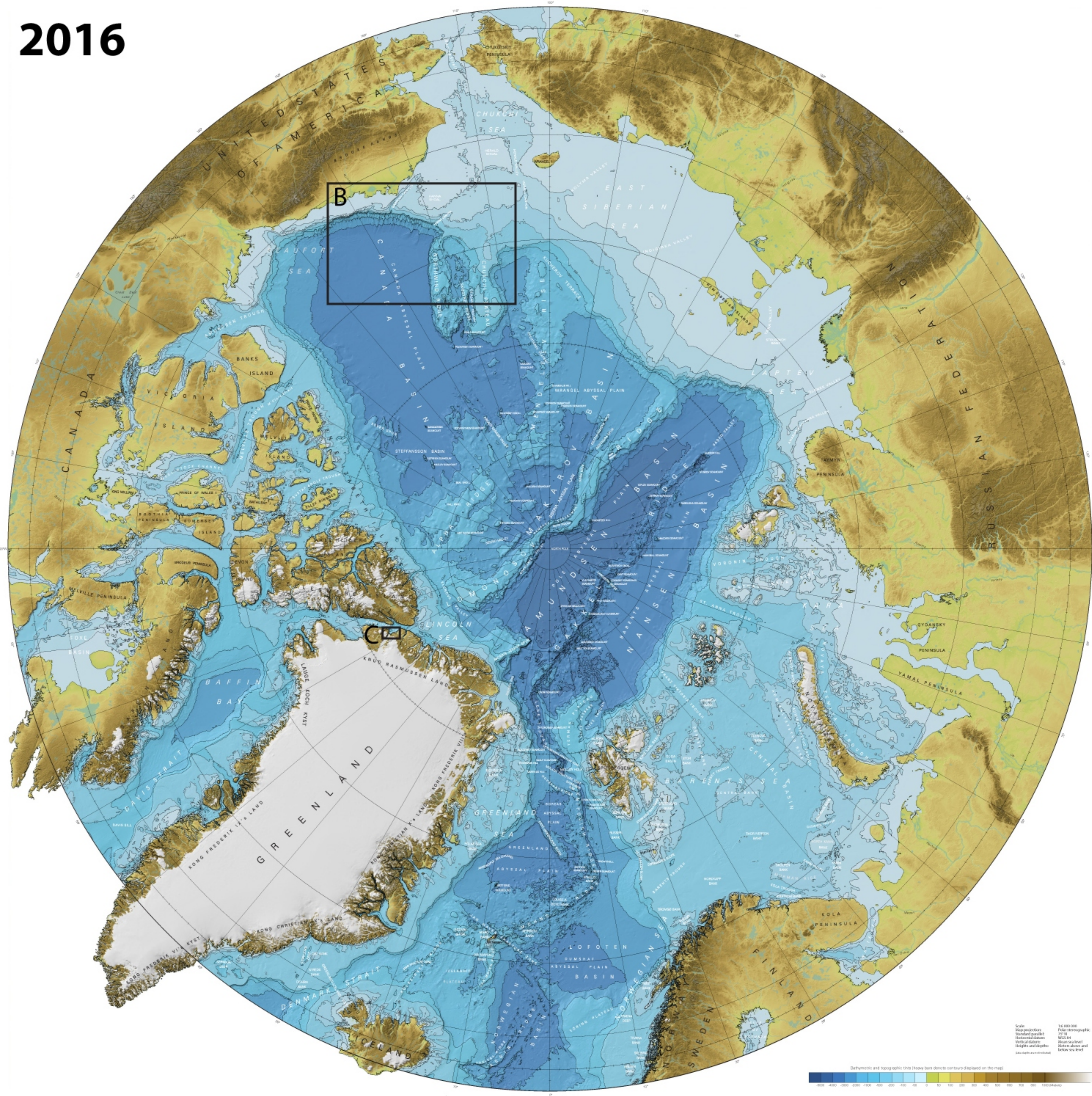
CARTE GÉNÉRALE BATHYMETRIQUE DES OcéANS (GEBCO)
 Série créée par S.A.S. LE PRINCE ALBERT II DE MONACO EN 1980
 Série créée par S.A.S. LE PRINCE ALBERT II DE MONACO EN 1980

INTERNATIONAL HYDROGRAPHIC ORGANIZATION
 ORGANISATION HYDROGRAPHIQUE INTERNATIONALE

INTERNATIONAL OCEANOGRAPHIC COMMISSION
 COMMISSION OcéANOGRAPHIQUE INTERNATIONALE

5/17

2016



THE INTERNATIONAL BATHYMETRIC CHART OF THE ARCTIC OCEAN (IBCAO)

Map Resolution and Coverage
 The IBCAO is an extension of the GEBCO 30-second bathymetric chart of the world ocean (GEBCO). The Arctic Ocean region was mapped to a resolution of 15 x 15 m. The IBCAO covers the entire Arctic Ocean region, including the Kara Sea, Laptev Sea, East Siberian Sea, Chukchi Sea, Beaufort Sea, and the Canadian Basin. The IBCAO is the most complete bathymetric chart of the Arctic Ocean to date.

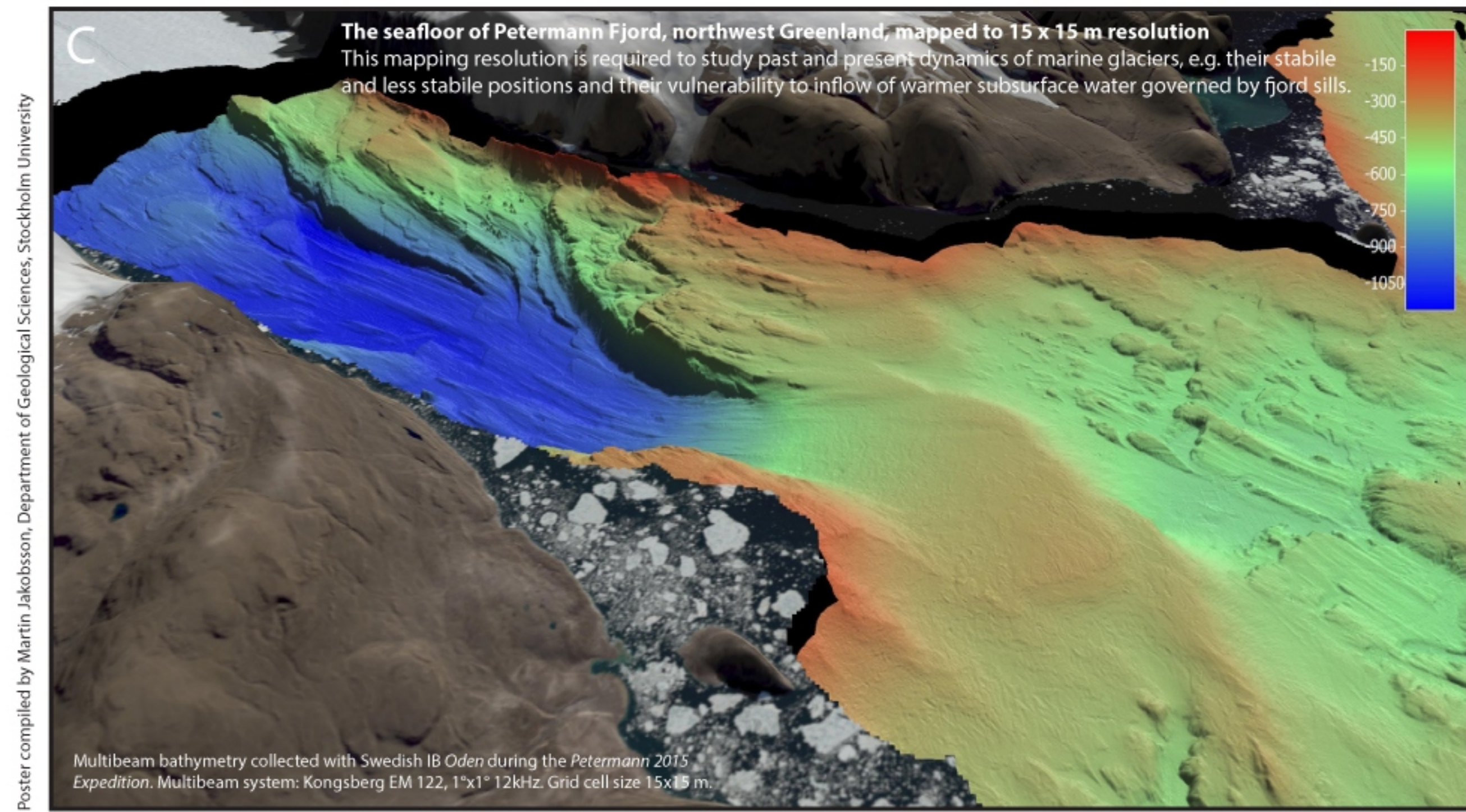
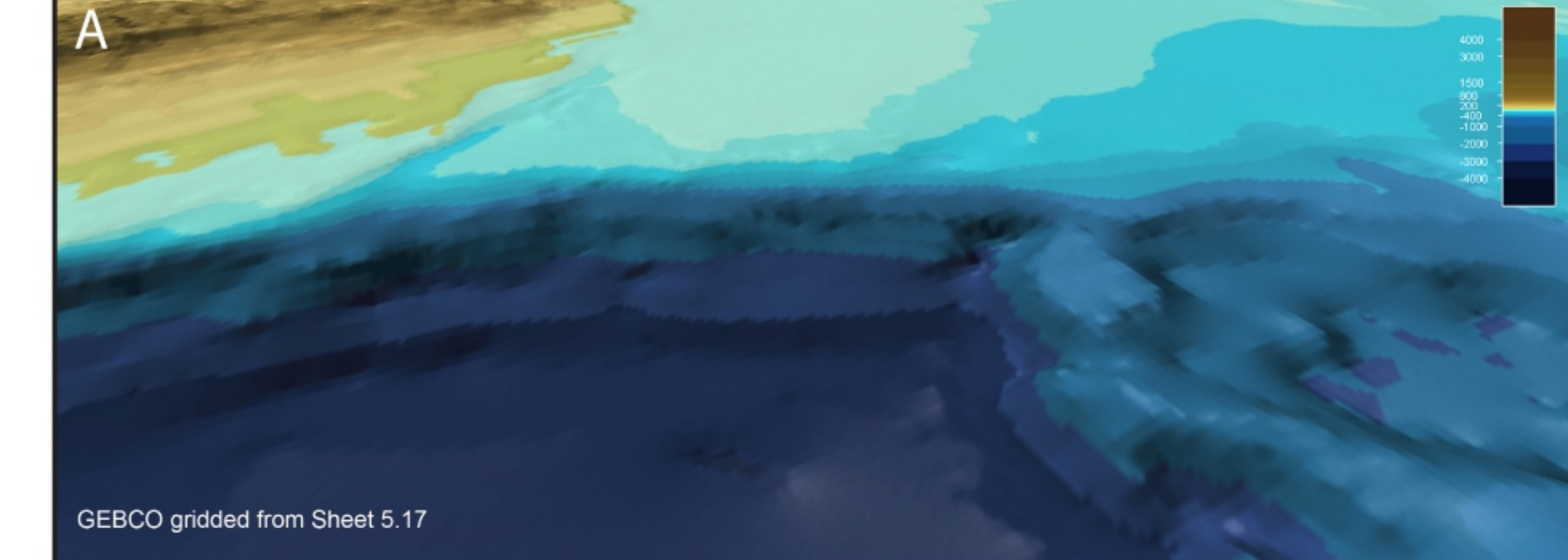
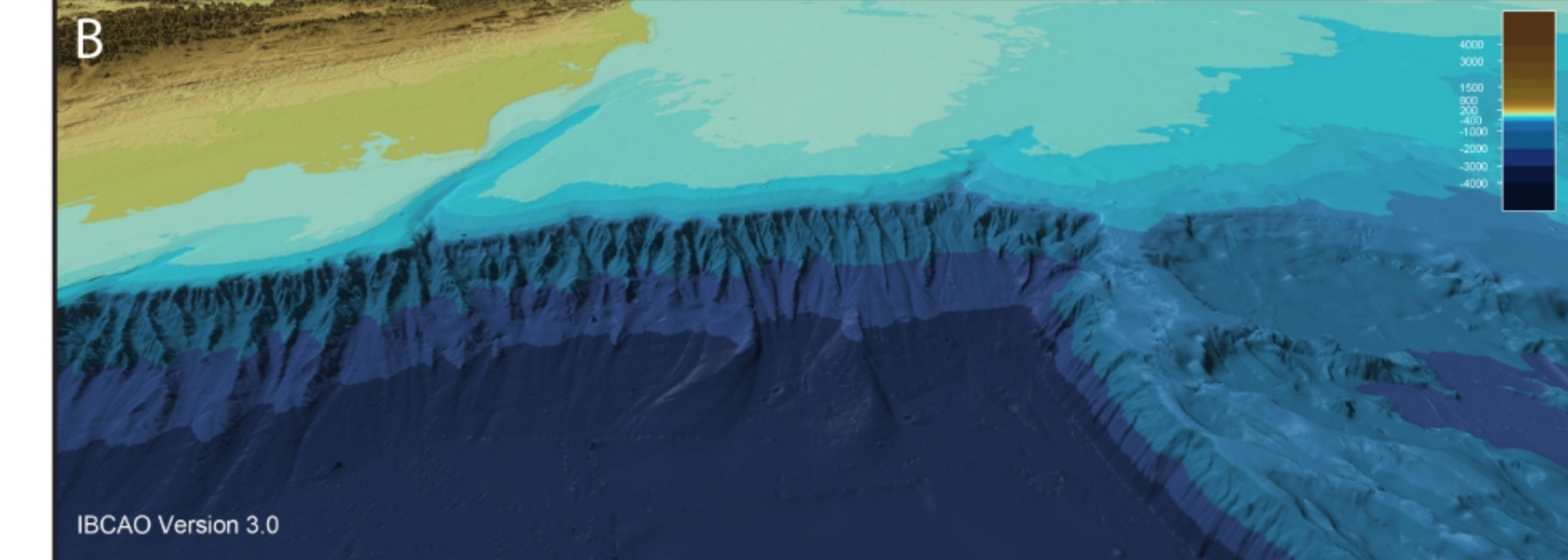
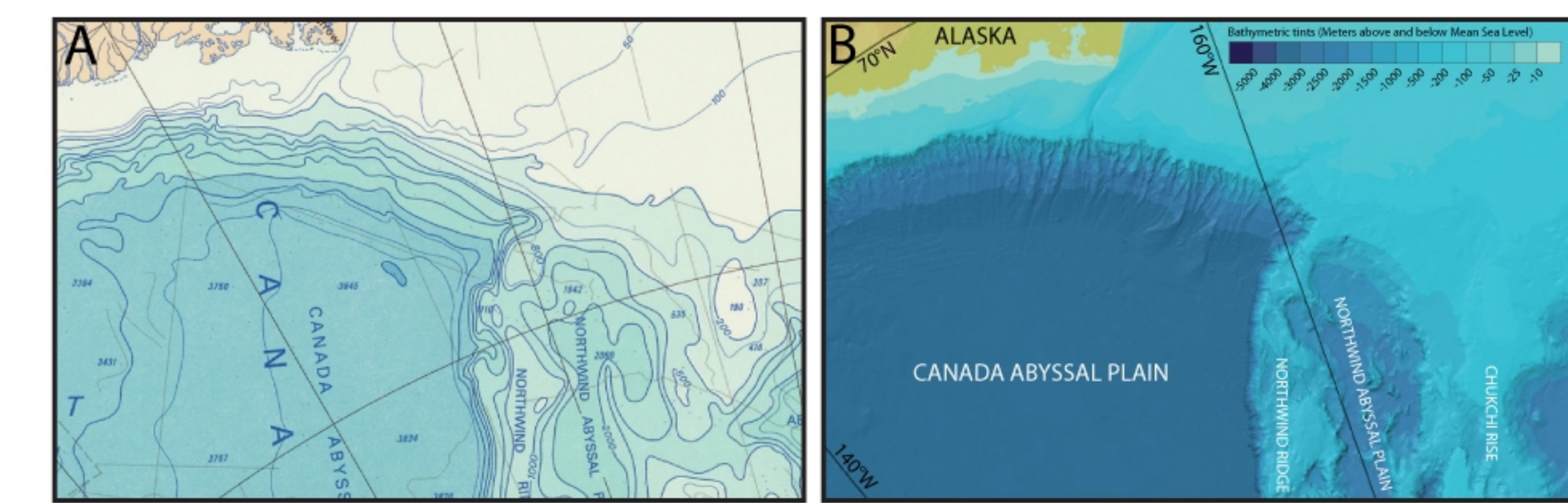
Map Resolution and Coverage
 The IBCAO is an extension of the GEBCO 30-second bathymetric chart of the world ocean (GEBCO). The Arctic Ocean region was mapped to a resolution of 15 x 15 m. The IBCAO covers the entire Arctic Ocean region, including the Kara Sea, Laptev Sea, East Siberian Sea, Chukchi Sea, Beaufort Sea, and the Canadian Basin. The IBCAO is the most complete bathymetric chart of the Arctic Ocean to date.

5/17

Arctic Ocean Mapping



From Fram 1893–1896 to International Bathymetric Chart of the Arctic Ocean (IBCAO) 2016



Poster compiled by Martin Jacobsson, Department of Geological Sciences, Stockholm University