

GEBCO_08 Grid - artifact in the North Atlantic off Vigo

There is an anomalous ‘trench-like’ feature shown in the GEBCO_08 Grid in the region off the coast of Vigo in Northern Spain (42°N $9^{\circ} 30'\text{W}$). This is shown in Figure 1 below.

This is an artifact created during the generation of the grid, caused by anomalous soundings along a ship track.

The GEBCO_08 Grid has been generated by combining measured depth data (collected by ships) with satellite-derived depth estimates in regions where measured data are not available.

The grid is accompanied by a Source Identifier (SID) Grid. This shows which cells in the GEBCO_08 Grid have been constrained by bathymetry data and which have been interpolated.

Figure 2 shows data from the SID Grid (shown as black dots/lines) overlain on the GEBCO_08 Grid.

Please see the documentation that accompanies the data set for more information on the generation of the GEBCO_08 Grid.

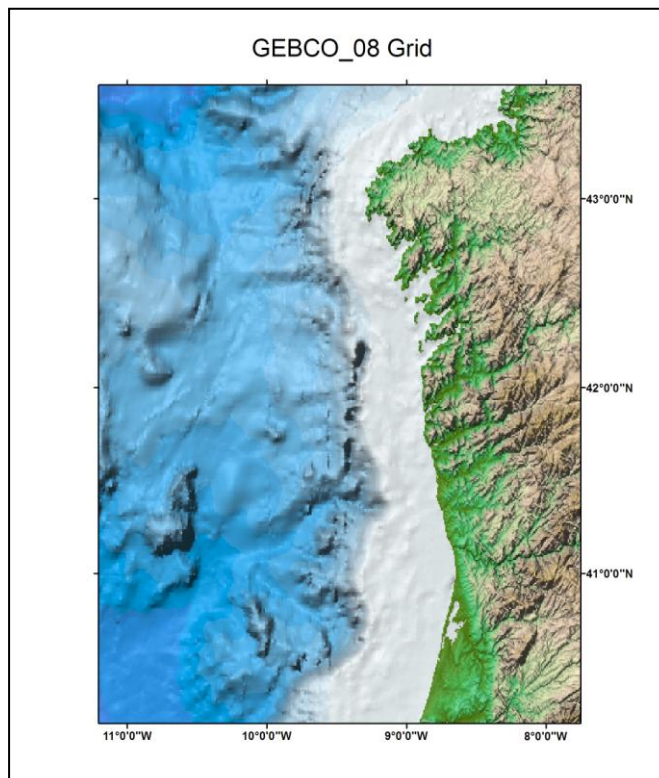


Figure 1

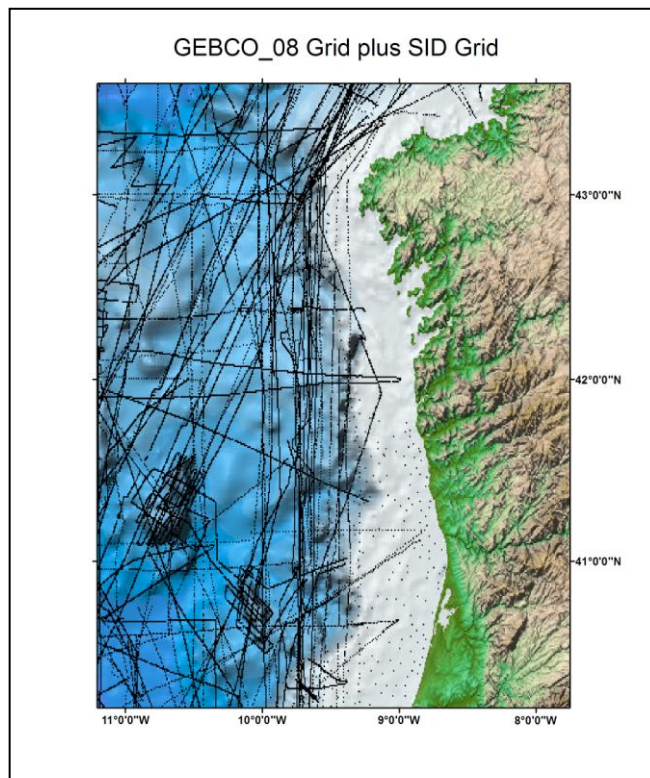


Figure 2