

GEBCO_08 Grid - artifacts in some shallow water areas off the Bahamas

There are anomalous deep water areas shown in the GEBCO_08 Grid for some shallow water areas in the Northwest Atlantic Ocean off the Bahamas, around 77°W; 25°N. This is shown in Figure 1 below. The deeper areas are shown in yellow, green and blue.

These deeps are artifacts created during the generation of the grid.

The GEBCO_08 Grid has been generated by combining measured depth data (collected by ships) with satellite-derived depth estimates in regions where measured data are not available. For these anomalous deep regions, as shown in Figure 1, the depth values in the grid have been interpolated and are not based on actual soundings.

The GEBCO_08 Grid is accompanied by a Source Identifier (SID) Grid. This shows which cells in the GEBCO_08 Grid have been constrained by bathymetry data and which have been interpolated.

Figure 2 shows data from the SID Grid (shown as black dots/lines) overlaid on the GEBCO_08 Grid.

Please see the documentation that accompanies the data set for more information on the generation of the GEBCO_08 Grid.

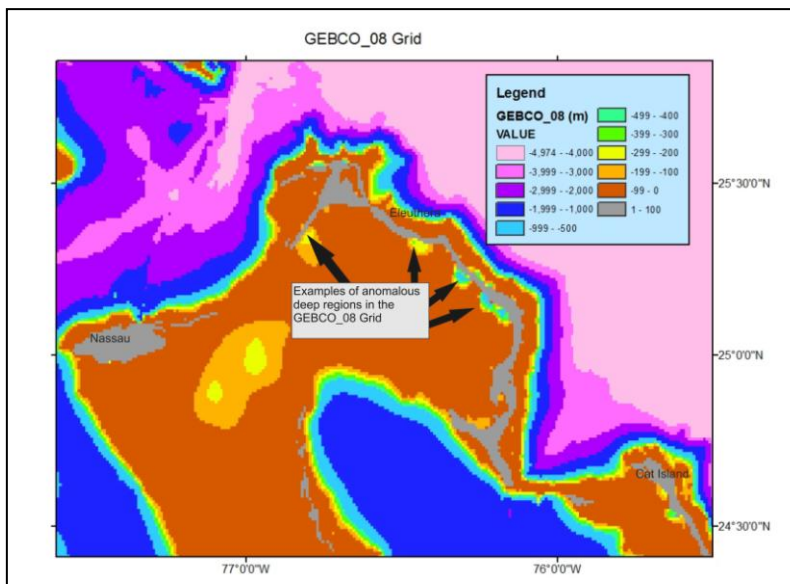


Figure 1

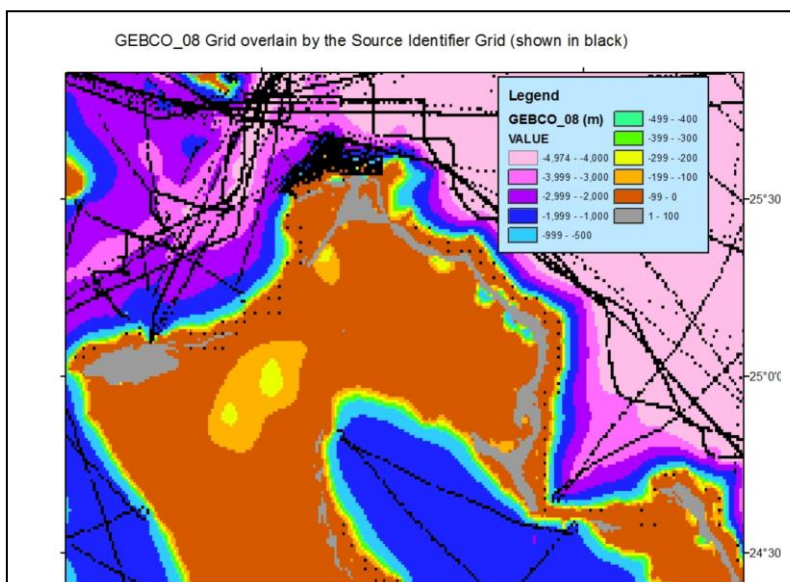


Figure 2