

Error reported in the GEBCO_2020 Grid in the southern Indian Ocean region (99°E, 55°S)

A line of erroneous positive 'land' features have been reported in the GEBCO_2020 Grid in the region 99°E, 55°S. This is shown in the images below.

Further details about the development of the GEBCO_2020 Grid can be found at: www.gebco.net/data_and_products/gridded_bathymetry_data/gebco_2020/

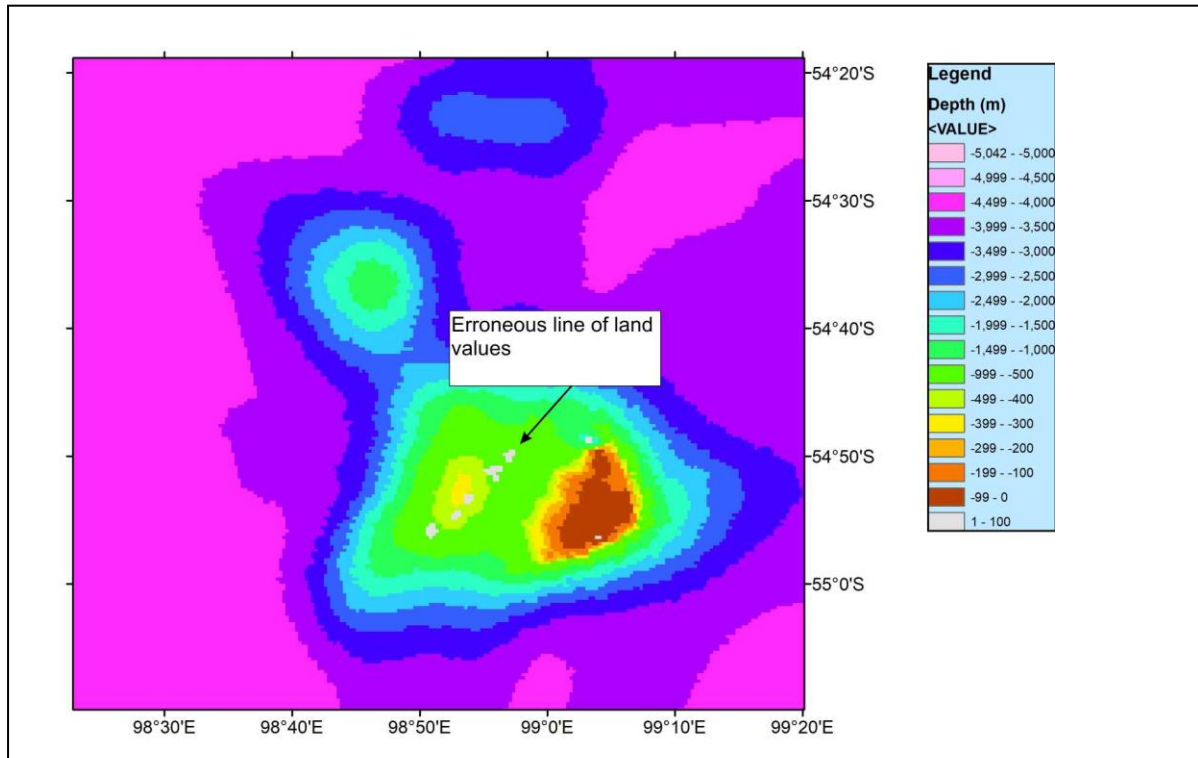


Figure 1. The GEBCO_2020 Grid for part of the southern Indian Ocean region, with the line of 'positive values' indicated.