

## Error reported in the GEBCO\_2020 Grid in the East China Sea region

Lines of discontinuity have been reported in the GEBCO\_2020 Grid in the East China Sea region at, 30°N, 124°E. This is due to the inclusion of a gridded data set, developed by a different method, being included on to the GEBCO base grid without any blending between the data sets.

Further details about the development of the GEBCO\_2020 Grid can be found at: [www.gebco.net/data\\_and\\_products/gridded\\_bathymetry\\_data/gebco\\_2020/](http://www.gebco.net/data_and_products/gridded_bathymetry_data/gebco_2020/)

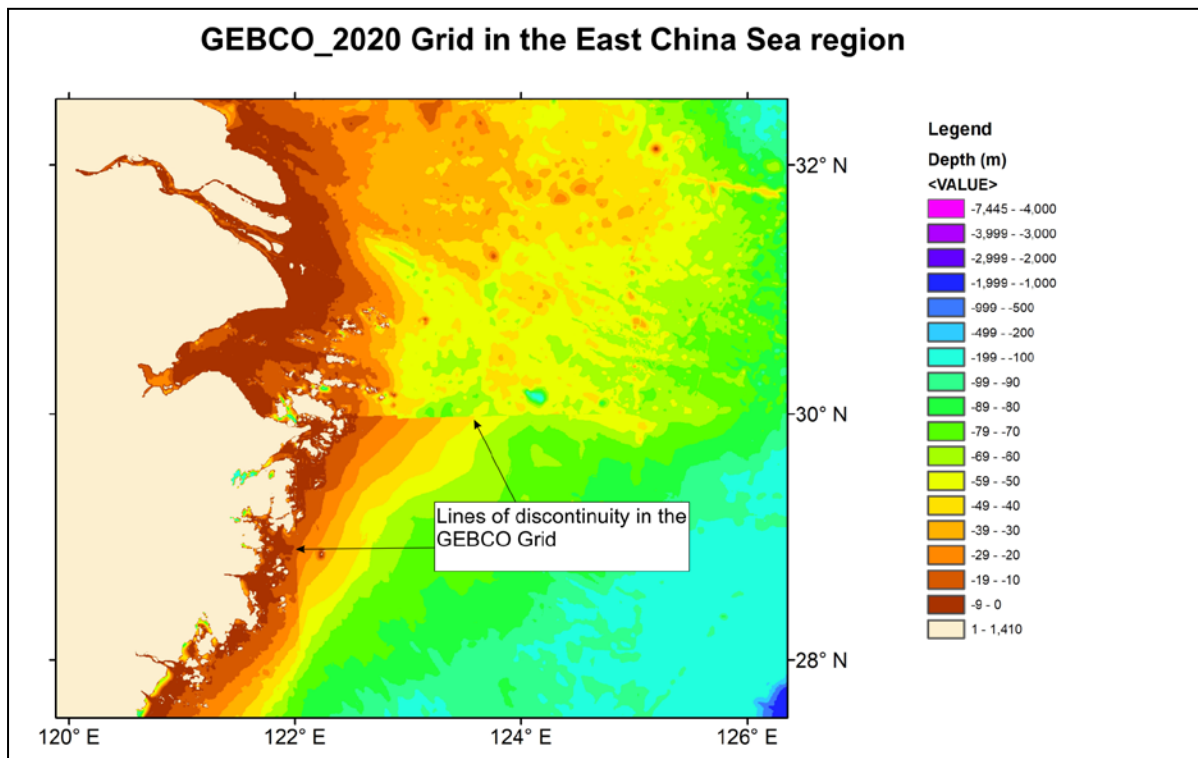


Figure 1. The GEBCO\_2020 Grid for part of the East China Sea region, with the lines of discontinuity indicated.