

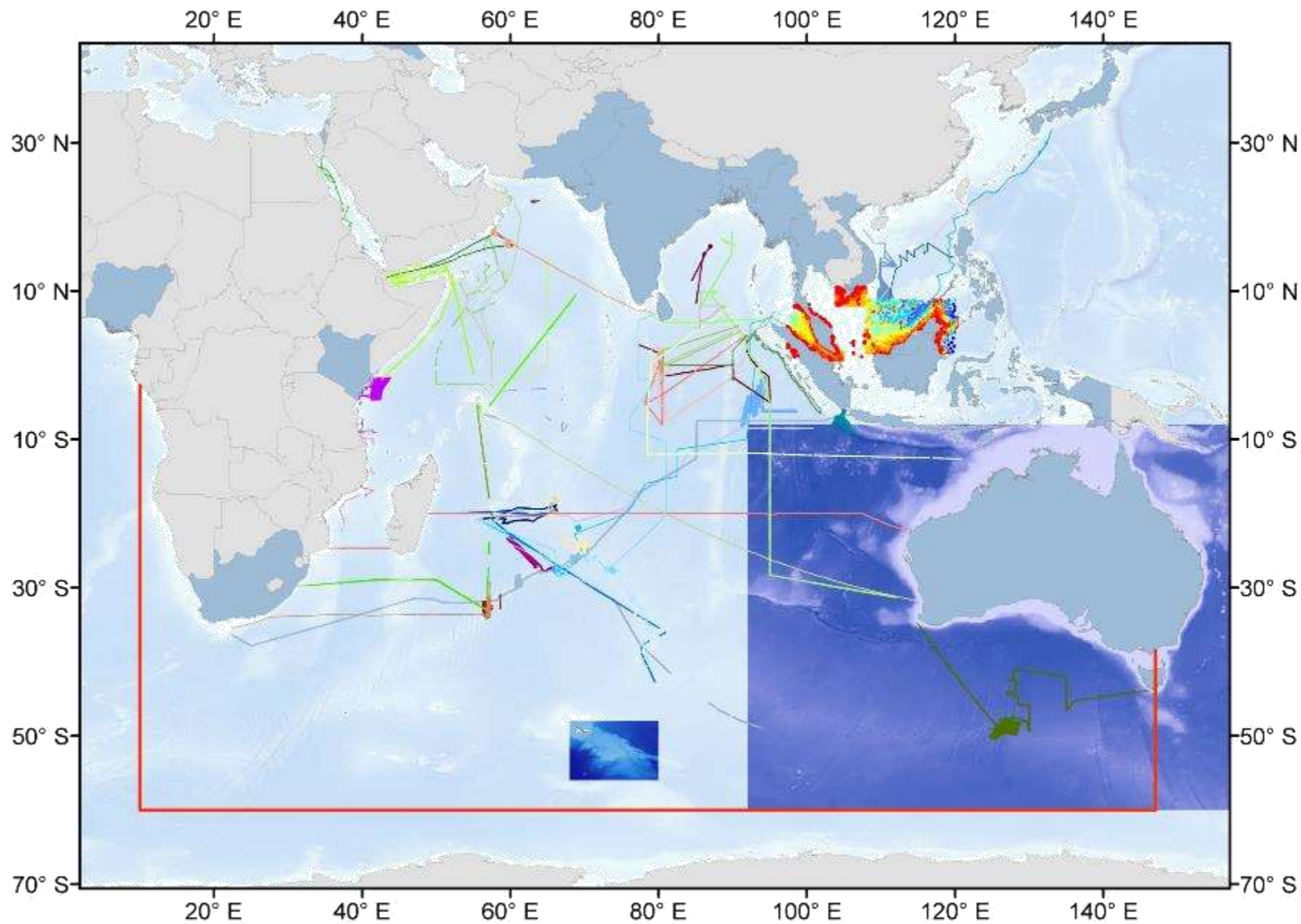


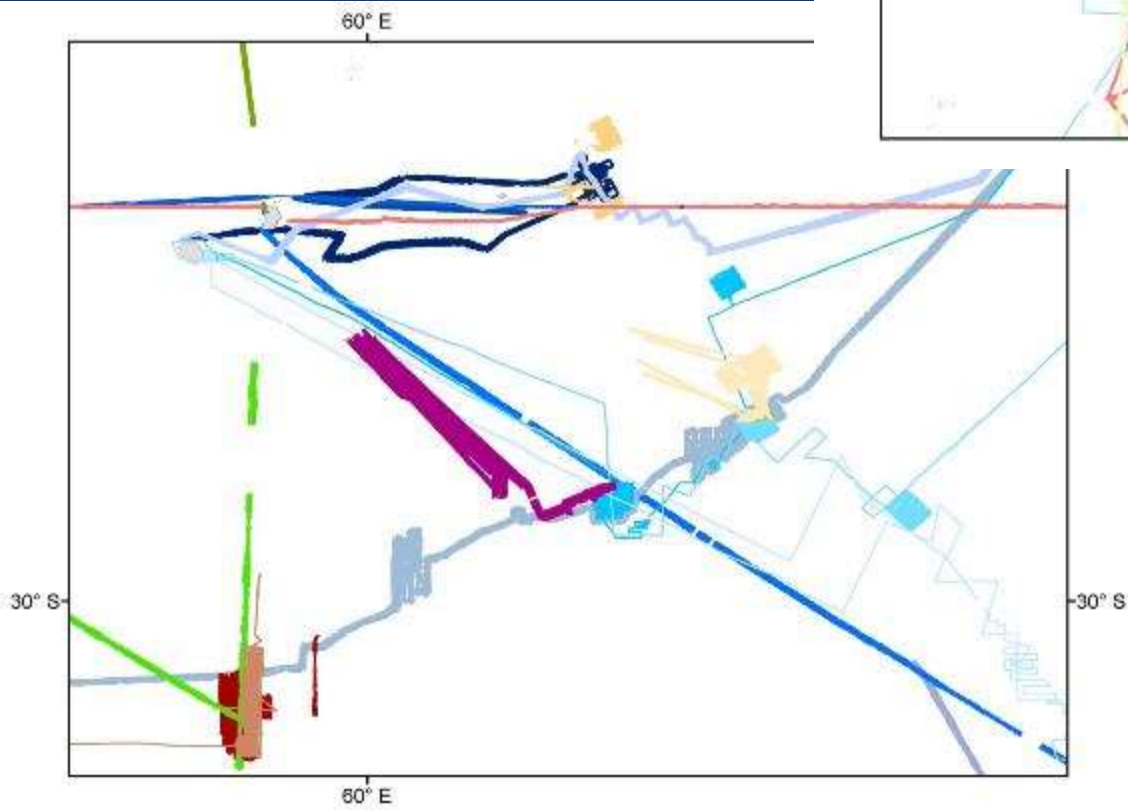
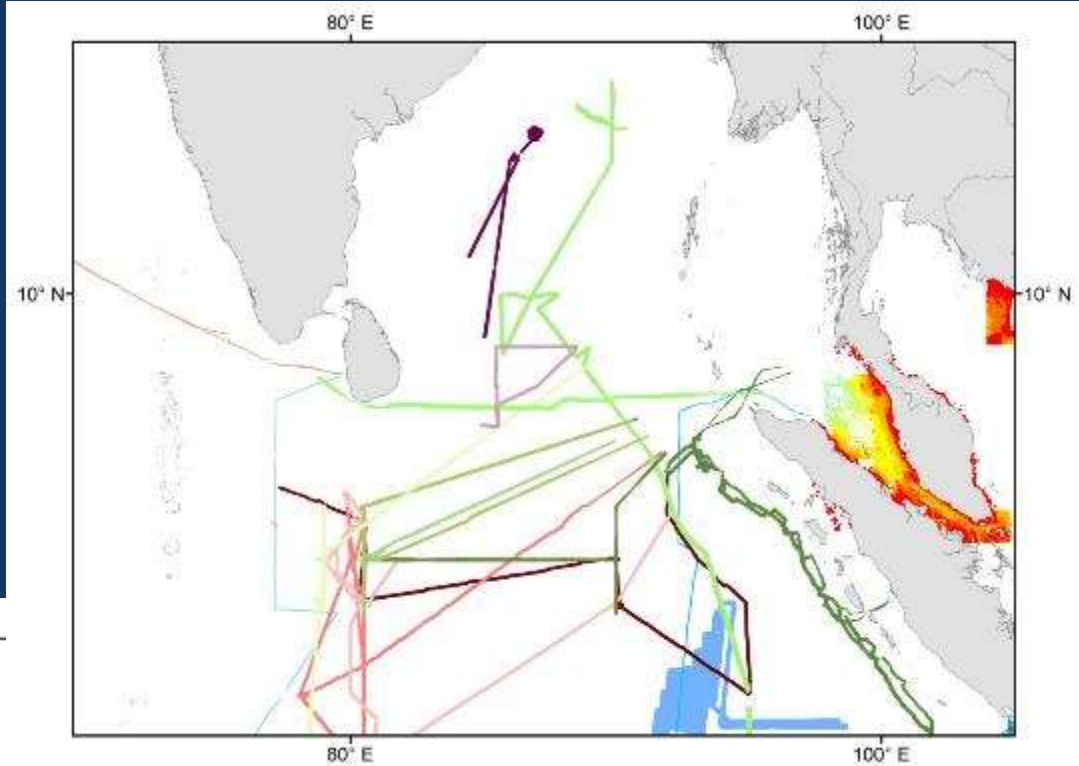
IOBC project

Rochelle Wigley

Nippon Foundation /GEBCO training Director of program

IOBC database





IOBC database

57 MBES surveys

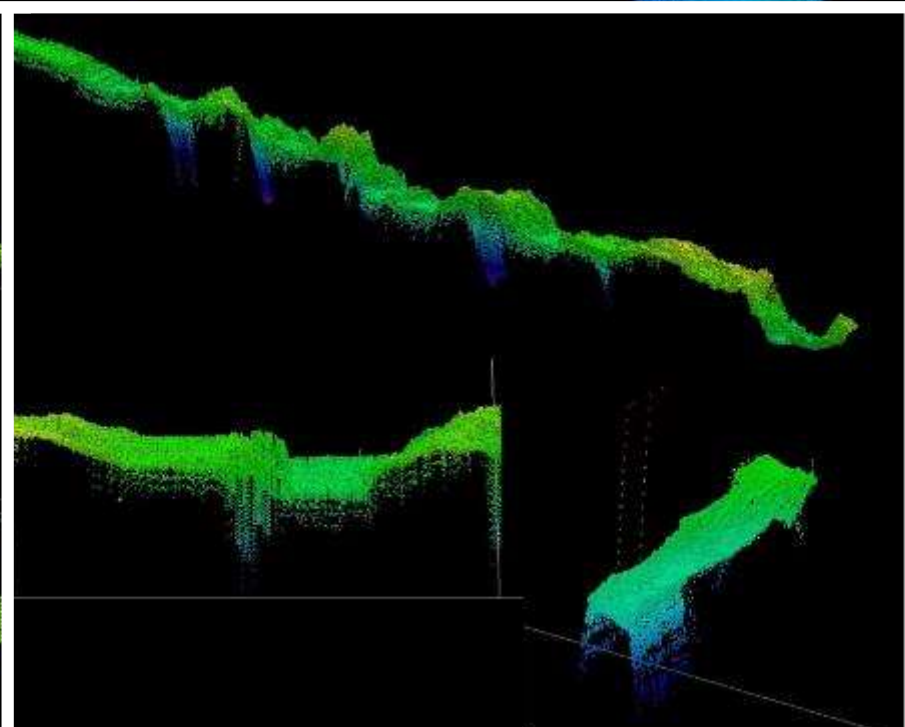
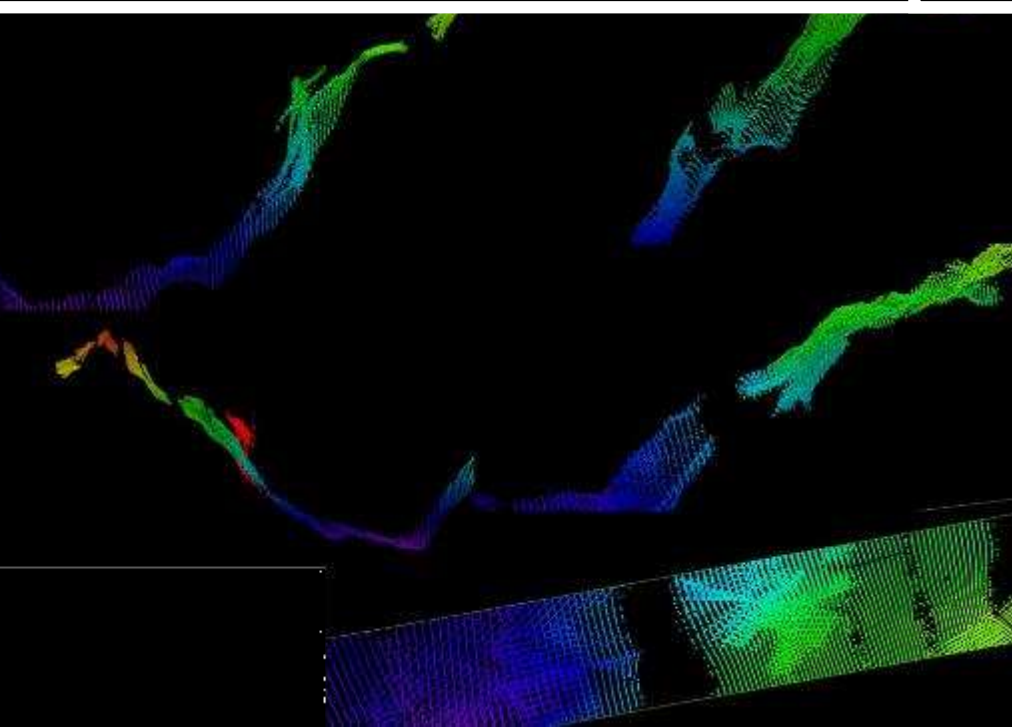
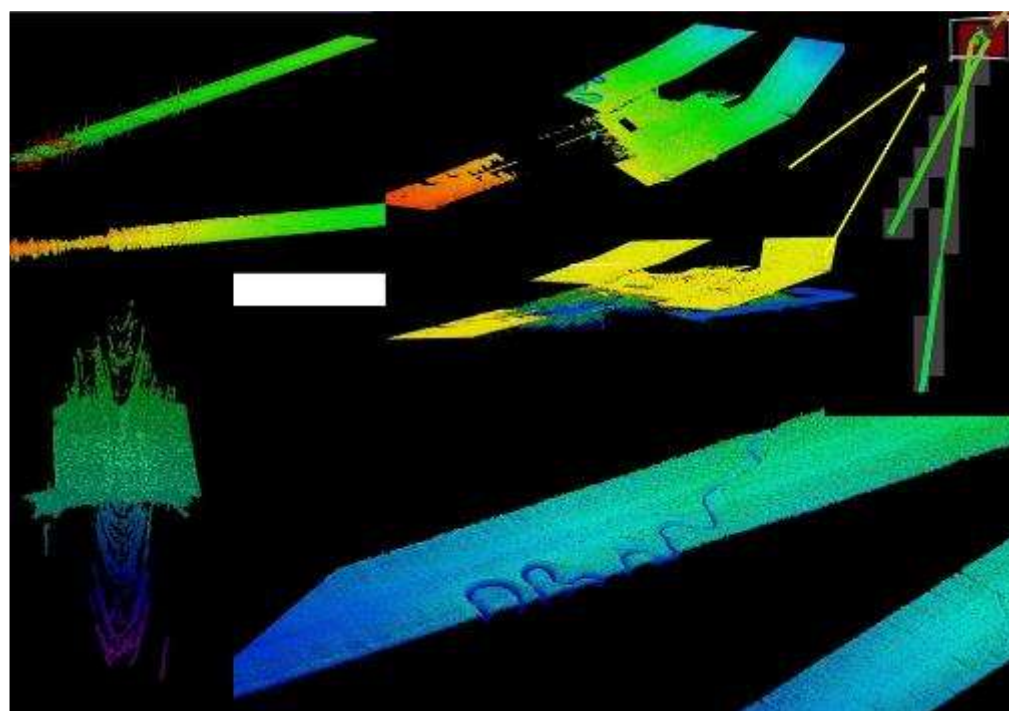
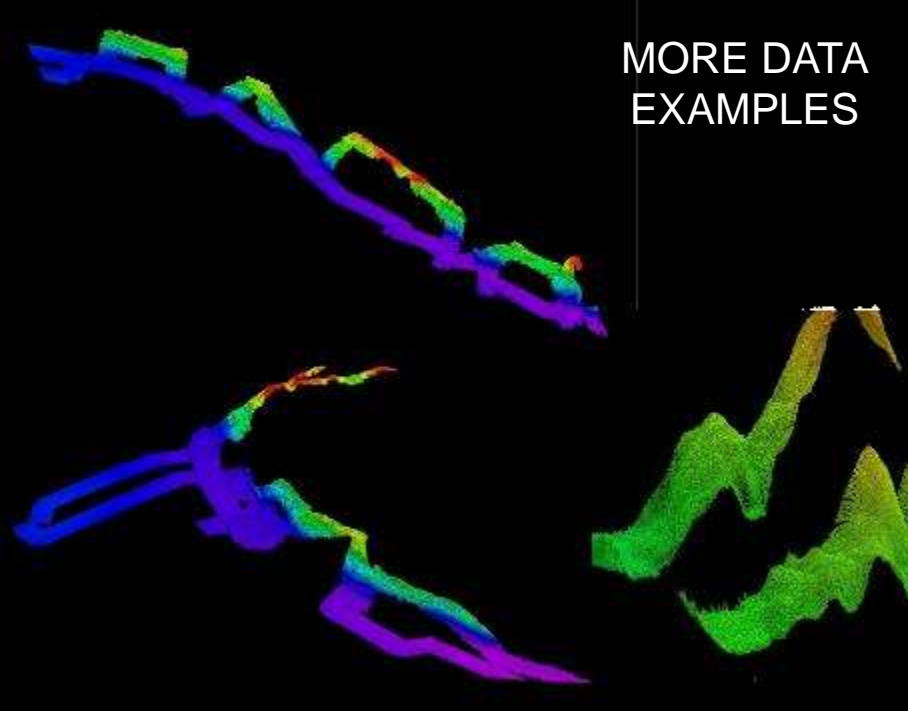
- National Geophysical Data Center (NGDC)
- Marine Geoscience Data System (MGDS)
- Ifremer
- Jamstec
- NIOZ
- NARA - Sri Lanka **
- KMFRI – Kenya **
- Geological Institute Russian Academy of Sciences **

ENC and Nautical Chart Data

- NHC, Malaysia **
- Digitised Nautical Charts – Vietnam **

**** GEBCO Students**

MORE DATA
EXAMPLES



Teaching Tool

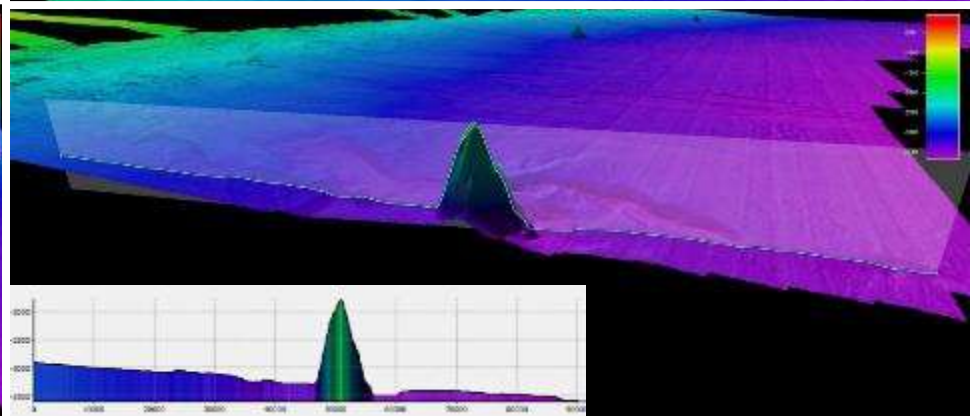
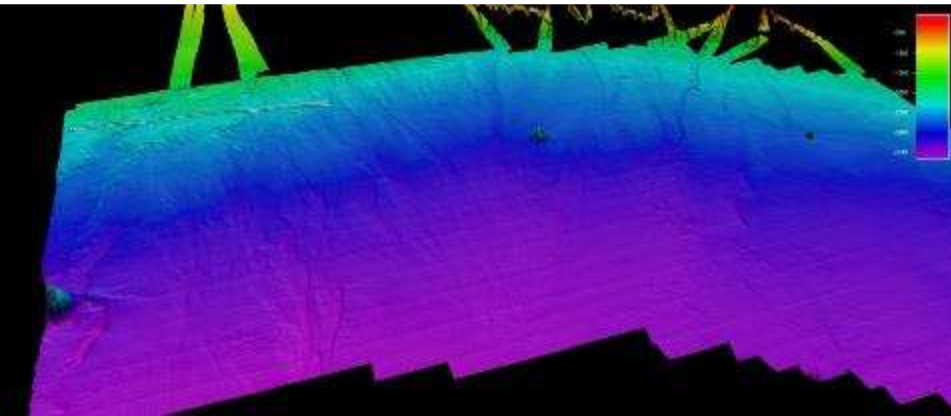
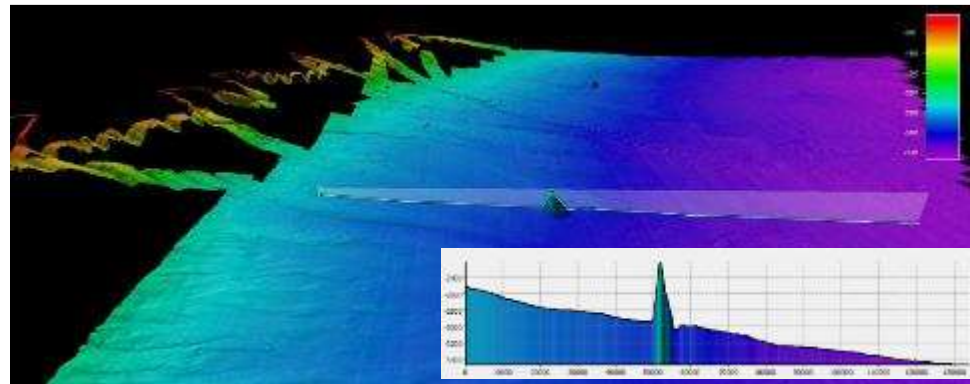
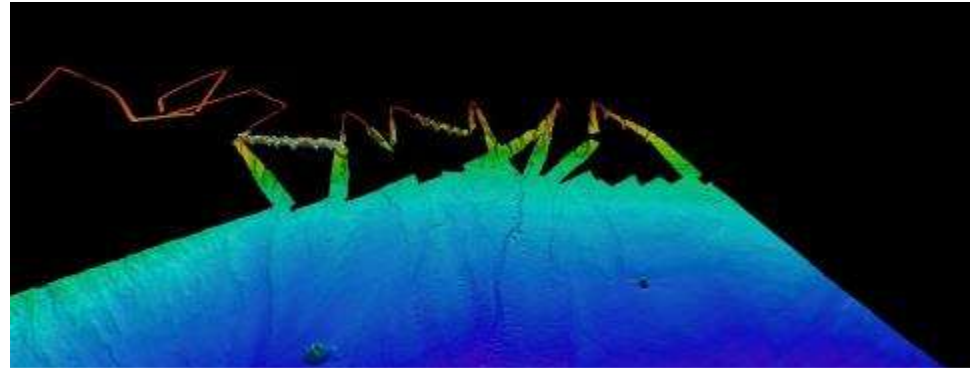
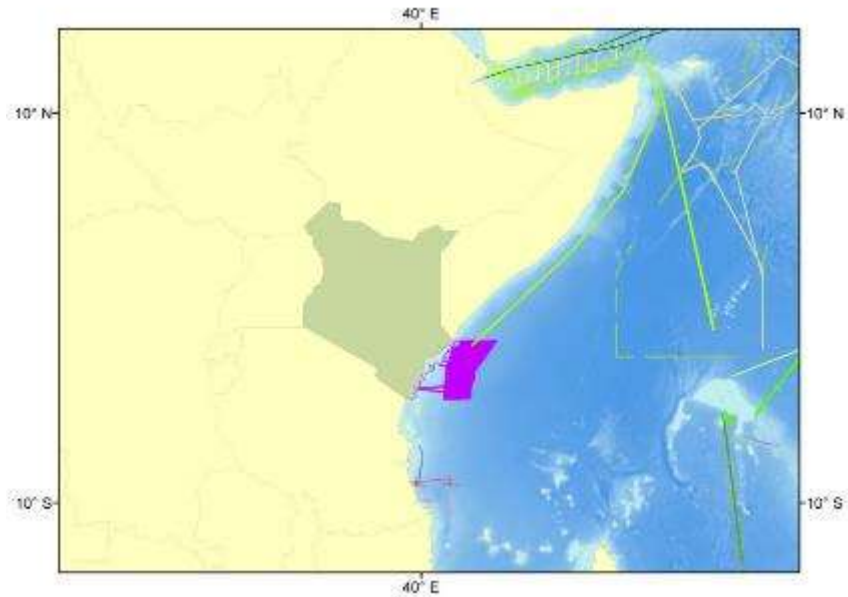
- Real data with real problems for students to work with
- Allow them to understand and work on work flow from data center/public-source to database input

WORKFLOW

- ID data source
- Use MBSystem tools and Virtual Machine to get into XYZ format
- Use Fledermaus tools to clean data using 3d-Editor and export as .asc shapfile
 - Undertand types of issues face with raw data and common MBES errors
- Use ArcGis Tools to build coverage for shapefile raster

Teaching Tool

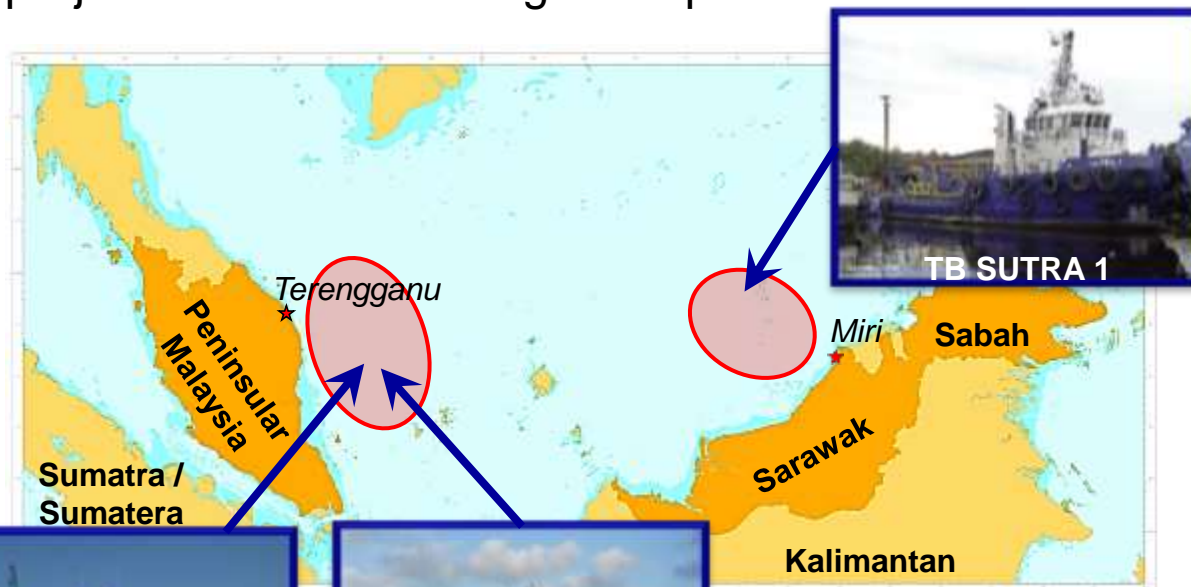
KMFRI provided with dataset that they could not read or display – with no metadata associated – and so no idea on information they had on shelf morphology



Crowd Sourced Bathymetry

Background:

- Expand the current IHO super yachting pilot project to include and test the CSB concept with a wider spectrum of mariners
- A GEBCO pilot project was discussed at Joint IHO-IOC Guiding Committee for GEBCO from 13 to 15 June 2014 at IHB
- At EIHC met with SEA ID, GEBCO and NHC and scope of pilot project discussed and agreed upon



TB SUTRA 1



MV AISHAH AIMS



MV AISHAH

Loggers were successfully installed on board MV Aishah AIMS 2, MV Aishah AIMS 3 in Kuala Terengganu on Peninsular Malaysia & TB SUTRA 1 in Miri, Sarawak. from 19th to 23rd January 2015.

Crowd Sourced Bathymetry

Loggers were successfully installed on board MV Aishah AIMS 2, MV Aishah AIMS 3 in Kuala Terengganu on Peninsular Malaysia & TB SUTRA 1 in Miri, Sarawak. from 19th to 23rd January 2015.

ISSUES TO DATE:

- **Vessels did not leave port as expected date due to both a fall-out from increased oil prices reducing survey time and then onset of bad weather**
- **No routine surveys for chartered vessel**
- **Change in data format recorded on logger**
- **Have to be in port to get new data (Difficult to get remote login access to troubleshoot)**

LESSONS LEARNT:

- **Some information on metadata and setup essential**
- **Need to simplify hardware for easier installation and data retrieval – not all vessels have technology of super-yachts**
- **Explore whether this technology can be adapted for fishing industry?**
- **Data must be made publically-available and exploring ways to do this through GEBCO and IHO-DCDB**

